

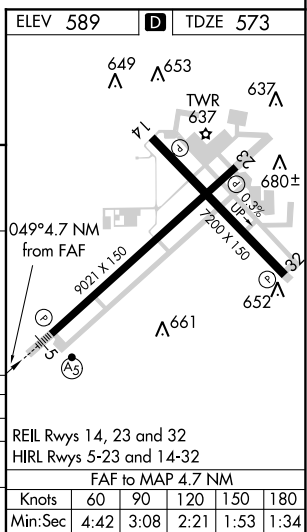
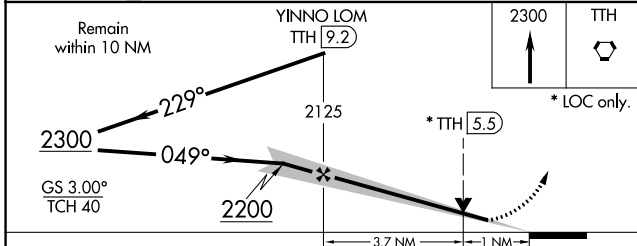
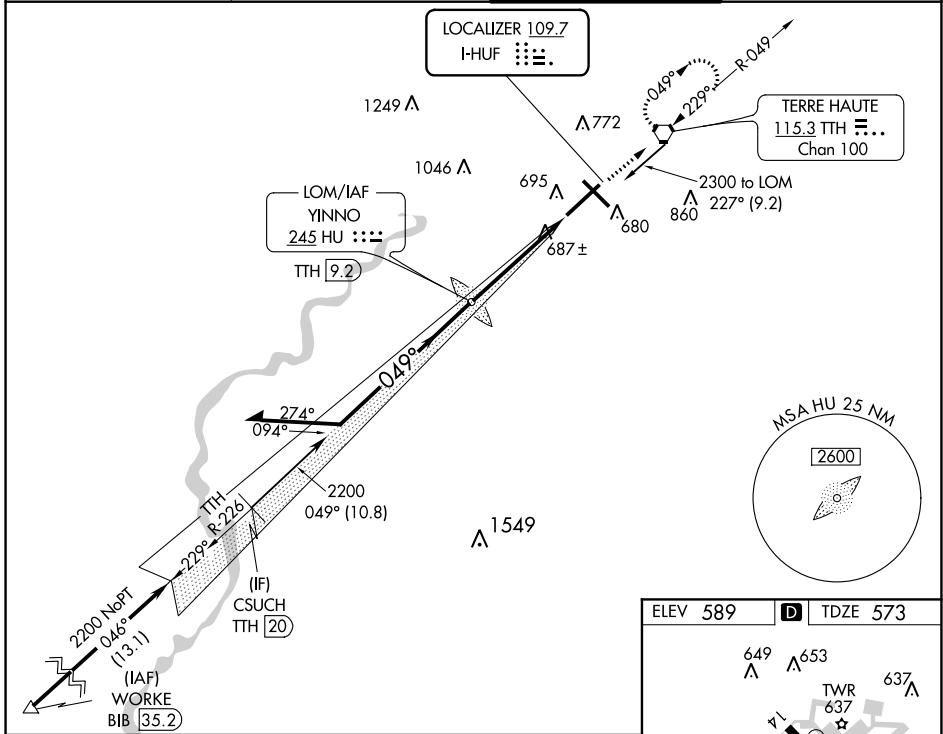
LOC I-HUF <b>109.7</b>	APP CRS <b>049°</b>	Rwy Idg TDZE Apt Elev	<b>9020</b> <b>573</b> <b>589</b>
---------------------------	------------------------	-----------------------------	---

# ILS or LOC RWY 5

TERRE HAUTE RGNL (HUF)

ADF or DME required.		MALS R 	MISSED APPROACH: Climb to 2300 direct TTH VORTAC and hold.
VDP NA when using Paris altimeter setting. When local altimeter setting not received, use Paris altimeter setting and increase all DA 61 feet and all MDA 80 feet, increase S-LOC 5 Cats C/D visibility to RVR 4500. For inop ALS, increase S-LOC 5 Cat C/D visibility to RVR 5500, when using Paris altimeter setting increase S-ILS 5 all Cats visibilities to RVR 4500 and S-LOC Rwy 5 all Cats visibility 1/2 SM. **RVR 1800 authorized with use of FD or AP or HUD to DA, NA when using Paris altimeter setting.			

ATIS <b>127.5 269.375</b>	HULMAN APP CON <b>125.45 339.8</b>	HULMAN TOWER <b>134.725 239.0</b>	GND CON <b>121.6 348.6</b>
------------------------------	---------------------------------------	--------------------------------------	-------------------------------



CATEGORY	A	B	C	D
S-ILS 5 **	773/24 200 (200-1/2)			
S-LOC 5	940/24	367 (400-1/2)	940/35	367 (400-5/8)
CIRCLING	1040-1 451 (500-1)	1040-1 451 (500-1)	1220-1 3/4 631 (700-1 3/4)	1220-2 631 (700-2)

REIL Rwys 14, 23 and 32					
HIRL Rwys 5-23 and 14-32					
FAF to MAP 4.7 NM					
Knots	60	90	120	150	180
Min:Sec	4:42	3:08	2:21	1:53	1:34

EC-2, 27 JAN 2022 to 24 FEB 2022

EC-2, 27 JAN 2022 to 24 FEB 2022