

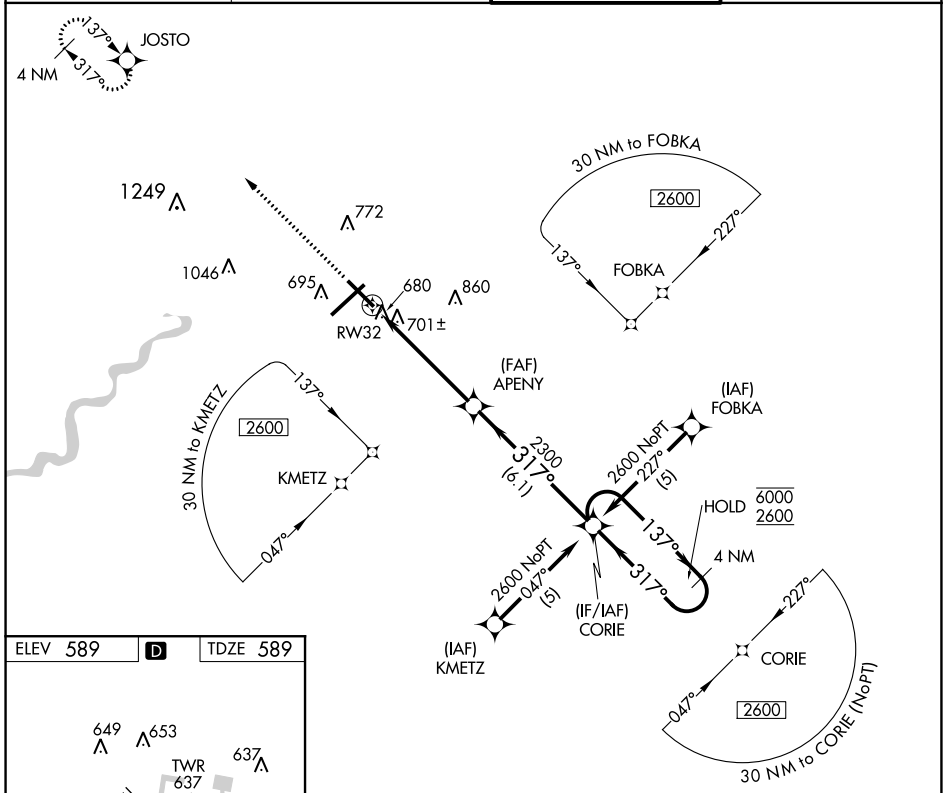
APP CRS	Rwy Idg	7200
317°	TDZE	589
	Apt Elev	589

RNAV (GPS) RWY 32

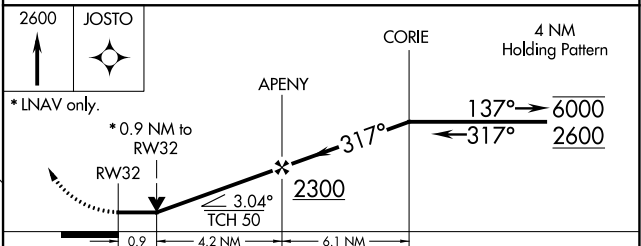
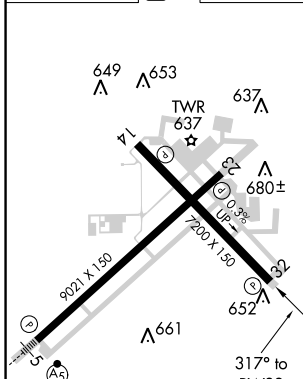
TERRE HAUTE RGNL (HUF)

RNP APCH.	<p>▼ VDP NA when using Paris altimeter setting. Rwy 32 helicopter visibility reduction below 3/4 SM NA.</p> <p>▲ When local altimeter setting not received, use Paris altimeter setting and increase all MDAs 80 feet, LNAV Cat C/D visibility to 1 3/8 SM and Circling Cat C/D 1/4 SM.</p>	MISSED APPROACH: Climb to 2600 direct JOSTO and hold.
-----------	---	--

ATIS 127.5 269.375	HULMAN APP CON 125.45 339.8	HULMAN TOWER 134.725 239.0	GND CON 121.6 348.6
------------------------------	---------------------------------------	--------------------------------------	-------------------------------



ELEV 589	D	TDZE 589
----------	----------	----------



CATEGORY	A	B	C	D
LNAV MDA	980-1	391 (400-1)	980-1 1/8 391 (400-1 1/8)	980-1 1/4 391 (400-1 1/4)
C CIRCLING	1040-1	451 (500-1)	1220-1 3/4 631 (700-1 3/4)	1220-2 631 (700-2)

REIL Rws 14, 23 and 32
HIRL Rws 5-23 and 14-32

EC-2, 27 JAN 2022 to 24 FEB 2022

EC-2, 27 JAN 2022 to 24 FEB 2022