

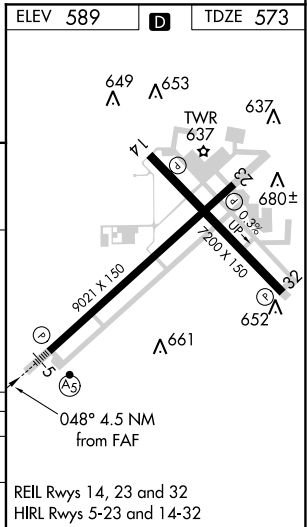
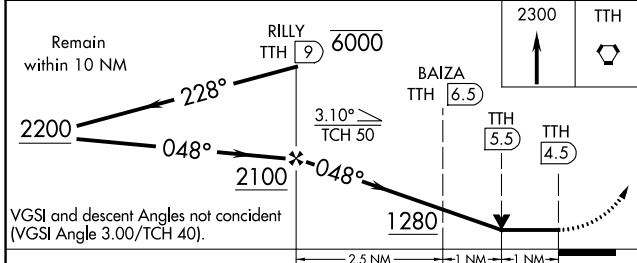
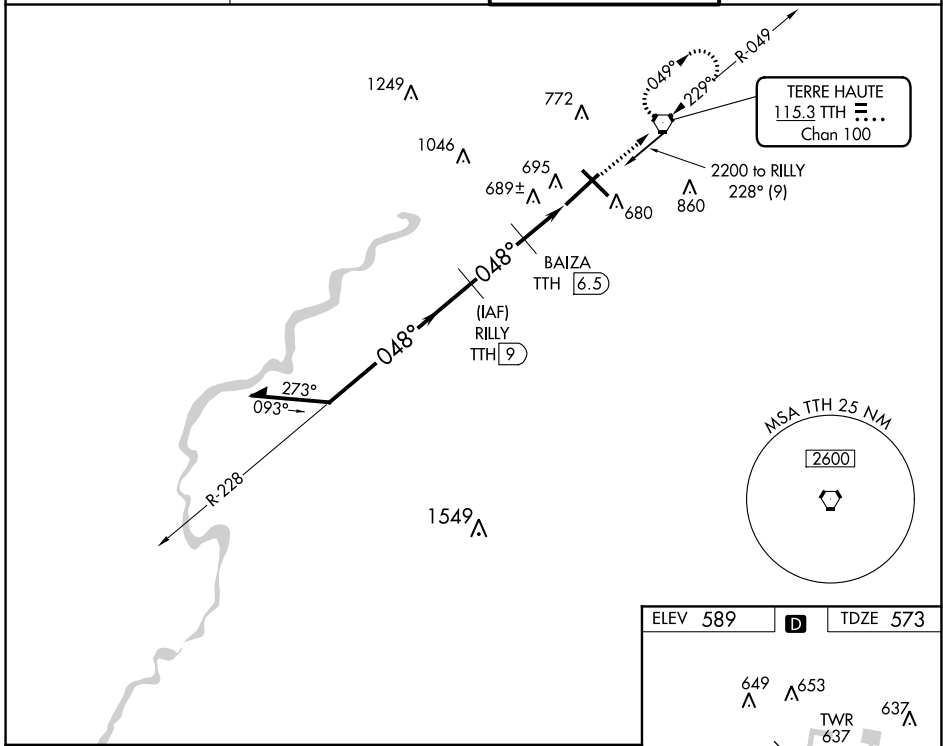
VORTAC TTH 115.3 Chan 100	APP CRS 048°	Rwy Idg TDZE Apt Elev	9020 573 589
---	------------------------	-----------------------------	---

VOR RWY 5

TERRE HAUTE RGNL (HUF)

DME required.			MISSED APPROACH: Climb to 2300 direct TTH VORTAC and hold.
	VDP NA when using Paris, IL altimeter setting. When local altimeter setting not received, use Paris altimeter setting and increase all MDA 80 feet and Circling Cat C/D visibility ¼ SM. For inop ALS, increase S-5 Cat C/D visibility to RVR 6000. Rwy 5 helicopter visibility reduction below ¾ SM NA.		

ATIS 127.5 269.375	HULMAN APP CON 125.45 339.8	HULMAN TOWER 134.725 239.0	GND CON 121.6 348.6
------------------------------	---------------------------------------	--------------------------------------	-------------------------------



ELEV 589	D	TDZE 573		
CATEGORY S-5	A	B	C	D
		960/50	387 (400-1)	
C CIRCLING	1040-1	451 (500-1)	1220-1¾ 631 (700-1¾)	1220-2 631 (700-2)

EC-2, 27 JAN 2022 to 24 FEB 2022

EC-2, 27 JAN 2022 to 24 FEB 2022