

LOC I- IAG 110.1	APP CRS 280°	Rwy ldg TDZE Apt Elev	9129 588 592
-----------------------------------	------------------------	-----------------------------	---

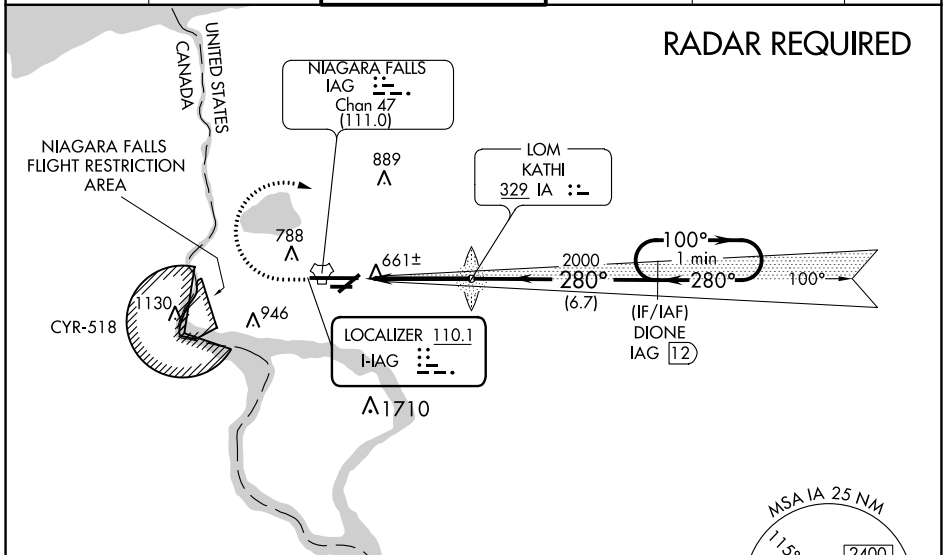
ILS Z or LOC Z RWY 28R

NIAGARA FALLS INTL (IAG)

⚠ When local altimeter setting not received, use Buffalo Niagara Intl altimeter setting and increase all DA 51 feet and all MDA 60 feet; increase Circling Cat C and D visibility ¼ SM. For inop MALSRL, increase S-ILS 28R all Cats visibility to RVR 4500 and S-LOC 28R all Cats visibility to RVR 5000. For inop MALSRL when using Buffalo Niagara Intl altimeter setting, increase S-ILS 28R all Cats visibility to RVR 4500, S-LOC 28R Cats A/B visibility to RVR 5000, and S-LOC 28R Cats C/D visibility to RVR 6000. DME required. Rwy 28R helicopter visibility reduction below ¾ SM NA. Rwy 6, 10R, 24, 28L, helicopter visibility reduction below 1 SM NA. Circling Rwy 6, 10R, 24, 28L NA at night.

MALSRL
 MISSED APPROACH: Climb to 1200 then climbing right turn to 3200 on heading 120° and I-AG E course to DIONE/IAG 12 DME and hold.

ATIS 120.8 269.4	BUFFALO APP CON 126.5 317.6	NIAGARA TOWER* 118.5 (CTAF) 0 349.0	GND CON 125.3 275.8	CLNC DEL 119.25 251.1	UNICOM 122.95
----------------------------	---------------------------------------	---	-------------------------------	---------------------------------	-------------------------



ELEV 592	D	TDZE 588
----------	----------	----------

280° 4.1 NM from FAF



1200	3200	I-AG E-crsc	DIONE IAG 12	DIONE IAG 12	One Minute Holding Pattern
↑		hdg 120°			
IA LOM 1763		IAG 1.3	2000	280°	100° → 2200
4.1 NM		6.7 NM			
CATEGORY	A	B	C	D	
S-ILS 28R	838/40 250 (300-¾)				
S-LOC 28R	920/40 332 (400-¾)				
C CIRCLING	1100-1	508 (600-1)	1280-2 688 (700-2)	1280-2¼ 688 (700-2¼)	

ILS Z or LOC Z RWY 28R

NE-2, 27 JAN 2022 to 24 FEB 2022

NE-2, 27 JAN 2022 to 24 FEB 2022