


LOM IA	APP CRS	Rwy ldg	<b>9129</b>
<b>329</b>	<b>280°</b>	TDZE	<b>588</b>
		Apt Elev	<b>592</b>

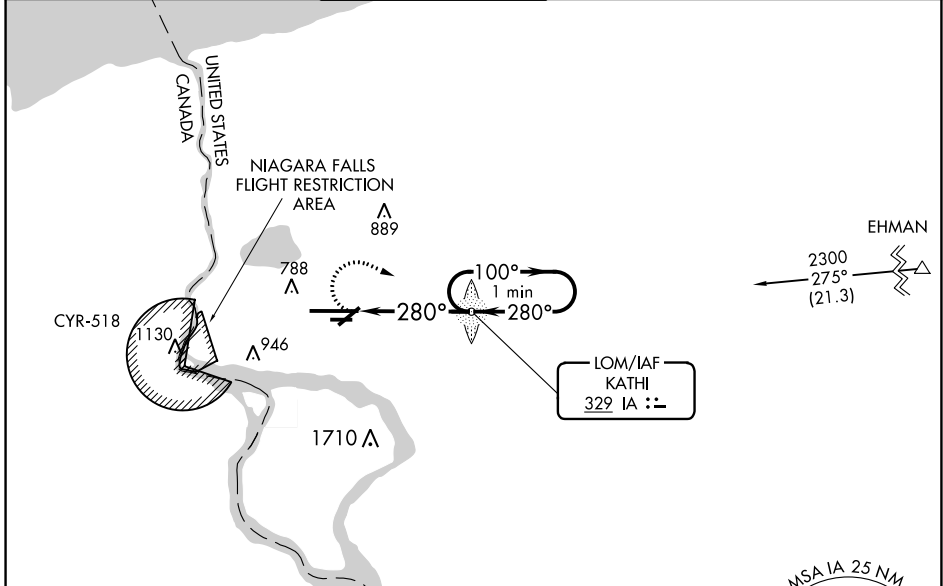
# NDB RWY 28R

NIAGARA FALLS INTL (IAG)

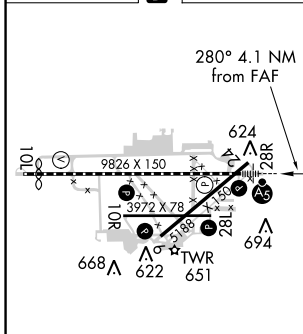
**⚠** When local altimeter setting not received, use Buffalo Niagara Intl altimeter setting and increase all MDA 60 feet, increase S-28R Cat C and D visibility  $\frac{1}{8}$  SM and Circling Cat C and D  $\frac{1}{4}$  SM. For inop MALSRR, increase S-28R Cats A/B visibility to RVR 5500 and Cats C/D visibility to  $1\frac{3}{4}$ . For inop MALSRR when using Buffalo Niagara Intl altimeter setting, increase S-28R Cats C/D visibility to  $1\frac{1}{8}$ . Rwy 28R helicopter visibility reduction below  $\frac{3}{4}$  SM NA. Rwy 6, 10R, 24, 28L helicopter visibility reduction below 1 SM NA. Circling Rwy 6, 10R, 24, 28L NA at night.

**MALSRR**  
  
**MISSED APPROACH:**  
 Climbing right turn to 3200 direct KATHI LOM and hold, continue climb-in-hold to 3200.

ATIS	BUFFALO APP CON	NIAGARA TOWER*	GND CON	CLNC DEL	UNICOM
<b>120.8 269.4</b>	<b>126.5 317.6</b>	<b>118.5 (CTAF) 0 349.0</b>	<b>125.3 275.8</b>	<b>119.25 251.1</b>	<b>122.95</b>



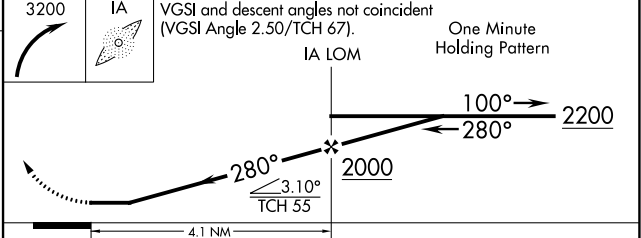
ELEV 592	<b>D</b>	TDZE 588
----------	----------	----------



TDZ/CL Rwy 28R **Ⓛ**  
 REIL Rws 6, 10R, 24, and 28L **Ⓛ**  
 HIRL Rwy 10L-28R **Ⓛ**  
 MIRL Rws 6-24 and 10R-28L **Ⓛ**

FAF to MAP 4.1 NM

Knots	60	90	120	150	180
Min:Sec	4:06	2:44	2:03	1:38	1:22



CATEGORY	A	B	C	D
S-28R	1200/40	612 (700- $\frac{3}{4}$ )	1200-1 $\frac{3}{8}$	612 (700-1 $\frac{3}{8}$ )
<b>C</b> CIRCLING	1200-1	608 (700-1)	1280-2 688 (700-2)	1280-2 $\frac{1}{4}$ 688 (700-2 $\frac{1}{4}$ )

NE-2, 27 JAN 2022 to 24 FEB 2022

NE-2, 27 JAN 2022 to 24 FEB 2022