

WAAS CH 66034 W10A	APP CRS 120°	Rwy Idg TDZE 589 Apt Elev 592	9126
--	------------------------	---	-------------

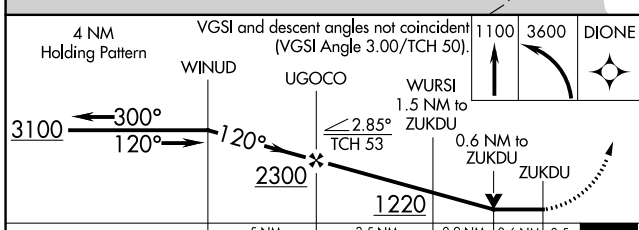
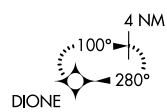
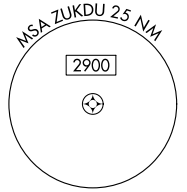
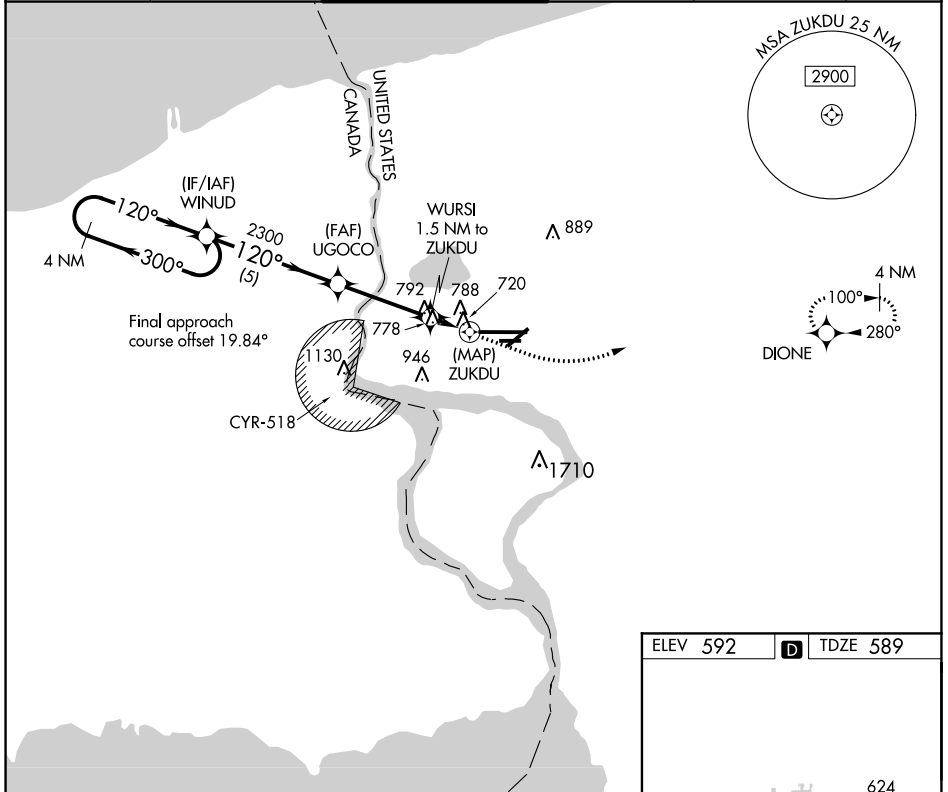
RNAV (GPS) RWY 10L

NIAGARA FALLS INTL (IAG)

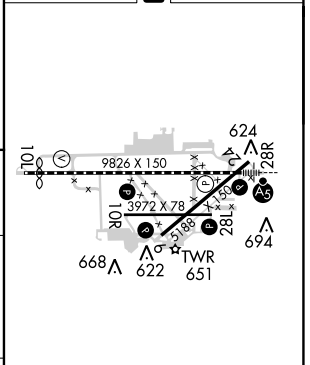
⚠ DME/DME RNP-0.3 NA. VDP NA with Buffalo Niagara Intl altimeter setting. When local altimeter setting not received, use Buffalo Niagara Intl altimeter setting and increase all MDA 60 feet.
⚠ Increase LP Cats C/D and Circling Cats C/D visibility ¼ mile. Rwy 10L helicopter visibility reduction below ¾ SM NA. Rwy 6, 10R, 24, 28L helicopter visibility reduction below 1 SM NA. Circling Rwy 6, 10R, 24, 28L NA at night.

MISSED APPROACH: Climb to 1100 then climbing left turn to 3600 direct DIONE and hold.

ATIS 120.8 269.4	BUFFALO APP CON 126.5 317.6	NIAGARA TOWER ★ 118.5 (CTAF) 0 349.0	GND CON 125.3 275.8	CLNC DEL 119.25 251.1	UNICOM 122.95
----------------------------	---------------------------------------	--	-------------------------------	---------------------------------	-------------------------



ELEV 592	D TDZE 589
----------	-------------------



CATEGORY	A	B	C	D
LP MDA	980-1 391 (400-1)		980-1½ 391 (400-1½)	
LNAV MDA	1040-1 451 (500-1)		1040-1¾ 451 (500-1¾)	
C CIRCLING	1100-1 508 (600-1)		1280-2 688 (700-2)	1280-2¼ 688 (700-2¼)

TDZ/CL Rwy 28R **1**
 REIL Rwys 6, 10R, 24, and 28L **1**
 HIRL Rwy 10L-28R **1**
 MIRL Rwys 6-24 and 10R-28L **1**

NE-2, 27 JAN 2022 to 24 FEB 2022

NE-2, 27 JAN 2022 to 24 FEB 2022