

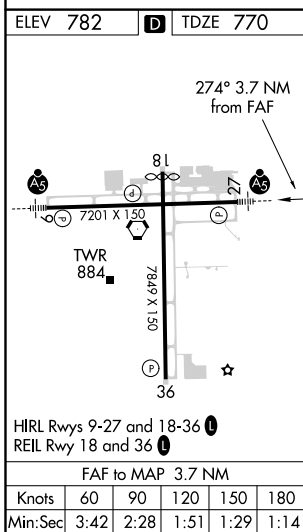
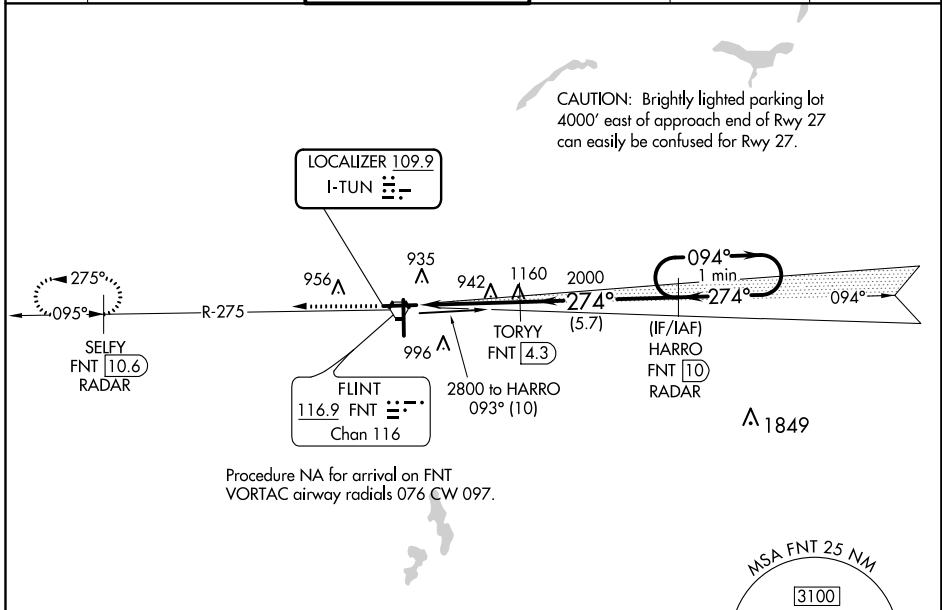
LOC I-TUN <b>109.9</b>	APP CRS <b>274°</b>	Rwy Idg TDZE Apt Elev	<b>7201</b> <b>770</b> <b>782</b>
---------------------------	------------------------	-----------------------------	---

# ILS or LOC RWY 27

BISHOP INTL (FNT)

DME or RADAR required for procedure entry. DME or RADAR required.		MALSR 	MISSED APPROACH: Climb to 2600 on FNT VORTAC R-275 direct SELFY/FNT VORTAC 10.6 DME/RADAR and hold.		
<p><b>▽</b> DME from FNT VORTAC. Simultaneous reception of I-TUN and FNT DME required. For inop ALS, increase S-LOC 27 Cat A/B visibility to 1 SM, and Cat C/D visibility to 1 3/8 SM.</p> <p><b>▲</b></p>					

ATIS <b>133.15</b>	GREAT LAKES APP CON ★ <b>118.8 257.9</b>	FLINT TOWER ★ <b>126.3 (CTAF) 257.9</b>	GND CON <b>121.9</b>	CLNC DEL <b>121.75</b>	UNICOM <b>122.95</b>
-----------------------	---	--	-------------------------	---------------------------	-------------------------



2600	FNT R-275	SELY FNT 10.6 RADAR	TORY FNT 4.3	HARRO FNT 10 RADAR	One Minute Holding Pattern
*LOC only.					
	FNT 0.6	*FNT 2	2000	2000	2800
	1.4 NM	2.3 NM	5.7 NM		GS 3.00° TCH 56
CATEGORY	A	B	C	D	
S-ILS 27	970-1/2 200 (200-1/2)				
S-LOC 27	1260-1/2	490 (500-1/2)	1260-1	490 (500-1)	
<b>C</b> CIRCLING	1260-1 478 (500-1)	1300-1 518 (600-1)	1300-1 1/2 518 (600-1 1/2)	1520-2 1/4 738 (800-2 1/4)	

EC-1, 27 JAN 2022 to 24 FEB 2022

EC-1, 27 JAN 2022 to 24 FEB 2022