

LOC I-FNT 109.9	APP CRS 094°	Rwy Idg TDZE Apt Elev	7201 771 782
---------------------------	------------------------	-----------------------------	---

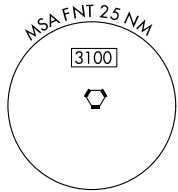
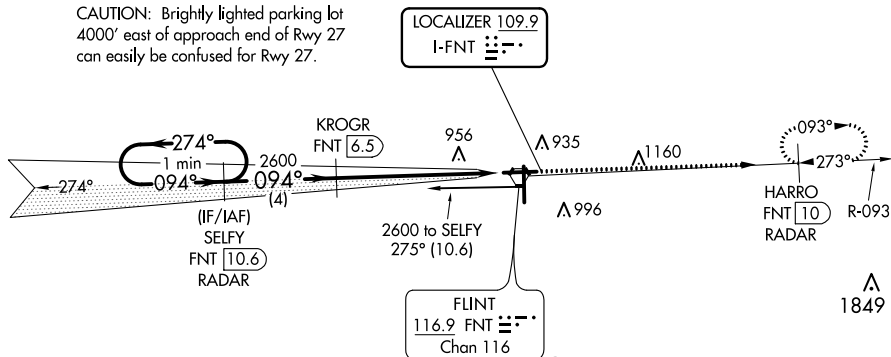
ILS or LOC RWY 9

BISHOP INTL (F'NT)

DME or RADAR required for procedure entry. DME or RADAR required.		MALSRS A5	MISSED APPROACH: Climb to 3000 on FNT VORTAC R-093 to HARRO/FNT VORTAC 10 DME/RADAR and hold.
▼	DME from FNT VORTAC. Simultaneous reception of I-FNT and FNT DME required. For inop ALS, increase S-LOC 9 Cat C/D visibility to 1 1/2 SM.		
▲	**RVR 1800 authorized with use of FD or AP or HUD to DA.		

ATIS 133.15	GREAT LAKES APP CON * 118.8 257.9	FLINT TOWER * 126.3 (CTAF) 0257.9	GND CON 121.9	CLNC DEL 121.75	UNICOM 122.95
-----------------------	---	---	-------------------------	---------------------------	-------------------------

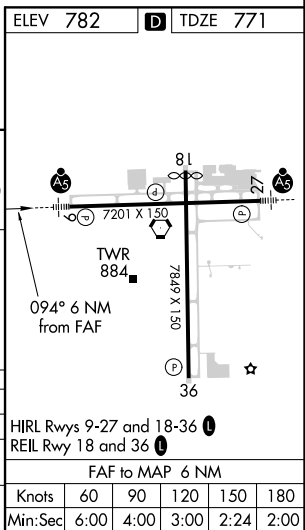
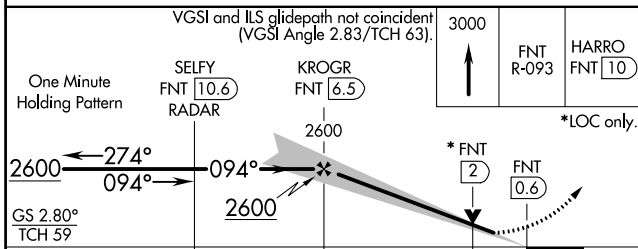
CAUTION: Brightly lighted parking lot 4000' east of approach end of Rwy 27 can easily be confused for Rwy 27.



Procedure NA for arrival on FNT VORTAC airway radials 234 CW 286.

EC-1, 27 JAN 2022 to 24 FEB 2022

EC-1, 27 JAN 2022 to 24 FEB 2022



One Minute Holding Pattern	SELFY FNT 10.6 RADAR	KROGR FNT 6.5	3000	FNT R-093	HARRO FNT 10
GS 2.80° TCH 59	2600	2600	2600	*FNT 2	FNT 0.6
	4 NM	4.6 NM	1.4 NM		
CATEGORY	A	B	C	D	
S-ILS 9 **	971/24		200 (200-1/2)		
S-LOC 9	1280/24	509 (500-1/2)	1280/55	509 (500-1)	
CIRCLING	1280-1 498 (500-1)	1300-1 518 (600-1)	1300-1 1/2 518 (600-1 1/2)	1520-2 1/4 738 (800-2 1/4)	

HIRL Rwys 9-27 and 18-36	REIL Rwy 18 and 36
FAF to MAP 6 NM	
Knots	60 90 120 150 180
Min:Sec	6:00 4:00 3:00 2:24 2:00