

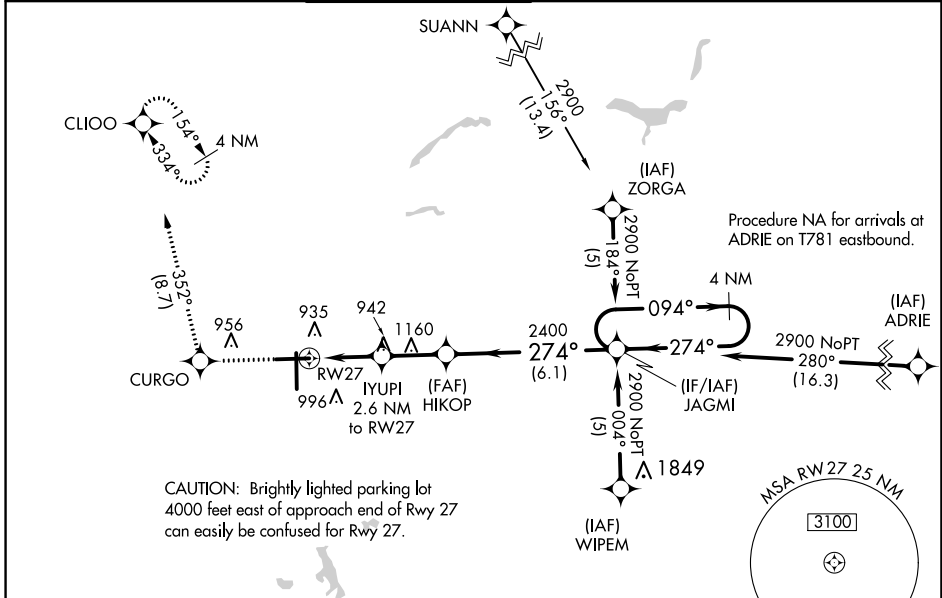
WAAS CH 72810 W27A	APP CRS 274°	Rwy Idg TDZE Apt Elev	7201 770 782
--	------------------------	-----------------------------	---

RNAV (GPS) RWY 27

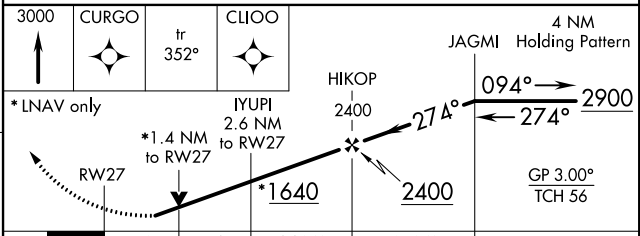
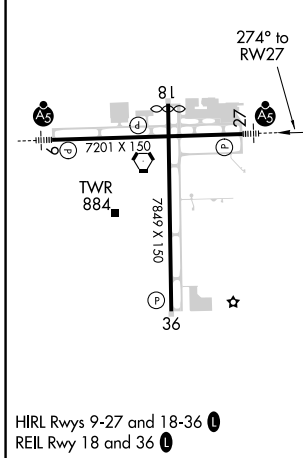
BISHOP INTL (FNT)

<p>T For uncompensated Baro-VNAV systems, LNAV/VNAV NA below -16°C (4°F) or above 54°C (130°F). Rwy 27 helicopter visibility reduction below 3/4 SM NA. DME/DME RNP-0.3 NA. For inop ALS, increase LNAV/VNAV all Cats visibility to 1 3/8 SM, LNAV Cat A/B visibility to 1 SM and LNAV Cat C/D visibility to 1 3/8 SM.</p>	<p>MALSRL</p>	<p>MISSED APPROACH: Climb to 3000 direct CURGO and track 352° to CLIOO and hold.</p>
	<p>Procedure NA for arrivals at ADRIE on T781 eastbound.</p>	

ATIS 133.15	GREAT LAKES APP CON ★ 118.8 257.9	FLINT TOWER ★ 126.3 (CTAF) 257.9	GND CON 121.9	CLNC DEL 121.75	UNICOM 122.95
-----------------------	---	--	-------------------------	---------------------------	-------------------------



ELEV 782	D	TDZE 770
----------	----------	----------



CATEGORY	A	B	C	D
LPV DA	1098-3/4		328 (400-3/4)	
LNAV/VNAV DA	1240-1		470 (500-1)	
LNAV MDA	1260-3/4 490 (500-3/4)		1260-1 490 (500-1)	
C CIRCLING	1260-1 478 (500-1)	1300-1 518 (600-1)	1300-1 1/2 518 (600-1 1/2)	1520-2 1/4 738 (800-2 1/4)

EC-1, 27 JAN 2022 to 24 FEB 2022

EC-1, 27 JAN 2022 to 24 FEB 2022