

WAAS CH 65914 W36A	APP CRS 005°	Rwy Idg TDZE Apt Elev	7648 782 782
--	------------------------	-----------------------------	---

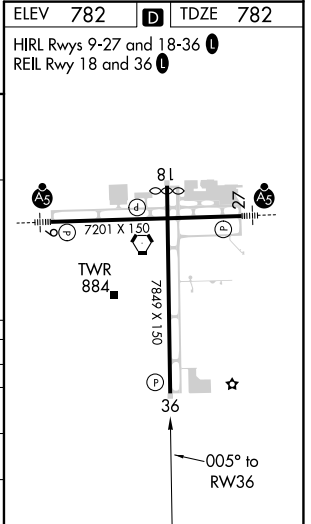
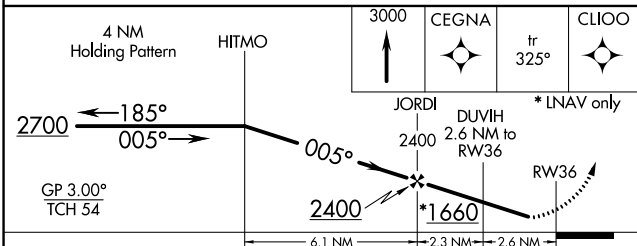
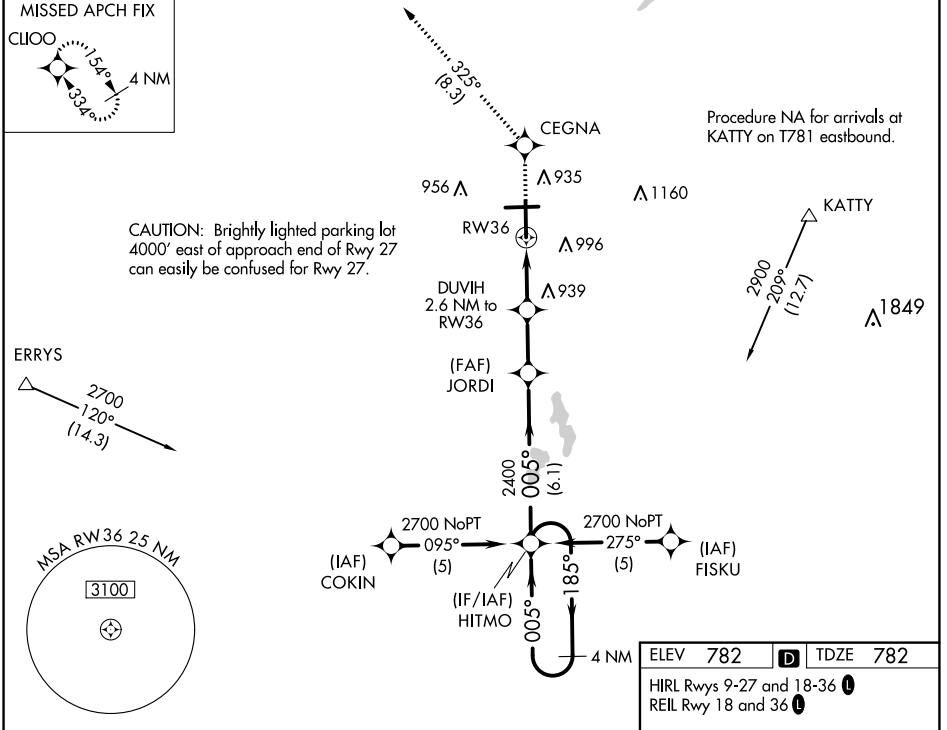
RNAV (GPS) RWY 36

BISHOP INTL (F'NT)

⚠ For uncompensated Baro-VNAV systems, LNAV/VNAV NA below -16°C (4°F) or above 54°C (130°F). Rwy 36 helicopter visibility reduction below 3/4 SM NA. DME/DME RNP -0.3 NA.

MISSED APPROACH: Climb to 3000 direct CEGNA and on track 325° to CLOO and hold.

ATIS 133.15	GREAT LAKES APP CON * 118.8 257.9	FLINT TOWER * 126.3 (CTAF) 0 257.9	GND CON 121.9	CLNC DEL 121.75	UNICOM 122.95
-----------------------	---	--	-------------------------	---------------------------	-------------------------



CATEGORY	A	B	C	D
LPV DA	1123-1¼	341 (400-1¼)		
LNAV/VNAV DA	1254-1¾	472 (500-1¾)		
LNAV MDA	1260-1 478 (500-1)	1260-1¾ 478 (500-1¾)	1260-1½ 478 (500-1½)	1260-1½ 478 (500-1½)
C CIRCLING	1260-1 478 (500-1)	1300-1 518 (600-1)	1300-1½ 518 (600-1½)	1520-2¼ 738 (800-2¼)

EC-1, 27 JAN 2022 to 24 FEB 2022

EC-1, 27 JAN 2022 to 24 FEB 2022