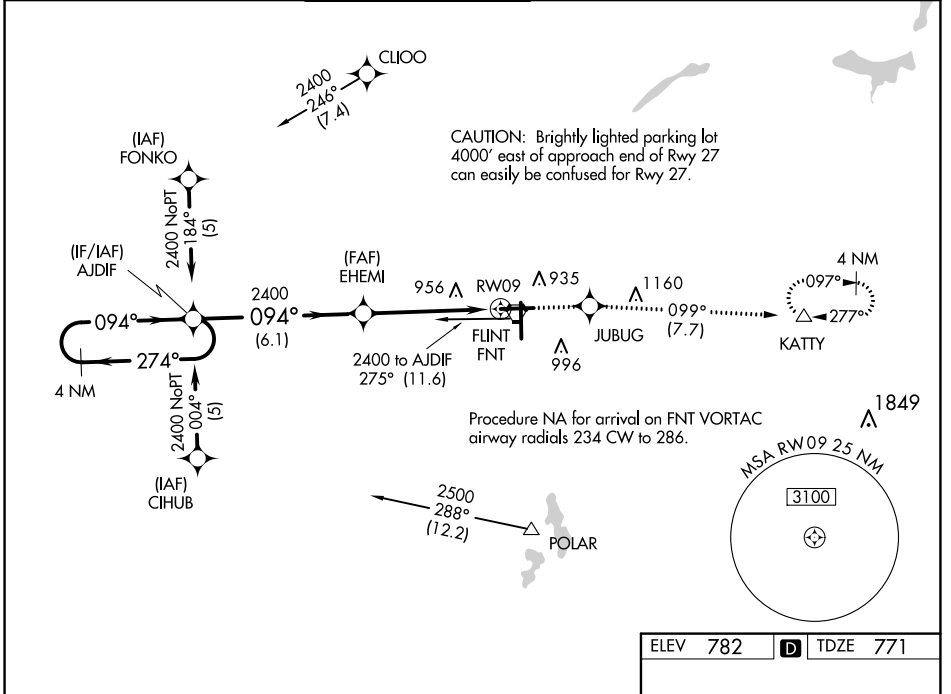


WAAS CH 45714 W09A	APP CRS 094°	Rwy Idg 7201 TDZE 771 Apt Elev 782
--------------------------	-----------------	---

RNAV (GPS) RWY 9

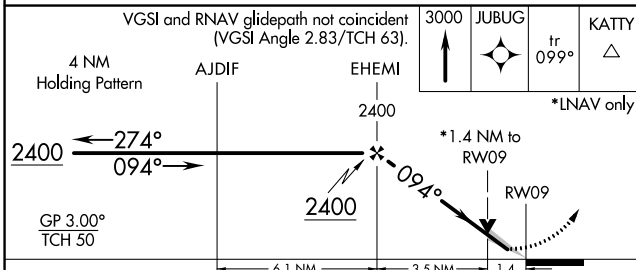
BISHOP INTL (F'NT)

<p>For uncompensated Baro-VNAV systems, LNAV/VNAV NA below -16°C (4°F) or above 54°C (130°F). DME/DME RNP-0.3 NA. For inop ALS, increase LNAV Cat C/D visibility to 1/8 SM. **RVR 1800 authorized with use of FD or AP or HUD to DA.</p>	<p>MALS</p>	MISSED APPROACH: Climb to 3000 direct JUBUG and on track 099° to KATTY and hold.			
		ATIS 133.15	GREAT LAKES APP CON * 118.8 257.9	FLINT TOWER * 126.3 (CTAF) 257.9	GND CON 121.9



EC-1, 27 JAN 2022 to 24 FEB 2022

EC-1, 27 JAN 2022 to 24 FEB 2022



CATEGORY	A	B	C	D
LPV DA **		971/24	200 (200-1/2)	
LNAV/VNAV DA		1227/50	456 (500-1)	
LNAV MDA	1260/24	489 (500-1/2)	1260/50	489 (500-1)
CIRCLING	1260-1	1300-1	1300-1 1/2	1520-2 1/4
	478 (500-1)	518 (600-1)	518 (600-1 1/2)	738 (800-2 1/4)

