

VORTAC FNT 116.9 Chan 116	APP CRS 196°	Rwy Idg TDZE 777 Apt Elev 782	7648
---	------------------------	---	-------------

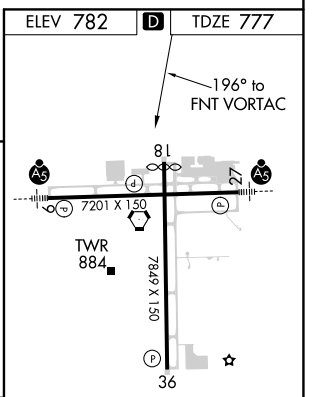
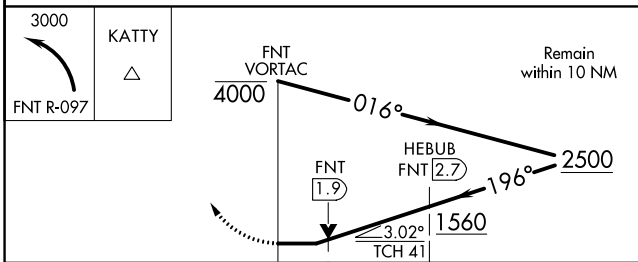
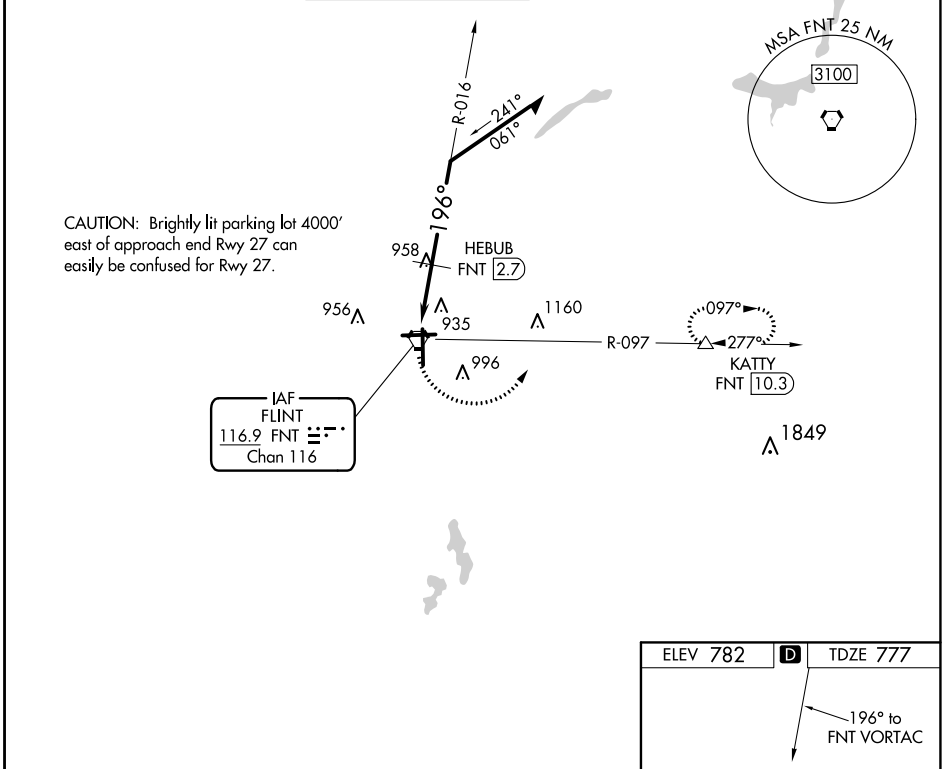
VOR RWY 18

BISHOP INTL (FNT)

⚠ Rwy 18 helicopter visibility reduction below 3/4 SM NA.
⚠ DME required.

MISSED APPROACH: Climbing left turn to 3000 on FNT VORTAC R-097 to KATY/10.3 DME and hold.

ATIS 133.15	GREAT LAKES APP CON * 118.8 257.9	FLINT TOWER * 126.3 (CTAF) 0 257.9	GND CON 121.9	CLNC DEL 121.75	UNICOM 122.95
-----------------------	---	--	-------------------------	---------------------------	-------------------------



CATEGORY	A	B	C	D
S-18	1300-1	523 (600-1)	1300-1 1/2 523 (600-1 1/2)	1300-1 3/4 523 (600-1 3/4)
C CIRCLING	1300-1	518 (600-1)	1300-1 1/2 518 (600-1 1/2)	1520-2 1/4 738 (800-2 1/4)

HIRL Rwys 9-27 and 18-36 **Ⓛ**
 REIL Rwy 18 and 36 **Ⓛ**

EC-1, 27 JAN 2022 to 24 FEB 2022

EC-1, 27 JAN 2022 to 24 FEB 2022