

VORTAC FNT 116.9 Chan 116	APP CRS 359°	Rwy Idg TDZE 782 Apt Elev 782
---	------------------------	---

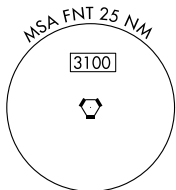
VOR RWY 36

BISHOP INTL (F'NT)

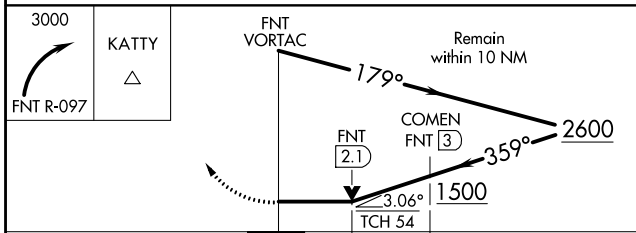
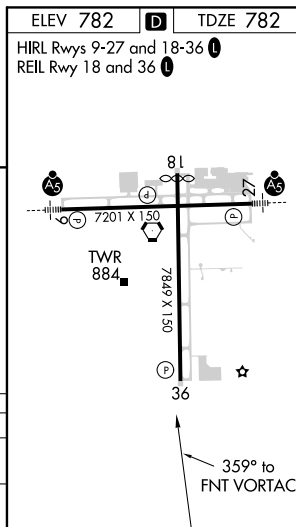
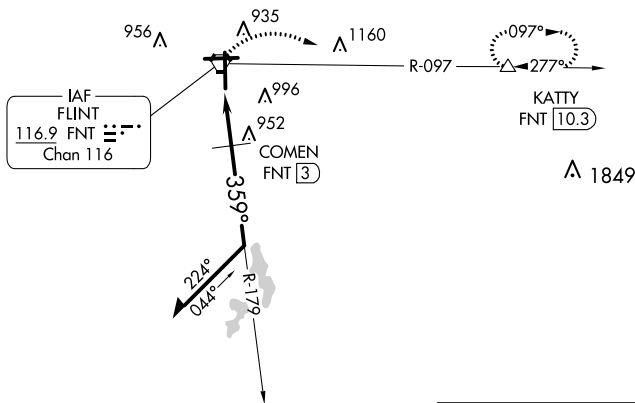
⚠ Rwy 36 helicopter visibility reduction below $\frac{3}{4}$ SM NA. DME required.

MISSED APPROACH: Climbing right turn to 3000 on FNT VORTAC R-097 to KATY/10.3 DME and hold.

ATIS 133.15	GREAT LAKES APP CON * 118.8 257.9	FLINT TOWER * 126.3 (CTAF) 257.9	GND CON 121.9	CLNC DEL 121.75	UNICOM 122.95
-----------------------	---	--	-------------------------	---------------------------	-------------------------



CAUTION: Brightly lighted parking lot 4000' east of approach end Rwy 27 can easily be confused for Rwy 27.



CATEGORY	A	B	C	D
S-36	1220-1	438 (500-1)	1220-1 $\frac{1}{4}$	438 (500-1 $\frac{1}{4}$)
C CIRCLING	1240-1 458 (500-1)	1300-1 518 (600-1)	1300-1 $\frac{1}{2}$ 518 (600-1 $\frac{1}{2}$)	1520-2 $\frac{1}{4}$ 738 (800-2 $\frac{1}{4}$)

EC-1, 27 JAN 2022 to 24 FEB 2022

EC-1, 27 JAN 2022 to 24 FEB 2022