

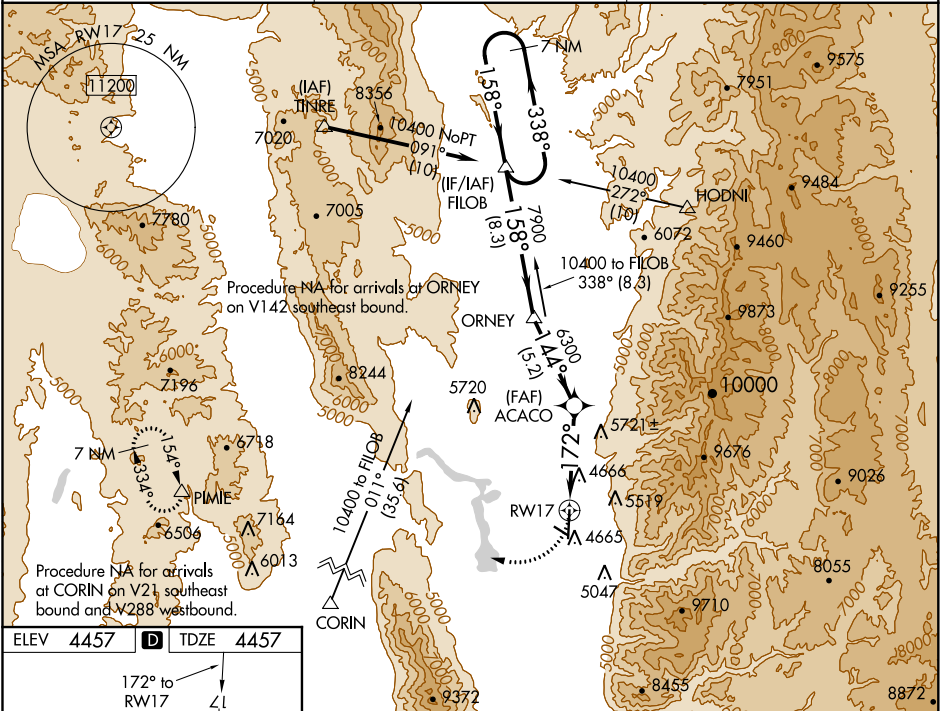
APP CRS 172°	Rwy ldg TDZE Apt Elev	9010 4457 4457
------------------------	-----------------------------	---

RNAV (GPS) RWY 17

LOGAN-CACHE (LGU)

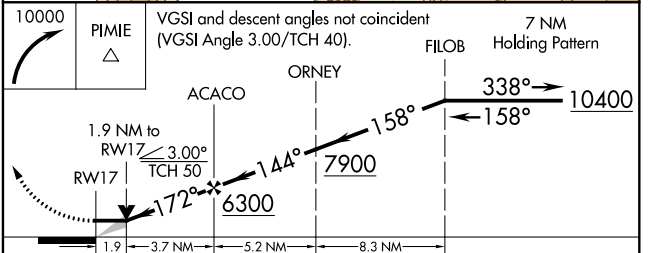
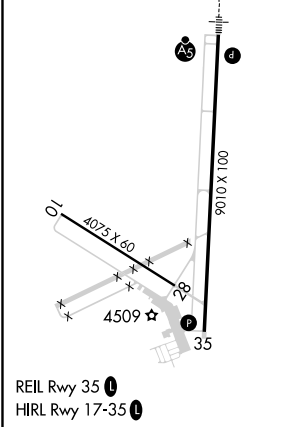
<p>V DME/DME RNP-0.3 NA. Circling NA east of Rwy 17-35. A Night Landing: Rwy 10-28 NA. ⊗ -15°C Inop table does not apply to LNAV Cats C/D. *Missed approach requires minimum climb of 310 feet per NM to 7700.</p>	<p>MALSR</p>	<p>MISSED APPROACH: Climbing right turn to 10000 direct PIMIE and hold, continue climb-in-hold to 10000.</p>
--	--------------	---

<p>ASOS 135.275</p>	<p>SALT LAKE CENTER 127.7 354.125</p>	<p>UNICOM 122.8 (CTAF)</p>
--------------------------------	--	---------------------------------------



SW-4, 27 JAN 2022 to 24 FEB 2022

SW-4, 27 JAN 2022 to 24 FEB 2022



CATEGORY	A	B	C	D
*LNAV MDA	5100-1/2	643 (700-1/2)	5100-1 3/8	643 (700-1 3/8)
LNAV MDA	5800-3/4 1343 (1400-3/4)	5800-1 1343 (1400-1)	5800-3	1343 (1400-3)
C CIRCLING	5800-1 1/4 1343 (1400-1 1/4)	5800-1 1/2 1343 (1400-1 1/2)	5800-3	1343 (1400-3)