

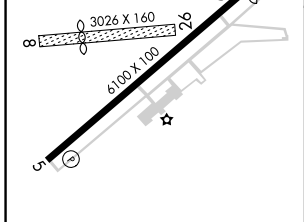
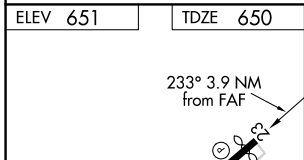
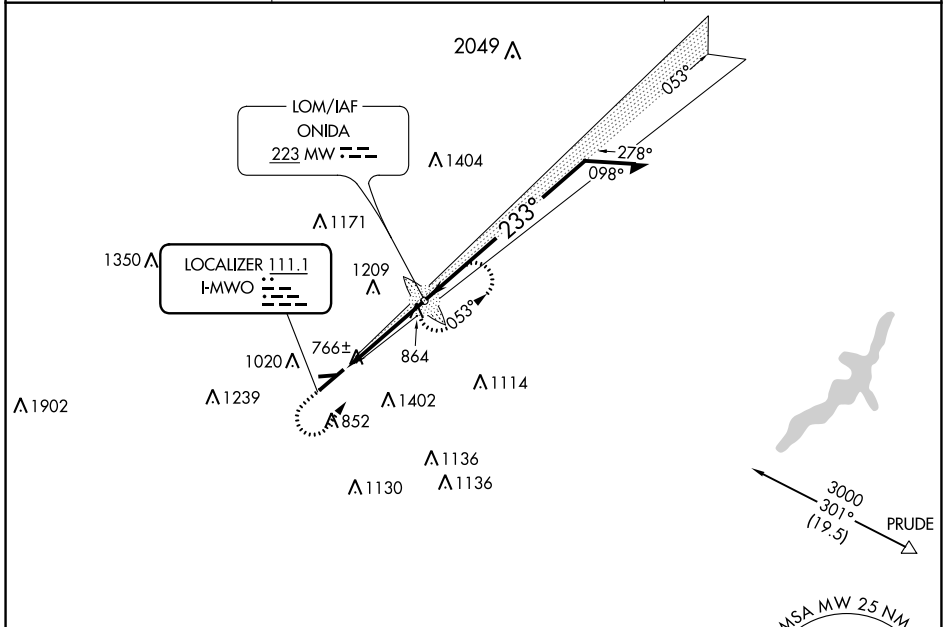
LOC I-MWVO 111.1	APP CRS 233°	Rwy Idg 5801
		TDZE 650
		Apt Elev 651

LOC RWY 23

MIDDLETOWN RGNL/HOOK FLD (MWO)

ADF required.		MISSED APPROACH: Climb to 2600 then climbing left turn to 3000 direct MW LOM and hold.
<p>▼ Circling Rwy 5 NA at night. Circling NA to Rwy 8 and 26. Rwy 23 helicopter visibility reduction below ¼ SM NA. When local altimeter setting not received, use Dayton-Wright Brothers altimeter setting and increase all MDAs 80 feet and S-23 Cat C/D visibility ¼ SM.</p> <p>▲ NA</p>		

AWOS-3 120.025	COLUMBUS APP CON 118.85 269.275	UNICOM 123.0 (CTAF)
--------------------------	---	-------------------------------



ELEV 651	TDZE 650
MIRL Rwy 5-23	
REIL Rwy 5	
REIL Rwy 23	
FAF to MAP 3.9 NM	
Knots	60 90 120 150 180
Min:Sec	3:54 2:36 1:57 1:34 1:18

2600	3000	MW	MW LOM	Remain within 10 NM
VGSI and descent angles not coincident (VGSI Angle 3.00/TCH 26).				
3.9 NM				

CATEGORY	A	B	C	D
S-23	1140-1	490 (500-1)	1140-1 ³ / ₈ 490 (500-1 ³ / ₈)	1140-1 ¹ / ₂ 490 (500-1 ¹ / ₂)
CIRCLING	1480-1 ¹ / ₄	829 (900-1 ¹ / ₄)	1720-3 1069 (1100-3)	1940-3 1289 (1300-3)

LOC RWY 23

EC-2, 27 JAN 2022 to 24 FEB 2022

EC-2, 27 JAN 2022 to 24 FEB 2022