

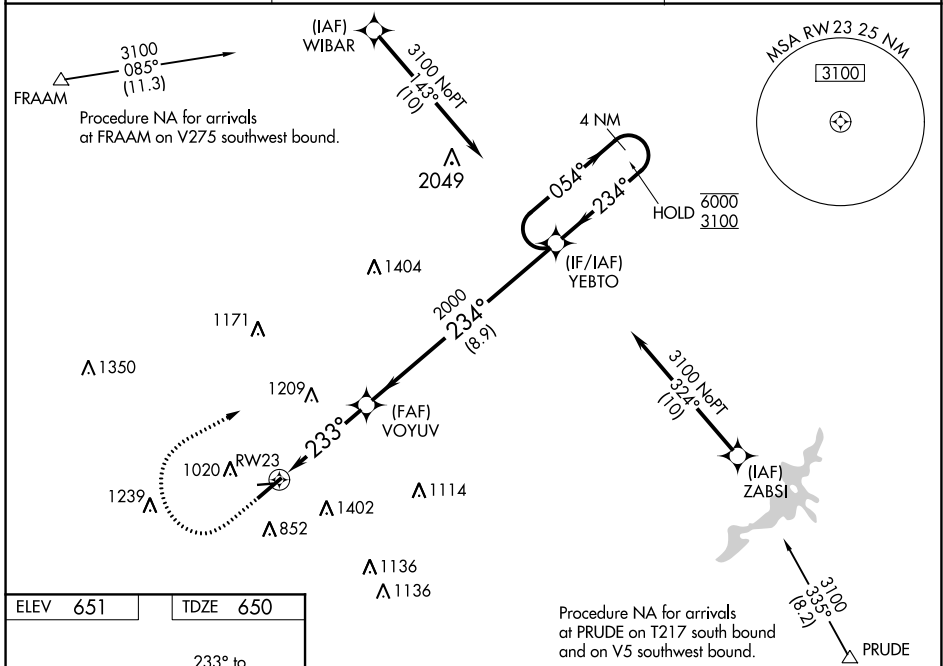
WAAS CH 90429 W23A	APP CRS 233°	Rwy Idg TDZE Apt Elev	5801 650 651
--	------------------------	-----------------------------	---

RNAV (GPS) RWY 23

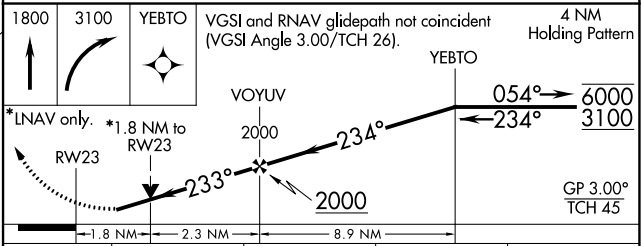
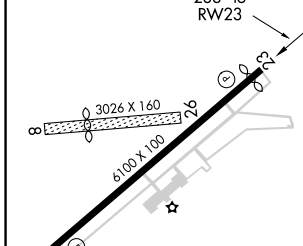
MIDDLETOWN RGNL/HOOK FLD (MWO)

RNP APCH.	<p>⚠ Circling NA to Rwy 8 and 26. Circling Rwy 5 NA at night. Rwy 23 helicopter visibility reduction below $\frac{3}{4}$ SM NA. For uncompensated Baro-VNAV systems, LNAV/VNAV NA below -16°C or above 54°C.</p>	<p>MISSED APPROACH: Climb to 1800 then climbing right turn to 3100 direct YEBTO and hold.</p>
-----------	--	---

AWOS-3 120.025	COLUMBUS APP CON 118.85 269.275	UNICOM 123.0 (CTAF) ①
--------------------------	---	---------------------------------



ELEV 651	TDZE 650
----------	----------



CATEGORY	A	B	C	D
LPV DA		986-1 $\frac{1}{8}$	336 (400-1 $\frac{1}{8}$)	
LNAV/VNAV DA		1083-1 $\frac{1}{2}$	433 (500-1 $\frac{1}{2}$)	
LNAV MDA	1140-1	490 (500-1)	1140-1 $\frac{3}{8}$	490 (500-1 $\frac{3}{8}$)
CIRCLING	1380-1	729 (800-1)	1720-3 1069 (1100-3)	1840-3 1189 (1200-3)

MIRL Rwy 5-23 ①
 REIL Rwy 5 ①
 REIL Rwy 23

EC-2, 27 JAN 2022 to 24 FEB 2022

EC-2, 27 JAN 2022 to 24 FEB 2022