

MARYSVILLE, CALIFORNIA

HI-ILS or LOC Z RWY 15

LOC I-BAB 109.5	APCH CRS 145°	Rwy ldg TDZE Arpt Elev	12,001 113 113
---------------------------	-------------------------	------------------------------	---

AL-771 (USAF)

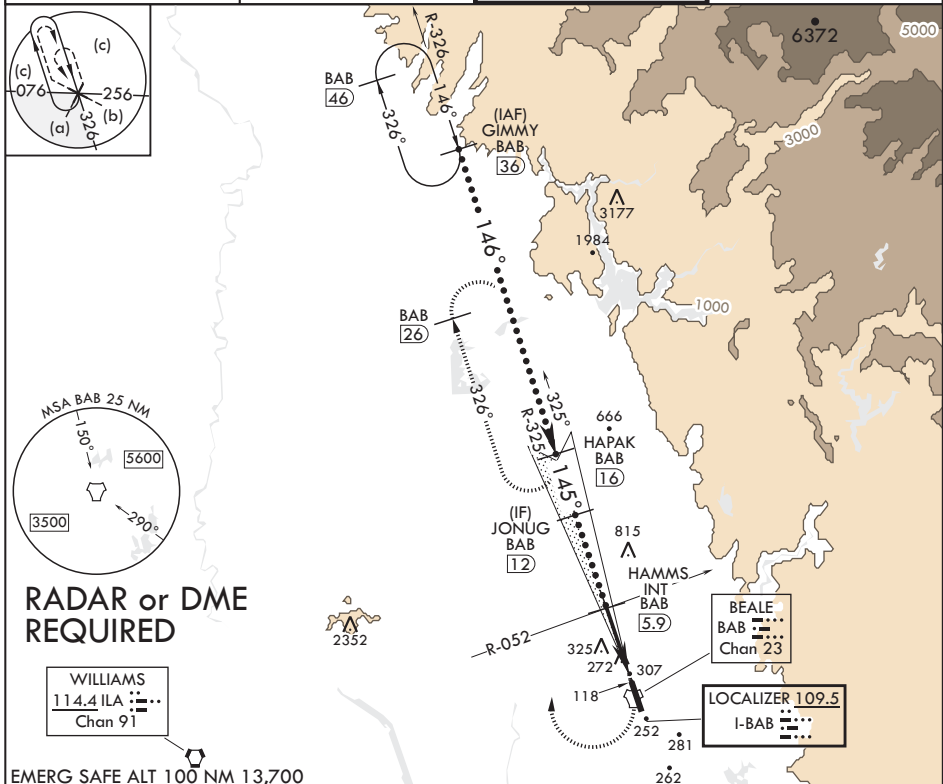
BEALE AFB (KBAB)

* When ALS inop, increase CAT CDE RVR to 40 and vis to 3/4 mile.
 ** When ALS inop, increase CAT CDE vis to 1 3/8 miles.
 *** Circling not authorized E of Rwy 15-33.

ALSF-1
A1

MISSED APPROACH: Climb to 4400 direct to BAB TACAN. Turn right to intercept BAB R-326 to HAPAK and hold, continue climb in hold to 4400.

ATIS* 124.55 273.5	NORCAL APP CON 125.4 259.1	TOWER* 119.4 284.75	GND CON 121.6 257.75
------------------------------	--------------------------------------	-------------------------------	--------------------------------



GIMMY 36 12,000
HAPAK 16 3600
JONUG 12 2600
HAMMS INT BAB 5.9 1600
HEGOP 1.5 2600
BAB TACAN 4400
BEALE BAB 23 Chan 23
LOCALIZER 109.5 I-BAB

GS 2.75°
TCH 47

VGSI and glideslope not coincidental.

ELEV 113
TDZE 113

145°
4.9 NM from FAF

12,000 x 3600
33

CATEGORY	C	D	E
S-ILS 15*	313/24	200	(200-1/2)
S-LOC 15**	620/55	507	(600-1)
CIRCLING***	620-1 1/2 507 (600-1 1/2)	680-2 567 (600-2)	840-2 1/2 727 (800-2 1/2)

HIRL all Rwys

MARYSVILLE, CALIFORNIA

39°08'N - 121°26'W

BEALE AFB (KBAB)

Amdt 5 20JUL17

HI-ILS or LOC Z RWY 15

SW-2, 27 JAN 2022 to 24 FEB 2022

SW-2, 27 JAN 2022 to 24 FEB 2022