

MARYSVILLE, CALIFORNIA

HI-ILS or LOC Z RWY 33

LOC I-MIZ 109.5	APCH CRS 325°	Rwy ldg 12,001	TDZE 105	Arprt Elev 113
---------------------------	-------------------------	-------------------	-------------	-------------------

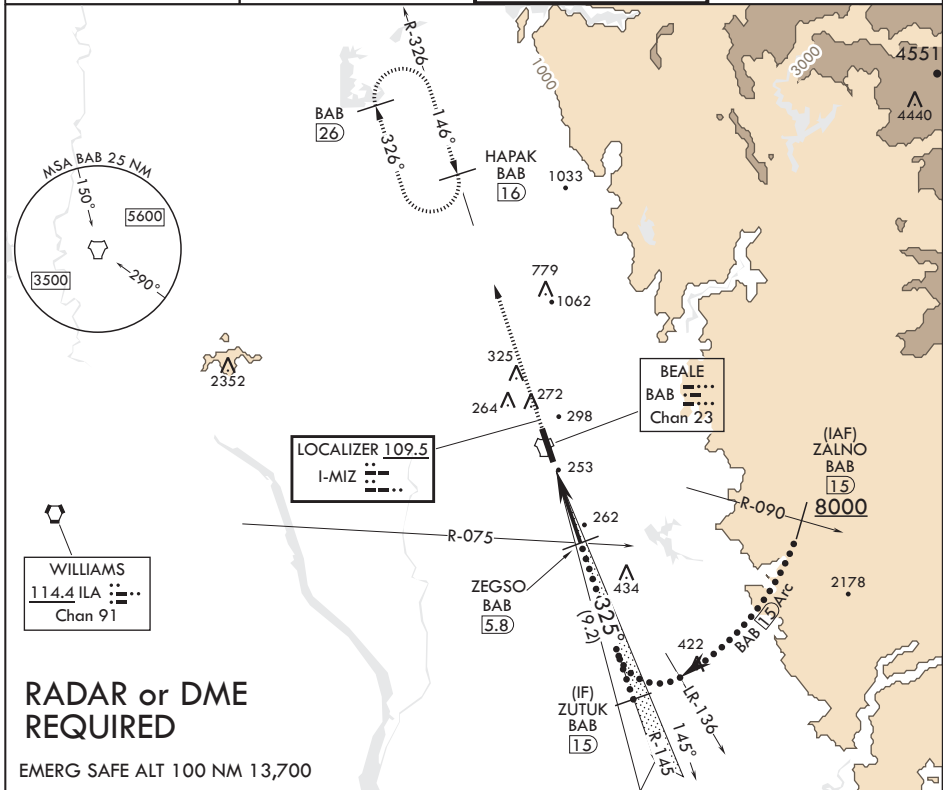
JAL-771 (USAF)

BEALE AFB (KBAB)

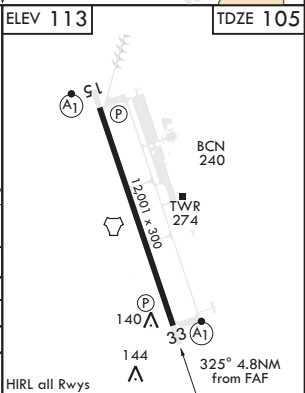
* When ALS inop, increase CAT CDE RVR to 40 and vis to 3/4 mile.
 ** When ALS inop, increase CAT CDE RVR to 60 vis to 1 1/8 miles.
 *** Circling not authorized E of Rwy 15-33.

ALSF-1
 MISSED APPROACH: Climb to 3600 intercept BAB R-326 to HAPAK and hold.

ATIS* 124.55 273.5	NORCAL APP CON 125.4 259.1	TOWER* 119.4 284.75	GND CON 121.6 257.75
------------------------------	--------------------------------------	-------------------------------	--------------------------------



3600 ↑ BAB R-326	HAPAK BAB 16	ZUTUK BAB R-145 15	ZALNO BAB R-090 15	ELEV 113	TDZE 105
†LOC only TACAN ZAPUX 1.5 †2.1 ZEGSO ILA R-075 BAB 5.8 325° 3200 1700 GS 3.00° TCH 51 0.5 4.3 NM 15 Arc					
CATEGORY	C	D	E		
S-ILS 33*	305/24	200	(200-1/2)		
S-LOC 33**	520/40	415	(500-3/4)		
CIRCLING***	600-1 1/2 487 (500-1 1/2)	680-2 567 (600-2)	840-2 1/2 727 (800-2 1/2)		



MARYSVILLE, CALIFORNIA

39°08'N - 121°26'W

BEALE AFB (KBAB)

Amdt 5 20JUL17

HI-ILS or LOC Z RWY 33

SW-2, 27 JAN 2022 to 24 FEB 2022

SW-2, 27 JAN 2022 to 24 FEB 2022