

MARYSVILLE, CALIFORNIA

# ILS or LOC Y RWY 15

LOC I-BAB <b>109.5</b>	APCH CRS <b>145°</b>	Rwy ldg TDZE Arprt Elev	<b>12,001</b> <b>113</b> <b>113</b>
---------------------------	-------------------------	-------------------------------	---

AL-771 (USAF)

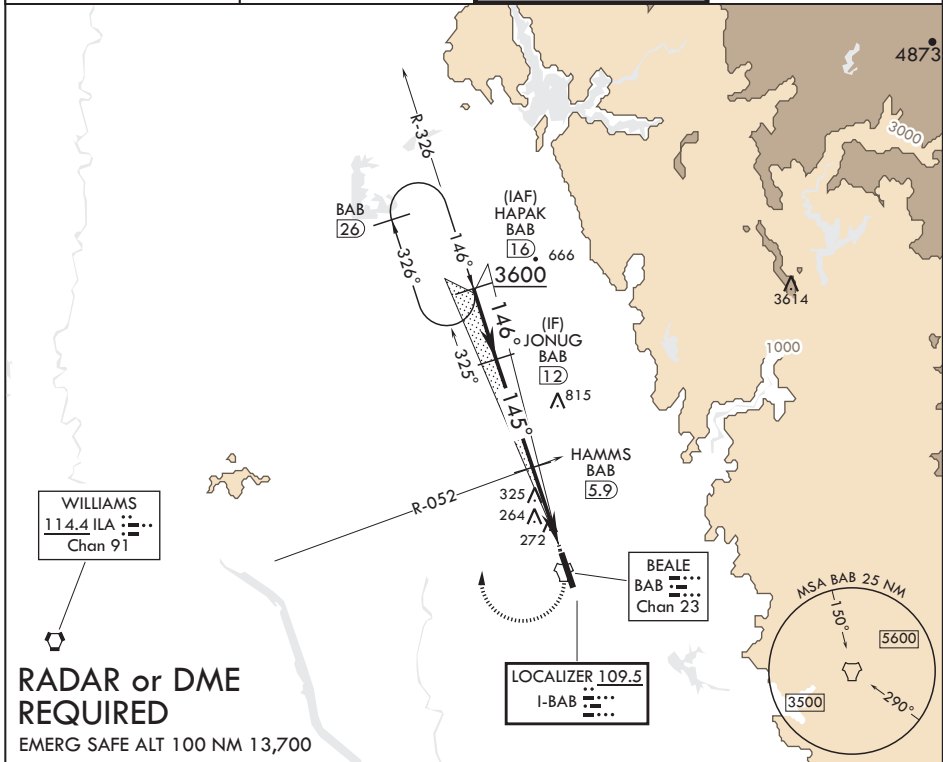
BEALE AFB (KBAB)

**⚠** \* When ALS inop, increase RVR to 40 and vis to 3/4 mile.  
 \*\* When ALS inop, increase CAT AB RVR to 55 and vis to 1 mile, CAT CDE vis to 1 3/8 miles.  
 \*\*\* Circling not authorized E of Rwy 15-33.



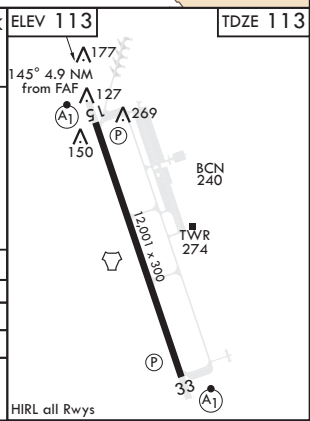
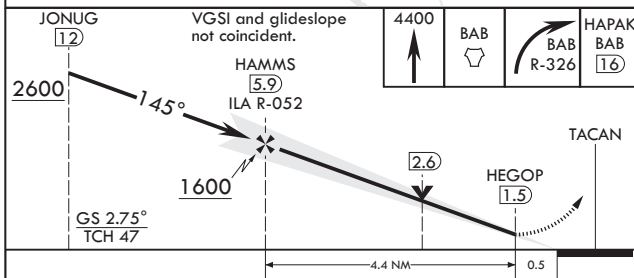
**MISSED APPROACH:** Climb to 4400 direct BAB TACAN. Turn right to intercept BAB R-326 to HAPAK and hold, continue climb in hold to 4400.

ATIS* <b>124.55 273.5</b>	NORCAL APP CON <b>125.4 259.1</b>	TOWER* <b>119.4 284.75</b>	GND CON <b>121.6 257.75</b>
------------------------------	--------------------------------------	-------------------------------	--------------------------------



**RADAR or DME REQUIRED**

EMERG SAFE ALT 100 NM 13,700



CATEGORY	A	B	C	D	E
S-ILS 15*	313/24		200	(200-1/2)	
S-LOC 15**	620/24	507 (600-1/2)	620/55	507	(600-1)
<b>C</b> CIRCLING***	620-1	507 (600-1)	620-1 1/2 507 (600-1 1/2)	680-2 567 (600-2)	840-2 1/2 (800-2 1/2)

HIRL all Rwys

MARYSVILLE, CALIFORNIA

39°08'N - 121°26'W

BEALE AFB (KBAB)

Amdt 5 20JUL17

# ILS or LOC Y RWY 15

SW-2, 27 JAN 2022 to 24 FEB 2022

SW-2, 27 JAN 2022 to 24 FEB 2022