

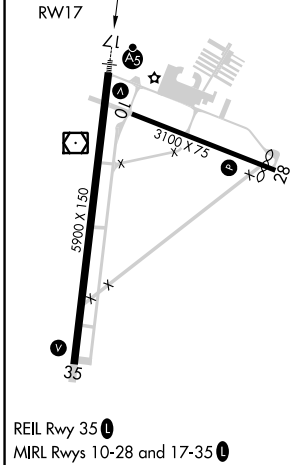
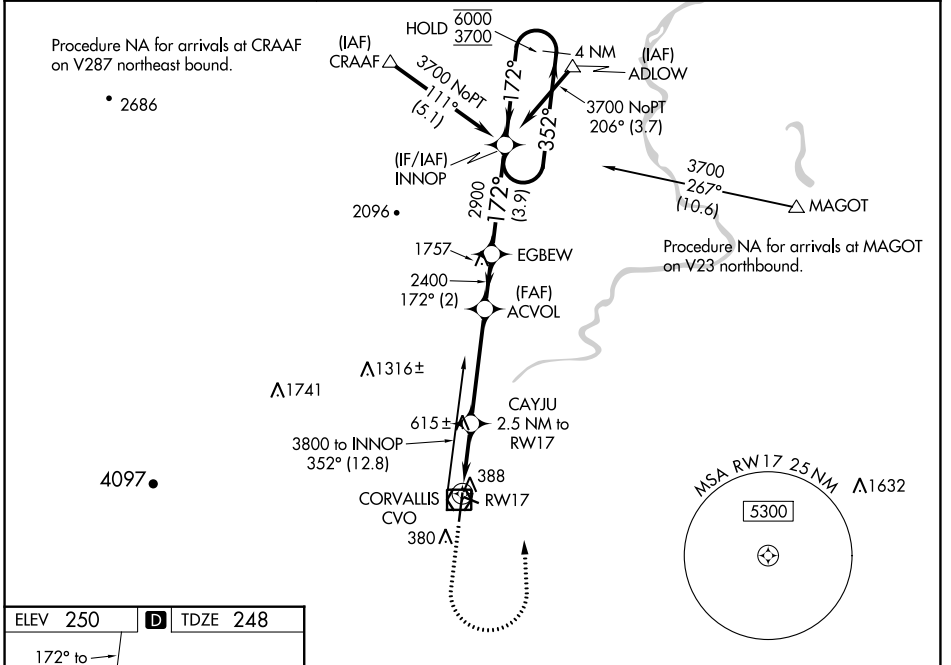
WAAS CH 78311 W17A	APP CRS 172°	Rwy Idg TDZE Apt Elev	5900 248 250
--	------------------------	-----------------------------	---

RNAV (GPS) RWY 17

CORVALLIS MUNI (CVO)

RNP APCH - GPS.	MALSR 	MISSED APPROACH: Climb to 1100 then climbing left turn to 3700 direct INNOP and hold, continue climb-in-hold to 3700.
⚠ Circling Rwy 28 NA at night. For uncompensated Baro-VNAV systems, LNAV/VNAV NA below -15°C or above 54°C. When local altimeter setting not received, procedure NA. For inop ALS, increase LNAV Cat C/D visibility to 1¼ SM.		

AWOS-3PT 135.775	CASCADE APP CON ★ 127.5 348.7	UNICOM 123.075 (CTAF) ①
----------------------------	---	-----------------------------------



1100	3700	INNOP	INNOP	4 NM Holding Pattern
ACVOL	EGBEW	INNOP	INNOP	
CAYJU 2.5 NM to RWY 17	2400	2900	3700	6000
1.8 NM to RWY 17	2400	172°	352°	3700
1.8 NM	0.7	4.1 NM	2 NM	3.9 NM
CATEGORY	A	B	C	D
LPV DA	DA	448-½	200 (200-½)	
LNAV/VNAV DA	DA	571-½	323 (400-½)	
LNAV MDA	880-½	632 (700-½)	880-1¾	632 (700-1¾)
C CIRCLING	880-1	630 (700-1)	920-1¾	1080-2¾
			670 (700-1¾)	830 (900-2¾)

NW-1, 27 JAN 2022 to 24 FEB 2022

NW-1, 27 JAN 2022 to 24 FEB 2022