

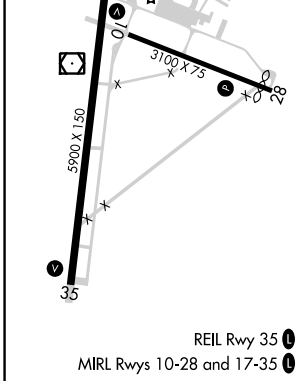
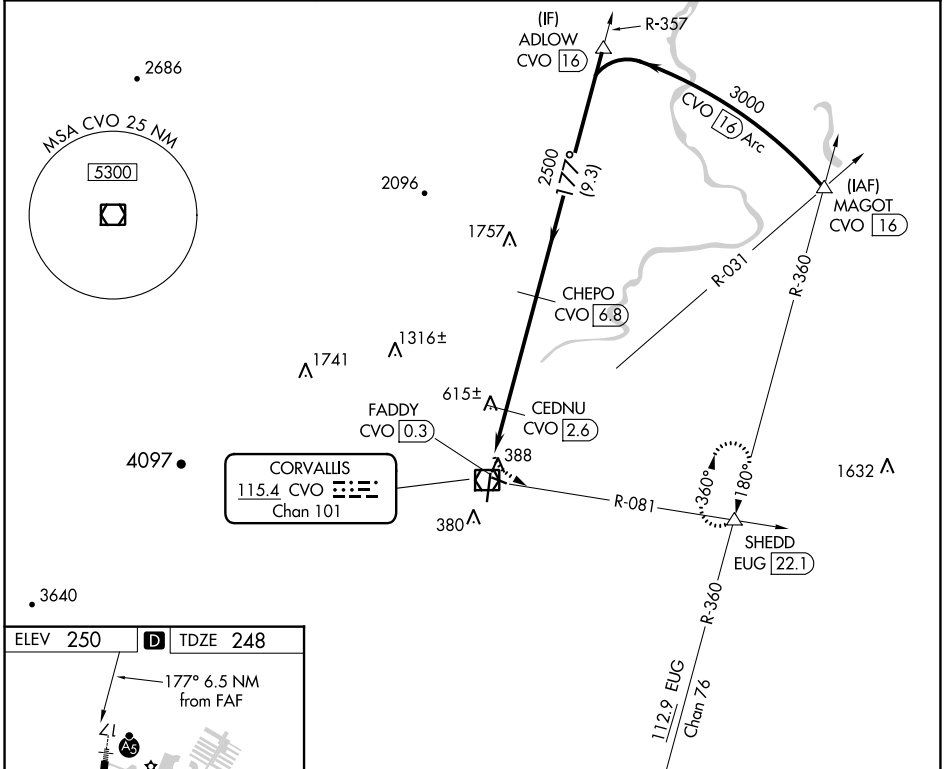
VOR/DME CVO 115.4 Chan 101	APP CRS 177°	Rwy Idg TDZE Apt Elev	5900 248 250
--	------------------------	-----------------------------	---

VOR RWY 17

CORVALLIS MUNI (CVO)

DME required. <p>⚠ Circling Rwy 28 NA at night. When local altimeter setting not received, procedure NA. For inop ALS, increase S-17 Cat C/D visibility to 1¼ SM.</p>	MALSR 	MISSED APPROACH: Climbing left turn to 3000 on CVO VOR/DME R-081 to SHEDD INT/EUG 22.1 DME and hold, continue climb-in-hold to 3000.
--	-----------	--

AWOS-3PT 135.775	CASCADE APP CON ★ 127.5 348.7	UNICOM 123.075 (CTAF)
----------------------------	---	---------------------------------



	3000 CVO R-081	SHEDD	VGSI and descent angles not coincident (VGSI Angle 3.00/TCH 45).		ADLOW CVO 16
			CEDNU CVO 2.6	CHEPO CVO 6.8	
			FADDY CVO 0.3		
			1100	2500	3000
			1.8 NM	0.6	4.1 NM
					9.3 NM
CATEGORY	A	B	C	D	
S-17	880-½	632 (700-½)	880-1⅓	632 (700-1⅓)	
Ⓢ CIRCLING	880-1	630 (700-1)	920-1¾ 670 (700-1¾)	1080-2¾ 830 (900-2¾)	

NW-1, 27 JAN 2022 to 24 FEB 2022

NW-1, 27 JAN 2022 to 24 FEB 2022