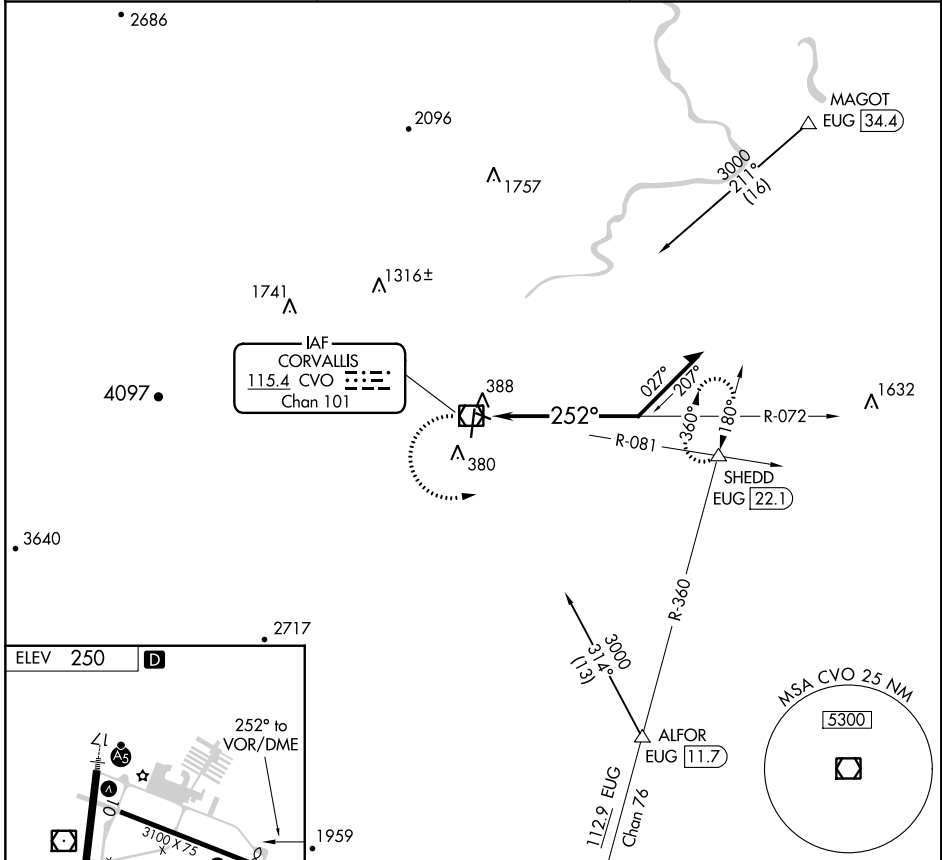


VOR/DME CVO 115.4 Chan 101	APP CRS 252°	Rwy Idg TDZE Apt Elev	N/A N/A 250
--	------------------------	-----------------------------	--------------------------

VOR-A
CORVALLIS MUNI (CVO)

⚠ When local altimeter setting not received, procedure NA. MISSED APPROACH: Climbing left turn to 3000 on CVO VOR/DME R-081 to SHEDD INT/EUG 22.1 DME and hold, continue climb-in-hold to 3000.

AWOS-3PT 135.775	CASCADE APP CON * 127.5 348.7	UNICOM 123.075 (CTAF) 0
----------------------------	---	-----------------------------------



C CIRCLING	CATEGORY A 1400-1¼ 1150 (1200-1¼)	CATEGORY B 1400-1½ 1150 (1200-1½)	CATEGORY C 1400-3	CATEGORY D 1150 (1200-3)
-------------------	---	---	----------------------	-----------------------------

REIL Rwy 35	MIRL Rws 10-28 and 17-35
-------------	--------------------------

NW-1, 27 JAN 2022 to 24 FEB 2022

NW-1, 27 JAN 2022 to 24 FEB 2022