

WAAS CH 99426 W18A	APP CRS 176°	Rwy Idg TDZE Apt Elev	6109 356 365
--	------------------------	-----------------------------	---

RNAV (GPS) RWY 18

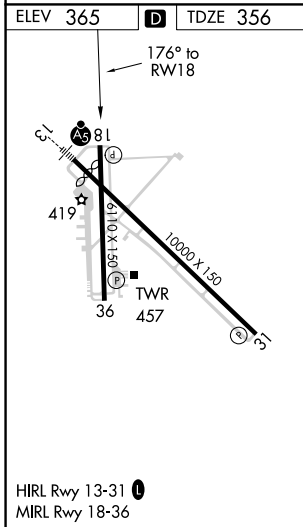
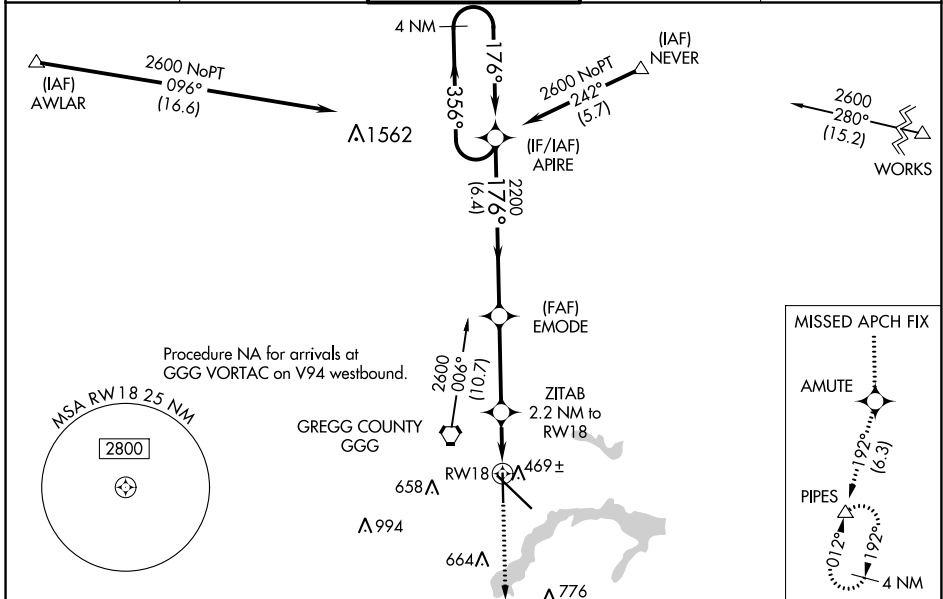
EAST TEXAS RGNL (GGG)

RNP APCH - GPS.

▼ Baro-VNAV NA when using Gilmer altimeter setting. For uncompensated Baro-VNAV systems, LNAV/VNAV NA below -15°C or above 41°C. Rwy 18 helicopter visibility reduction below ¼ SM NA.
 ▲ When local altimeter setting not received, use Gilmer altimeter setting and increase all DA 59 feet and all MDA 60 feet; increase LPV and LNAV/VNAV visibility all Cats ⅛ SM and LNAV and Circling visibility Cats C/D ¼ SM.

MISSED APPROACH:
 Climb to 2400 direct
 AMUTE and on track
 192° to PIPES and hold.

ATIS 119.65	LONGVIEW APP CON* 128.75 379.15	EASTEX TOWER* 119.2(CTAF) 0377.05	GND CON 121.6	UNICOM 122.95
-----------------------	---	---	-------------------------	-------------------------



ELEV 365	D	TDZE 356	4 NM Holding Pattern	2400	AMUTE	PIPES
			APIRE	↑	fr 192°	△
			EMODE	*LNAV only.		
			ZITAB* 2.2 NM to RWY 18			
			1 NM to RWY 18			
			GP 3.00° TCH 53			
			6.4 NM	3.4 NM	1.2 NM	1.0
CATEGORY	A	B	C	D		
LPV DA		630-7/8	274 (300-7/8)			
LNAV/VNAV DA		652-1	296 (300-1)			
LNAV MDA		720-1	364 (400-1)			
CIRCLING	860-1	495 (500-1)	980-1 3/4 614 (700-1 3/4)	1080-2 1/4 714 (800-2 1/4)		

SC-2, 27 JAN 2022 to 24 FEB 2022

SC-2, 27 JAN 2022 to 24 FEB 2022