

WAAS CH 53504 W31A	APP CRS 311°	Rwy Idg TDZE Apt Elev	9200 354 365
--	------------------------	-----------------------------	---

RNAV (GPS) RWY 31

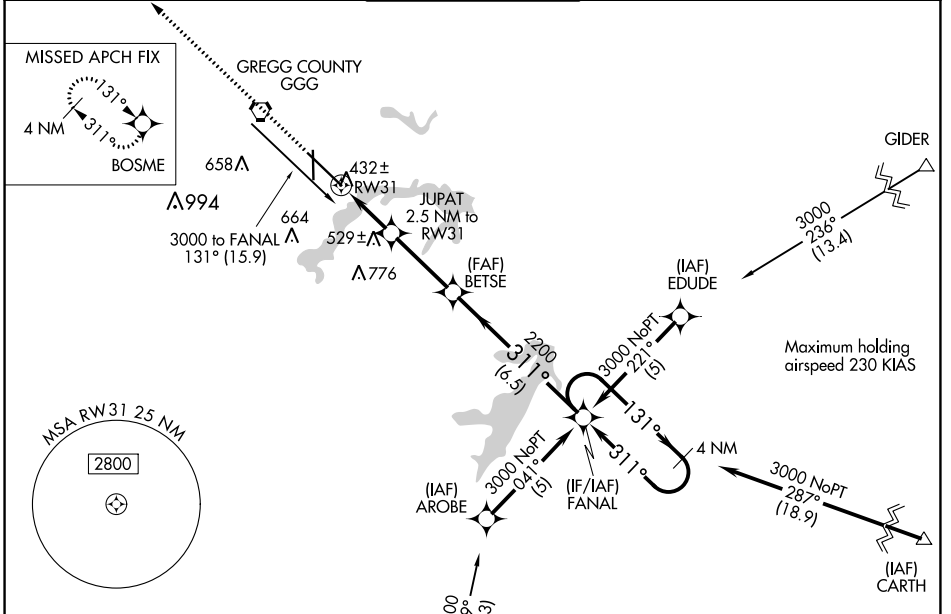
EAST TEXAS RGNL (GGG)

RNP APCH - GPS.

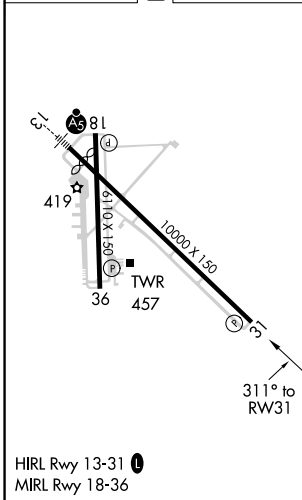
⚠ Baro-VNAV NA when using Gilmer altimeter setting. For uncompensated Baro-VNAV systems, LNAV/VNAV NA below -15°C or above 48°C. VDP NA when using Gilmer altimeter setting. When local altimeter setting not received, use Gilmer altimeter setting and increase all DA 59 feet, all MDA 60 feet. Increase all LPV and LNAV/VNAV visibilities 1/8 SM and Circling Cats C/D/E visibilities 1/4 SM.

MISSED APPROACH:
Climb to 2600 direct BOSME and hold.

ATIS 119.65	LONGVIEW APP CON* 128.75 379.15	EASTEX TOWER* 119.2 (CTAF) 377.05	GND CON 121.6	UNICOM 122.95
-----------------------	---	---	-------------------------	-------------------------



ELEV 365	D	TDZE 354
-----------------	----------	-----------------



2600	BOSME	* LNAV only	FANAL	4 NM Holding Pattern	
2200	JUPAT 2.5 NM to RW31	BETSE	FANAL	3000	
1200	* 1.2 NM to RW31	2200	311°	GP 3.00° TCH 50	
1.2	1.3	3.1 NM	6.5 NM		
CATEGORY	A	B	C	D	E
LPV DA		604-3/4			250 (300-3/4)
LNAV/VNAV DA	682-1/4 328 (400-1/4)				
LNAV MDA	800-1	446 (500-1)	800-1 1/4	800-1 1/2	446 (500-1 1/2)
CIRCLING	860-1	495 (500-1)	980-1 3/4	1080-2 1/4	1080-2 1/2
			614 (700-1 3/4)	714 (800-2 1/4)	715 (800-2 1/2)

SC-2, 27 JAN 2022 to 24 FEB 2022

SC-2, 27 JAN 2022 to 24 FEB 2022