

APP CRS <b>356°</b>	Rwy Idg <b>6109</b>
	TDZE <b>365</b>
	Apt Elev <b>365</b>

# RNAV (GPS) RWY 36

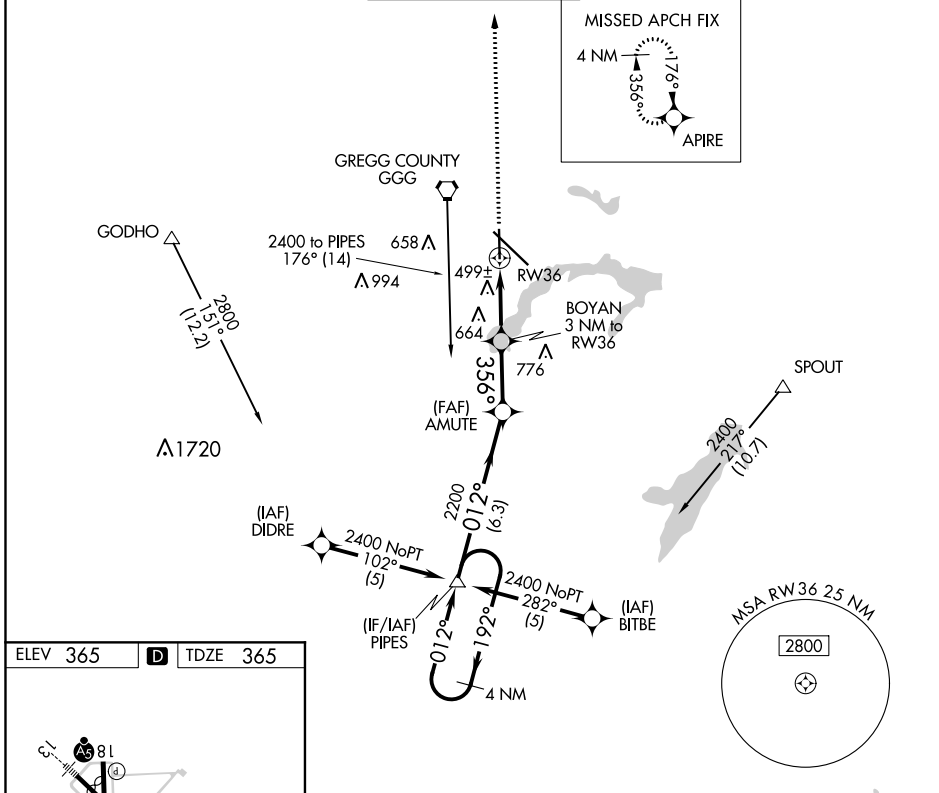
EAST TEXAS RGNL (GGG)

RNP APCH - GPS.

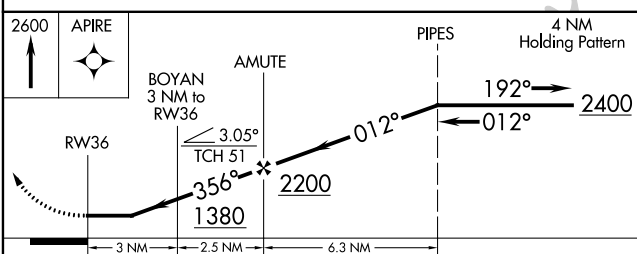
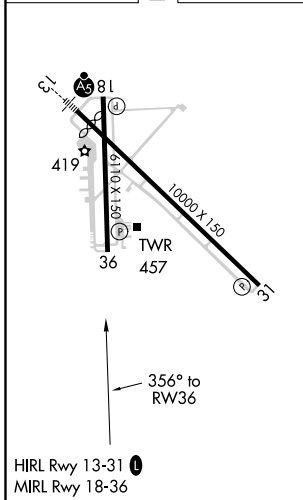
▼ Visibility reduction by helicopters NA. When local altimeter setting not received, use Gilmer  
 ▲ altimeter setting and increase all MDA 60 feet and LNAV and Circling Cats C/D visibility ¼ SM.

MISSED APPROACH: Climb to 2600 direct APIRE and hold.

ATIS <b>119.65</b>	LONGVIEW APP CON* <b>128.75 379.15</b>	EASTEX TOWER* <b>119.2(CTAF) 377.05</b>	GND CON <b>121.6</b>	UNICOM <b>122.95</b>
-----------------------	---	--	-------------------------	-------------------------



ELEV 365	<b>D</b>	TDZE 365
----------	----------	----------



CATEGORY	A	B	C	D
LNAV MDA	760-1 395 (400-1)			760-1¼ 395 (400-1¼)
CIRCLING	860-1	495 (500-1)	980-1¾ 614 (700-1¾)	1080-2¼ 714 (800-2¼)

SC-2, 27 JAN 2022 to 24 FEB 2022

SC-2, 27 JAN 2022 to 24 FEB 2022