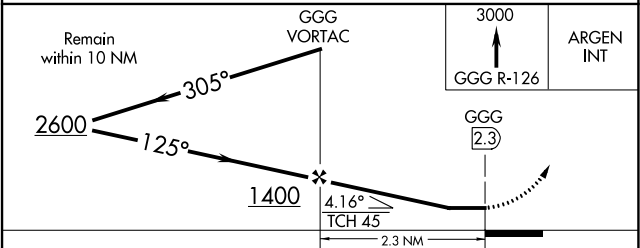
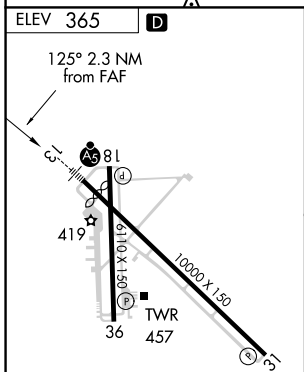
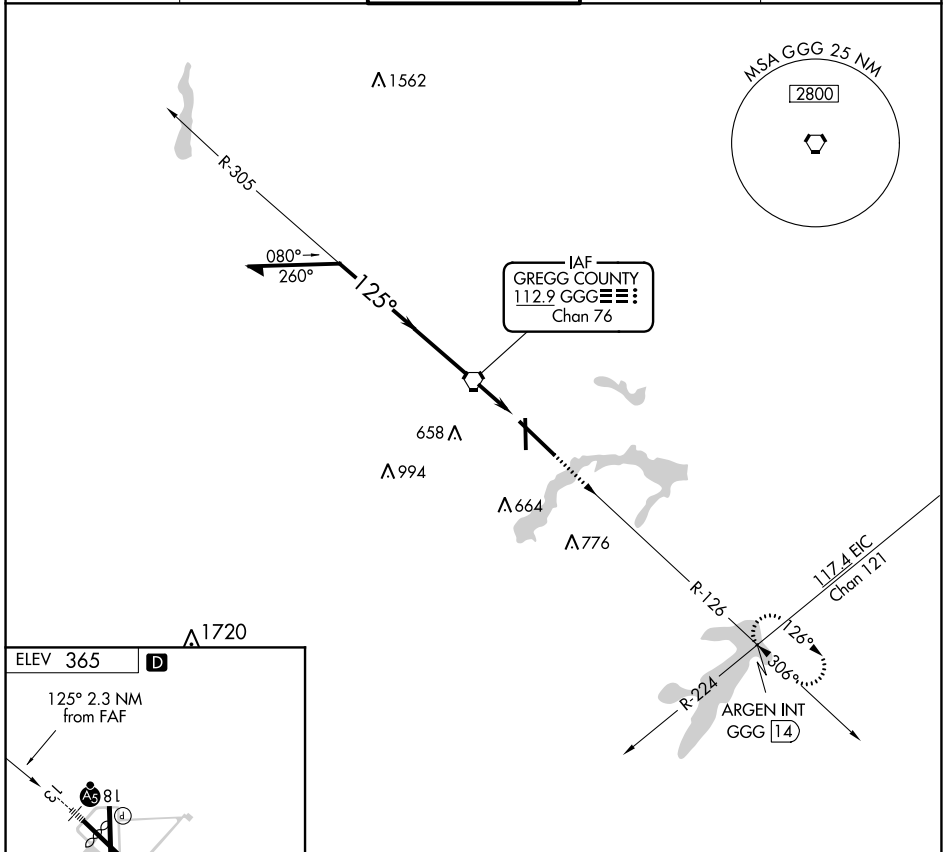


VORTAC GGG 112.9 Chan 76	APP CRS 125°	Rwy Idg TDZE Apt Elev	N/A N/A 365
--	------------------------	-----------------------------	--

VOR-A
EAST TEXAS RGNL (GGG)

When local altimeter setting not received, use Gilmer altimeter setting and increase all MDA 60 feet. MISSED APPROACH: Climb to 3000 via GGG VORTAC R-126 to ARGEN Int/GGG 14 DME and hold.

ATIS 119.65	LONGVIEW APP CON* 128.75 379.15	EASTEX TOWER* 119.2 (CTAF) 377.05	GND CON 121.6	UNICOM 122.95
-----------------------	---	---	-------------------------	-------------------------



FAF to MAP 2.3 NM					
Knots	60	90	120	150	180
Min:Sec	2:18	1:32	1:09	0:55	0:46

CATEGORY	A	B	C	D
CIRCLING	860-1	495 (500-1)	980-1 ³ / ₄ 614 (700-1 ³ / ₄)	1080-2 ¹ / ₄ 714 (800-2 ¹ / ₄)

SC-2, 27 JAN 2022 to 24 FEB 2022

SC-2, 27 JAN 2022 to 24 FEB 2022