

VORTAC GGG 112.9 Chan 76	APP CRS 125°	Rwy Idg TDZE Apt Elev	9200 358 365
---------------------------------------	------------------------	-----------------------------	---

VOR/DME or TACAN RWY 13

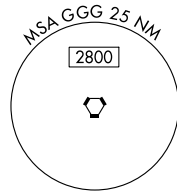
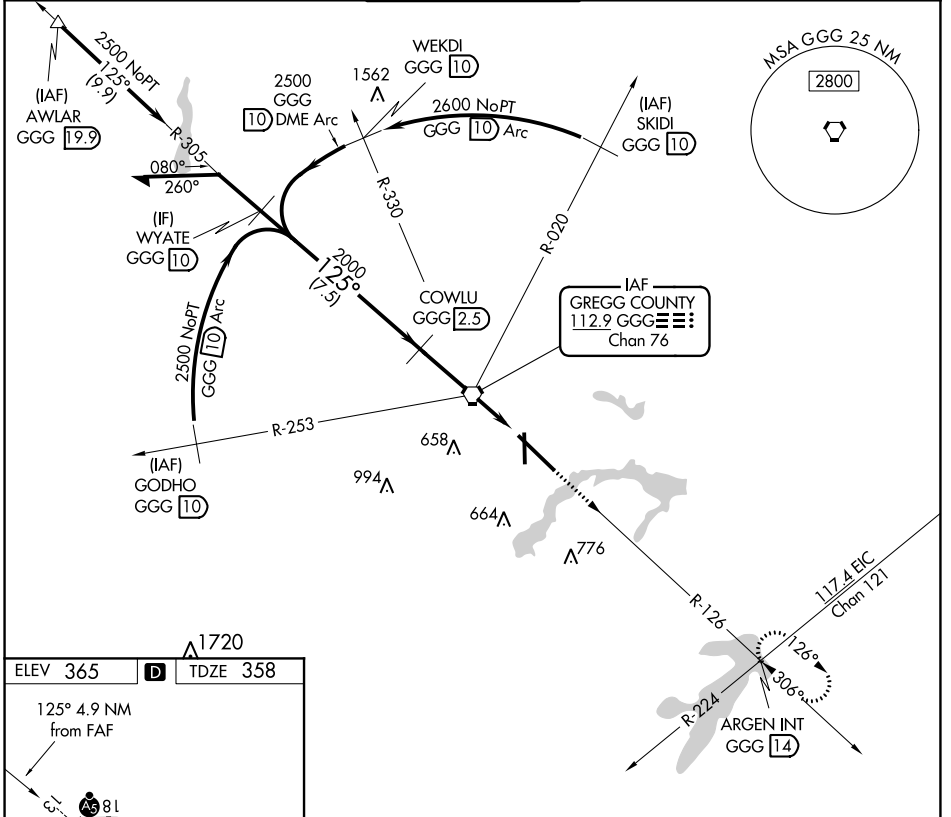
EAST TEXAS RGNL (GGG)

⚠ For inop ALS, increase S-13 Cat C/D/E visibility to 1/2 SM. When local altimeter setting not received use Gilmer altimeter setting and increase all MDA 60 feet, S-13 and Circling Cats C/D/E visibility 1/4 SM. VDP NA when using Gilmer altimeter setting. For inop ALS when using Gilmer altimeter setting increase S-13 Cat C/D/E visibility to 1/2 SM.

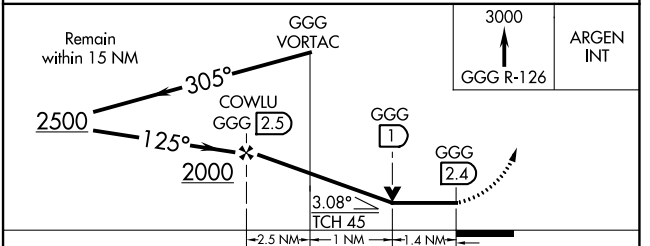
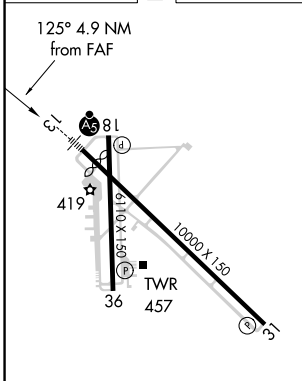


MISSED APPROACH:
Climb to 3000 via GGG R-126 to ARGEN Int/GGG 14 DME and hold.

ATIS 119.65	LONGVIEW APP CON* 128.75 379.15	EASTEX TOWER* 119.2(CTAF) 377.05	GND CON 121.6	UNICOM 122.95
-----------------------	---	--	-------------------------	-------------------------



ELEV 365	D	TDZE 358
----------	----------	----------



CATEGORY	A	B	C	D	E
S-13	860/24 502 (500-1/2)		860/55 502 (500-1)		860/55 502 (500-1)
CIRCLING	860-1 495 (500-1)		980-1 3/4 614 (700-1 3/4)	1080-2 1/4 714 (600-2 1/4)	1080-2 1/2 715 (800-2 1/2)

SC-2, 27 JAN 2022 to 24 FEB 2022

SC-2, 27 JAN 2022 to 24 FEB 2022