

VORTAC GGG <b>112.9</b> Chan 76	APP CRS <b>306°</b>	Rwy Idg TDZE Apt Elev	<b>9200</b> <b>354</b> <b>365</b>
---------------------------------------	------------------------	-----------------------------	---

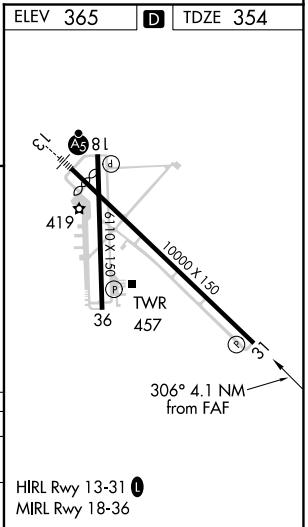
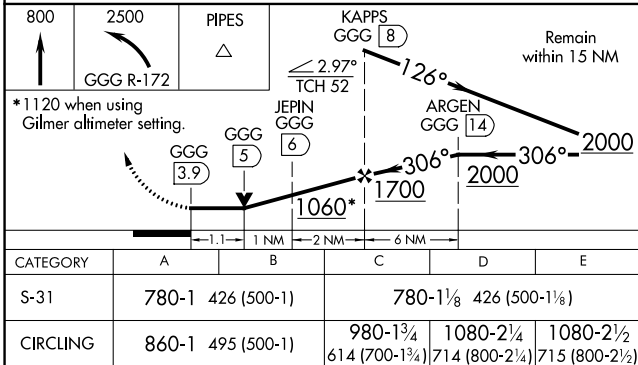
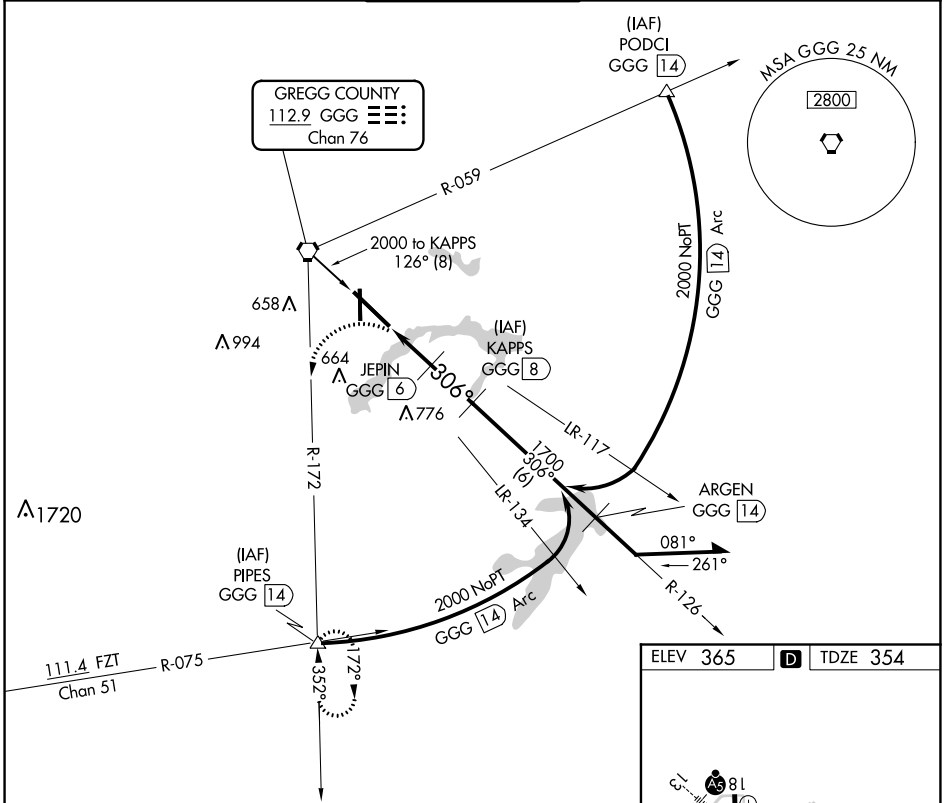
# VOR/DME or TACAN RWY 31

EAST TEXAS RGNL (GGG)

**⚠** When local altimeter setting not received, use Gilmer altimeter setting and increase all MDA 60 feet and increase S-31 Cats C/D/E and Circling Cats C/D/E visibility 1/4 SM. VDP NA when using Gilmer altimeter setting.

**MISSED APPROACH:** Climb to 800, then climbing left turn to 2500 via GGG R-172 to PIPES INT and hold.

ATIS <b>119.65</b>	LONGVIEW APP CON* <b>128.75 379.15</b>	EASTEX TOWER* <b>119.2 (CTAF) 377.05</b>	GND CON <b>121.6</b>	UNICOM <b>122.95</b>
-----------------------	---	---	-------------------------	-------------------------



SC-2, 27 JAN 2022 to 24 FEB 2022

SC-2, 27 JAN 2022 to 24 FEB 2022