

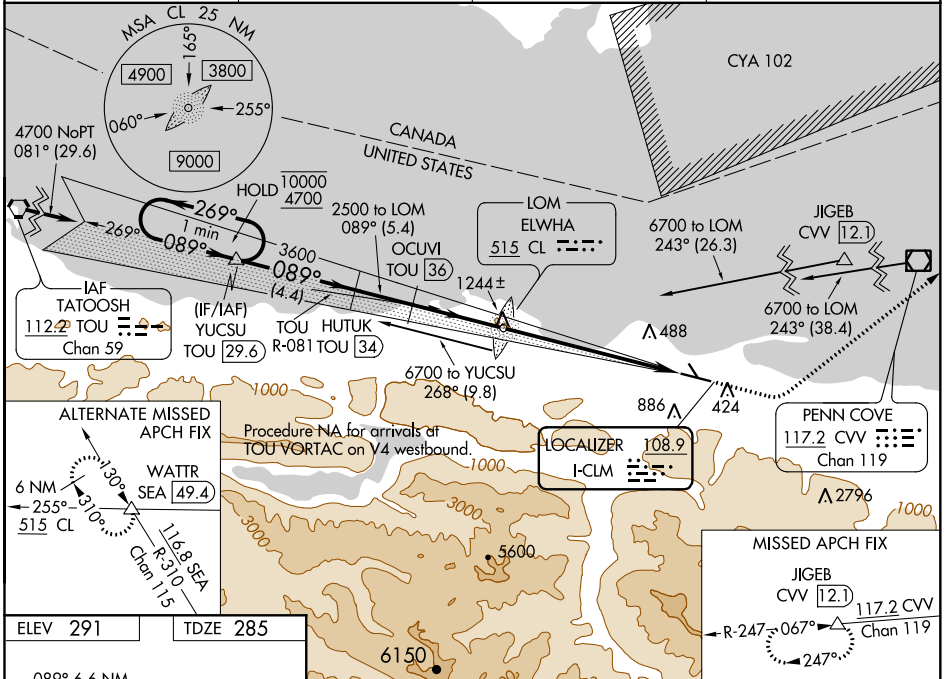
LOC I-CLM 108.9	APP CRS 089°	Rwy Idg TDZE Apt Elev	6347 285 291
---------------------------	------------------------	-----------------------------	---

ILS or LOC RWY 8

WILLIAM R FAIRCHILD INTL (CLM)

DME required.	MALSR	MISSED APPROACH: Climb to 1000 then climbing left turn to 5400 on heading 030° and on CVV VOR/DME R-247 to JIGEB/CVV 12.1 DME and hold, continue climb-in-hold to 5400.
Circling NA south of Rwy 8-26. Night Landing: Rwy 13, 31 NA. DME from TOU VORTAC. Simultaneous reception of I-CLM and TOU DME required. For inop ALS, increase S-LOC 8 Cat C/D visibility to 1 3/4 mile.		

ASOS 135.175	WHIDBEY APP CON 118.2 285.65	CLNC DEL 124.15	UNICOM 122.975 (CTAF)
------------------------	--	---------------------------	---------------------------------



ELEV 291	TDZE 285
089° 6.6 NM from FAF	
MIRL Rwy 8-26	
REIL Rwy 26	
FAF to MAP 6.6 NM	
Knots	60 90 120 150 180
Min:Sec	6:36 4:24 3:18 2:38 2:12

VGSI and ILS glidepath not coincident (VGSI Angle 3.00/TCH 50).			
One Minute Holding Pattern	YUCSU TOU 29.6	HUTUK TOU 34	OCUVI TOU 36
1000	4700	3600	3500
GS 3.00° TCH 54	269°	089°	089°
	4.4 NM	2.1 NM	3.3 NM
			6.6 NM
CATEGORY	A	B	C
S-ILS 8	496-1/2 211 (300-1/2)		
S-LOC 8	900-1/2	615 (700-1/2)	900-1 3/8 615 (700-1 3/8)
CIRCLING	900-1	609 (700-1)	900-1 3/4 709 (800-2 1/4)

NW-1, 27 JAN 2022 to 24 FEB 2022

NW-1, 27 JAN 2022 to 24 FEB 2022