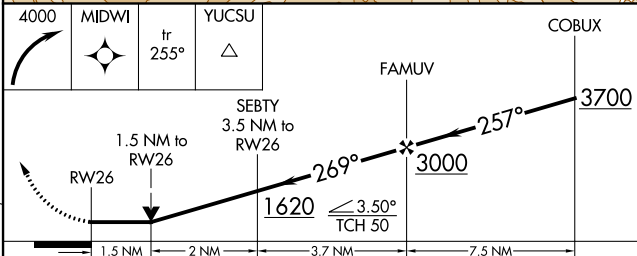
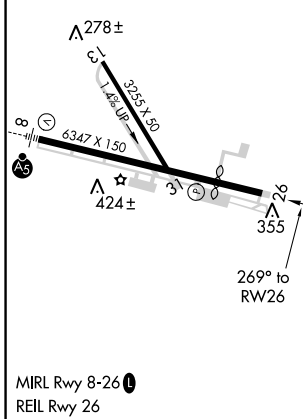
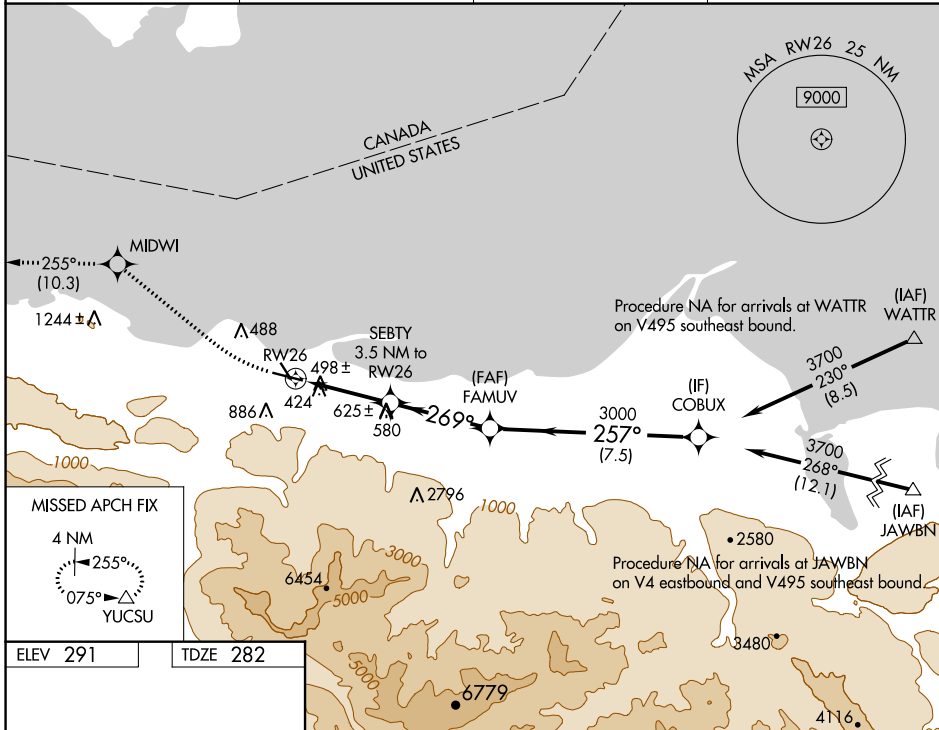


WAAS CH 90338 W26A	APP CRS 269°	Rwy Idg TDZE Apt Elev	4993 282 291
--	------------------------	-----------------------------	---

RNAV (GPS) RWY 26

WILLIAM R FAIRCHILD INTL (CLM)

RNP APCH.		MISSED APPROACH: Climbing right turn to 4000 direct MIDWI and on track 255° to YUCSU and hold.	
<p>▼ Circling NA south of Rwy 8-26. ▲ Circling Rwy 13, 31 NA at night. Rwy 26 helicopter visibility reduction below ¾ SM NA.</p>		ASOS 135.175	WHIDBEY APP CON 118.2 285.65
		CLNC DEL 124.15	UNICOM 122.975 (CTAF) 1



CATEGORY		A	B	C	D
LP	MDA	760-1	478 (500-1)	760-1¾	478 (500-1¾)
LN	MDA	920-1	638 (700-1)	920-1¾	638 (700-1¾)
C	CIRCLING	920-1	629 (700-1)	920-1¾ 629 (700-1¾)	1000-2¼ 709 (800-2¼)

NW-1, 27 JAN 2022 to 24 FEB 2022

NW-1, 27 JAN 2022 to 24 FEB 2022