

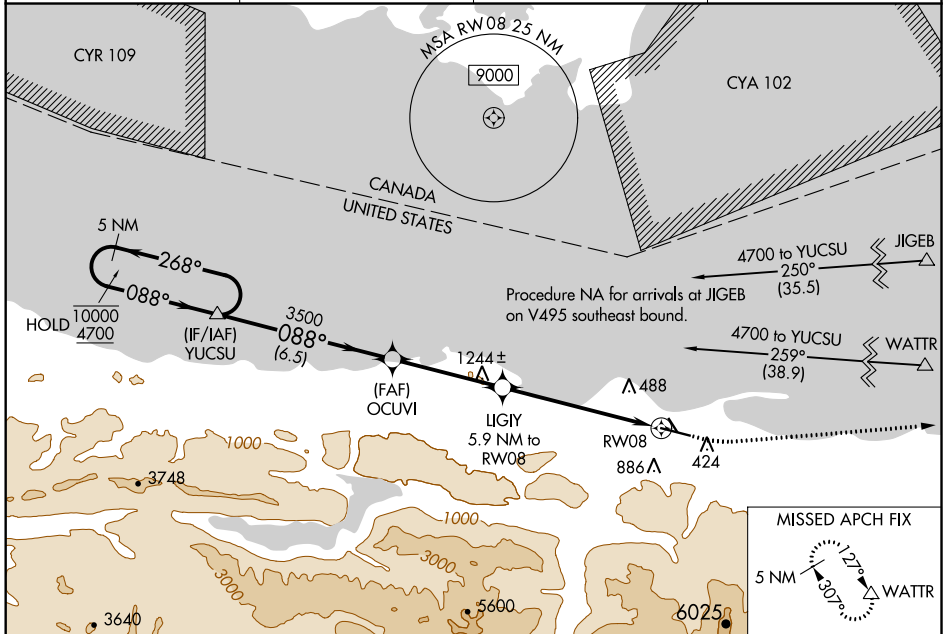
WAAS CH 77703 W08A	APP CRS 088°	Rwy Idg TDZE Apt Elev	6347 285 291
--	------------------------	-----------------------------	---

RNAV (GPS) RWY 8

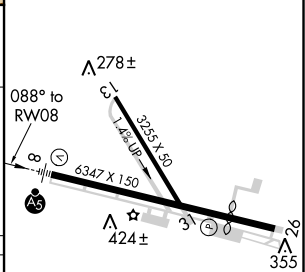
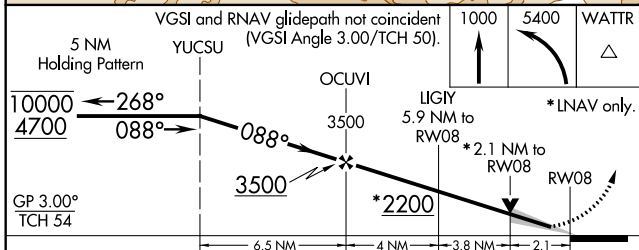
WILLIAM R FAIRCHILD INTL (CLM)

RNP APCH.	MALSRL	MISSED APPROACH: Climb to 1000 then climbing left turn to 5400 direct WATTR and hold, continue climb-in-hold to 5400.
<p>Baro-VNAV NA. For inop ALS, increase LNAV/VNAV all Cats visibility to 1 3/8 SM, and LNAV Cat C/D visibility to 1 7/8 SM. Night Landing: Rwy 13, 31 NA. Circling NA south of Rwy 8-26.</p>		

ASOS 135.175	WHIDBEY APP CON 118.2 285.65	CLNC DEL 124.15	UNICOM 122.975 (CTAF) 0
------------------------	--	---------------------------	-----------------------------------



ELEV 291	TDZE 285
----------	----------



CATEGORY	A	B	C	D
LPV DA		505-1/2	220 (300-1/2)	
LNAV/VNAV DA		757-1 1/8	472 (500-1 1/8)	
LNAV MDA	960-1/2	675 (700-1/2)	960-1 1/2	675 (700-1 1/2)
CIRCLING	960-1	669 (700-1)	960-1 7/8 669 (700-1 7/8)	1000-2 1/4 709 (800-2 1/4)

MIRL Rwy 8-26 0
REIL Rwy 26

NW-1, 27 JAN 2022 to 24 FEB 2022

NW-1, 27 JAN 2022 to 24 FEB 2022