
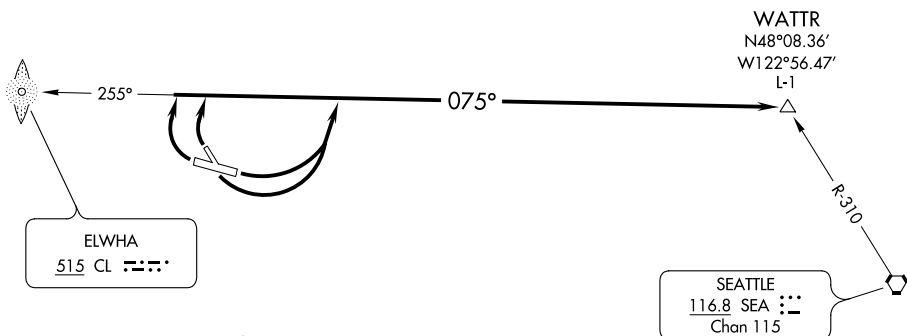


WATTR SEVEN DEPARTURE (OBSTACLE)

WHIDBEY DEP CON
118.2 285.65
SEATTLE RADIO
122.6
CTAF
122.975

VICTORIA
113.7 YYJ 
Chan 84
N48°43.62'-W123°29.06'
L-1, H-1



NOTE: ADF required.

TAKEOFF MINIMUMS

Rwy 8: 300-1.

Rwy 13: Standard with minimum climb of 475' per NM to 1100, or 3300-3 for VCOA.

Rwys 26, 31: Standard.

NOTE: Chart not to scale.

DEPARTURE ROUTE DESCRIPTION

TAKEOFF RUNWAYS 8, 13: Climbing left turn, thence. . . .

TAKEOFF RUNWAYS 26, 31: Climbing right turn, thence. . . .

. . . .on 075° bearing from CL LOM to WATTR INT. Maintain 5400.

VCOA RUNWAY 13: Obtain ATC approval for VCOA when requesting IFR clearance. Climb in visual conditions to cross William R Fairchild Intl Airport at or above 3400, then on heading 045°, continue climb to 5400 on 075° bearing from CL LOM to WATTR INT. Maintain 5400.

WATTR SEVEN DEPARTURE (OBSTACLE)