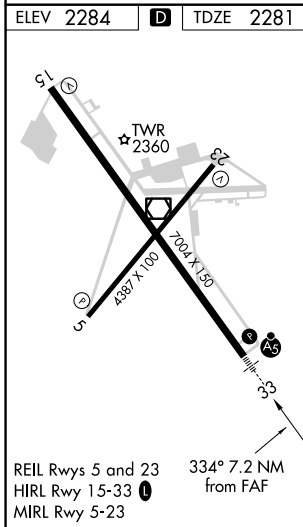
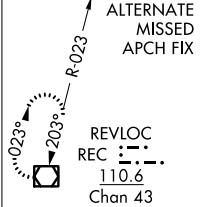
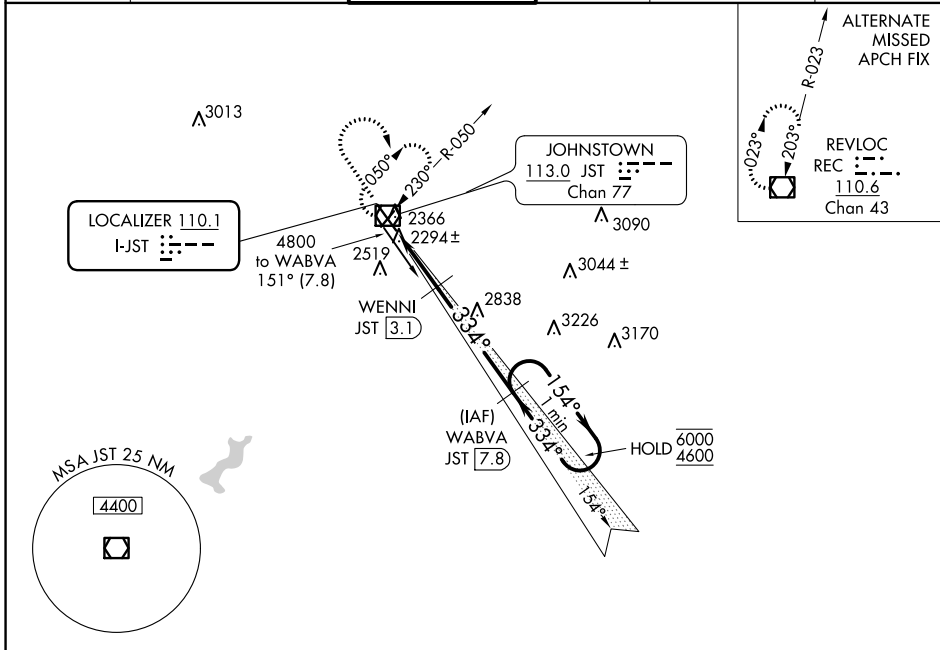


LOC I-JST 110.1	APP CRS 334°	Rwy Idg TDZE Apt Elev	7003 2281 2284
---------------------------	------------------------	-----------------------------	---

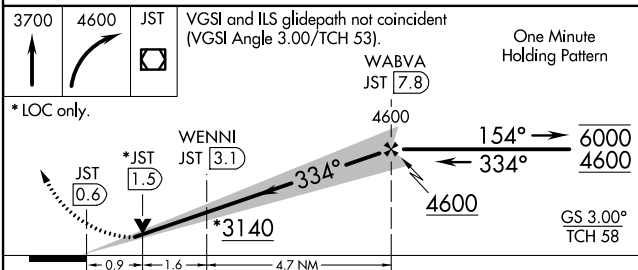
ILS or LOC RWY 33

JOHN MURTHA JOHNSTOWN/CAMBRIA COUNTY (JST)

DME required. ▼ Glide slope unusable beyond 5 degrees left of course. ▲ For inop ALS, increase S-LOC 33 Cat C/D visibility to ¾ SM.		MALSR 	MISSED APPROACH: Climb to 3700 then climbing right turn to 4600 direct JST VOR/DME and hold, continue climb-in-hold to 4600.		
ATIS 118.325	JOHNSTOWN APP CON ★ 121.2 299.2	JOHNSTOWN TOWER ★ 125.75 (CTAF)	GND CON 121.6	CLNC DEL 126.85 235.775	UNICOM 122.95



ELEV 2284	D	TDZE 2281
-----------	----------	-----------



WENNI JST 3.1	WABVA JST 7.8	6000	4600
334°	154°	6000	4600
0.9	1.6	4.7 NM	
JST 0.6	*JST 1.5		
	*3140		GS 3.00° TCH 58

CATEGORY	A	B	C	D
S-ILS 33	2481-½ 200 (200-½)			
S-LOC 33	2600-½ 319 (400-½)			
C CIRCLING	2700-1 416 (500-1)	2880-1 596 (600-1)	2880-1½ 596 (600-1½)	3000-2¼ 716 (800-2¼)

ILS or LOC RWY 33

NE-4, 27 JAN 2022 to 24 FEB 2022

NE-4, 27 JAN 2022 to 24 FEB 2022