

(LILLI4.LILLI) 22027

LILLI FOUR DEPARTURE

JOHN MURTHA JOHNSTOWN/CAMBRIA COUNTY (JST)
AL-898 (FAA) JOHNSTOWN, PENNSYLVANIA

ATIS 118.325
CLNC DEL
126.85 235.775
GND CON
121.6
JOHNSTOWN TOWER ★
125.75 (CTAF)
JOHNSTOWN DEP CON ★
121.2 299.2

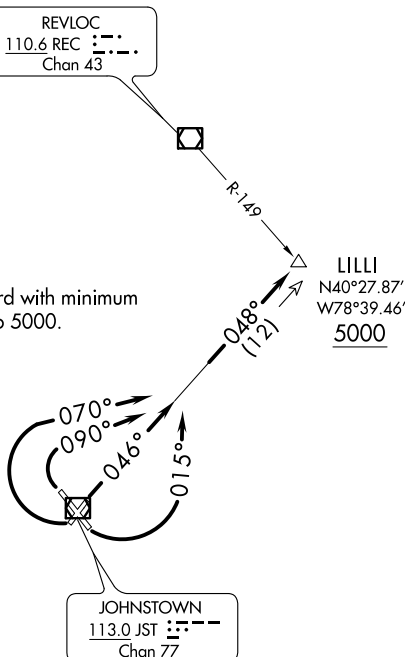
**TOP ALTITUDE:
ASSIGNED BY ATC**

TAKEOFF MINIMUMS:
Rwys 5, 15, 23, 33: Standard with minimum
ATC climb of 235' per NM to 5000.

LILLI
N40°27.87'
W78°39.46'
5000

REVLOC
110.6 REC :---:
Chan 43

JOHNSTOWN
113.0 JST :---:
Chan 77



NOTE: During VFR conditions
watch for opposing traffic
on JST R-048.

NOTE: Chart not to scale.



DEPARTURE ROUTE DESCRIPTION

TAKEOFF RUNWAY 5: Climb heading 046° to intercept JST R-048, Thence....

TAKEOFF RUNWAY 15: Turn left heading 015° to intercept JST R-048, Thence....

TAKEOFF RUNWAY 23: Turn right heading 070° to intercept JST R-048, Thence....

TAKEOFF RUNWAY 33: Turn right heading 090° to intercept JST R-048, Thence....

....via JST R-048 to cross LILLI INT at or above 5000 thence via (assigned route).

LILLI FOUR DEPARTURE

(LILLI4.LILLI) 21JUL16

JOHNSTOWN, PENNSYLVANIA
JOHN MURTHA JOHNSTOWN/CAMBRIA COUNTY (JST)

NE-4, 27 JAN 2022 to 24 FEB 2022

NE-4, 27 JAN 2022 to 24 FEB 2022