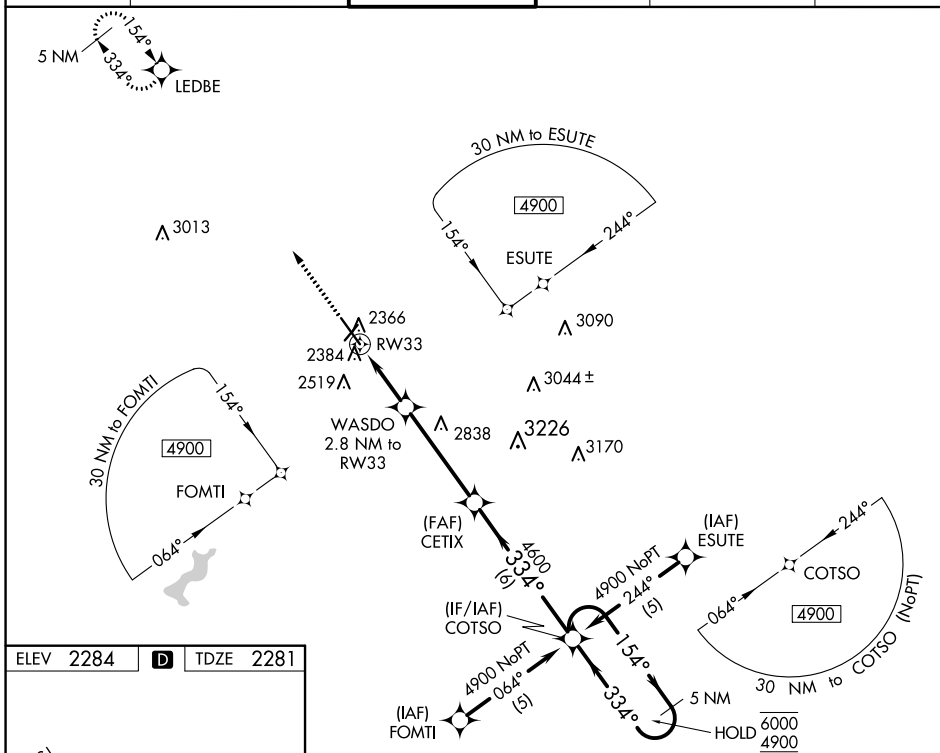


WAAS CH <b>61113</b> <b>W33A</b>	APP CRS <b>334°</b>	Rwy Idg TDZE <b>2003</b> 2281 Apt Elev <b>2284</b>
--	------------------------	---

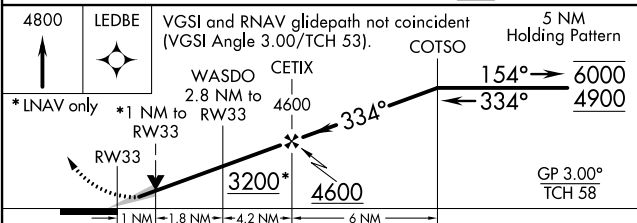
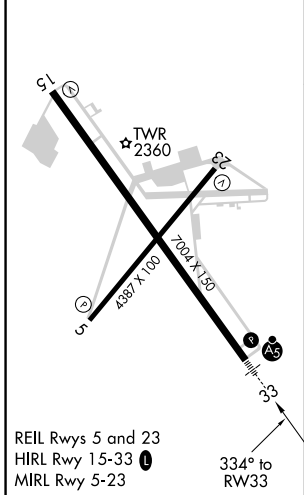
# RNAV (GPS) RWY 33

JOHN MURTHA JOHNSTOWN/CAMBRIA COUNTY (JST)

RNP APCH.		MALSR		MISSED APPROACH: Climb to 4800 direct LEDBE and hold.	
<p>▼ Inop table does not apply to LNAV Cat D. For uncompensated Baro-VNAV systems, LNAV/VNAV NA below -19°C or above 54°C. For inop ALS increase LNAV/VNAV all Cats visibility to ½ SM and LNAV Cat C visibility to 1 SM.</p>					
ATIS <b>118.325</b>	JOHNSTOWN APP CON ★ <b>121.2 299.2</b>	JOHNSTOWN TOWER ★ <b>125.75 (CTAF) 0</b>	GND CON <b>121.6</b>	CLNC DEL <b>126.85 235.775</b>	UNICOM <b>122.95</b>



ELEV 2284	<b>D</b>	TDZE 2281
-----------	----------	-----------



CATEGORY	A	B	C	D
LPV DA	2481-½		200 (200-½)	
LNAV/VNAV DA	2552-½		271 (300-½)	2552-¾ 271 (300-¾)
LNAV MDA	2640-½	359 (400-½)	2640-⅝ 359 (400-⅝)	2640-1 359 (400-1)
<b>C</b> CIRCLING	2700-1 416 (500-1)	2880-1 596 (600-1)	2880-1½ 596 (600-½)	3000-2¼ 716 (800-2¼)

# RNAV (GPS) RWY 33

NE-4, 27 JAN 2022 to 24 FEB 2022

NE-4, 27 JAN 2022 to 24 FEB 2022