

VOR/DME JST 113.0 Chan 77	APP CRS 042°	Rwy Idg TDZE Apt Elev 4386 2284 2284
---	------------------------	--

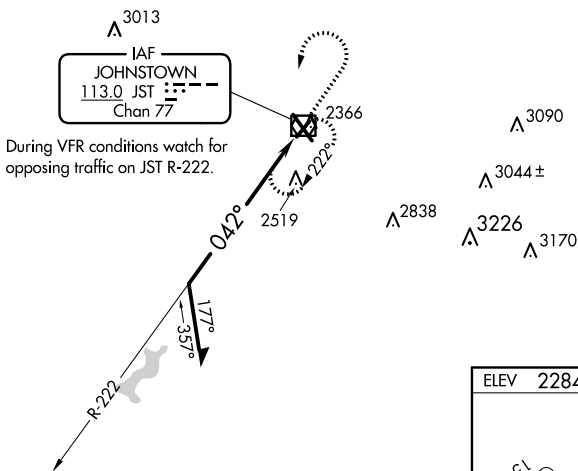
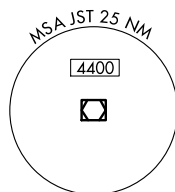
VOR RWY 5

JOHN MURTHA JOHNSTOWN/CAMBRIA COUNTY (JST)

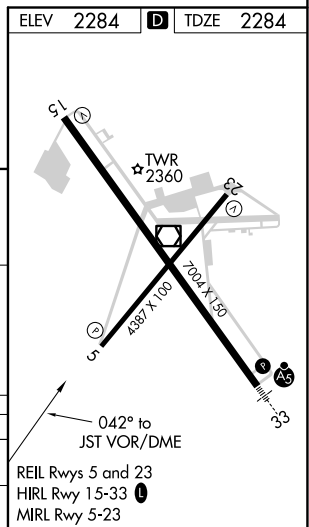
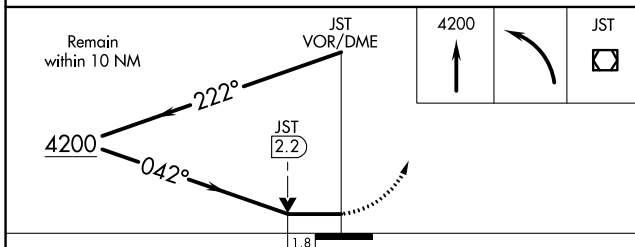
⚠ Rwy 5 helicopter visibility reduction below $\frac{3}{4}$ SM NA.

MISSED APPROACH: Climb to 4200 then left turn direct JST VOR/DME and hold.

ATIS 118.325	JOHNSTOWN APP CON * 121.2 299.2	JOHNSTOWN TOWER * 125.75 (CTAF) 0	GND CON 121.6	CLNC DEL 126.85 235.775	UNICOM 122.95
------------------------	---	--	-------------------------	-----------------------------------	-------------------------



ELEV 2284	D	TDZE 2284
-----------	----------	-----------



CATEGORY	A	B	C	D
S-5	2880-1 596 (600-1)		2880-1 $\frac{3}{4}$ 596 (600-1 $\frac{3}{4}$)	
C CIRCLING	2880-1 596 (600-1)		2880-1 $\frac{3}{4}$ 596 (600-1 $\frac{3}{4}$)	3000-2 $\frac{1}{4}$ 716 (800-2 $\frac{1}{4}$)

REIL Rwy 5 and 23
HIRL Rwy 15-33 **1**
MIRL Rwy 5-23

VOR RWY 5

NE-4, 27 JAN 2022 to 24 FEB 2022

NE-4, 27 JAN 2022 to 24 FEB 2022