

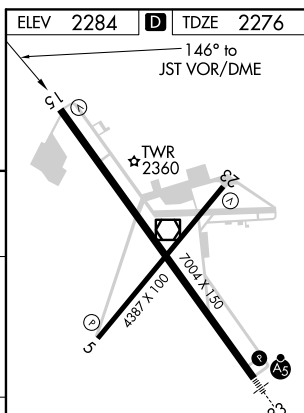
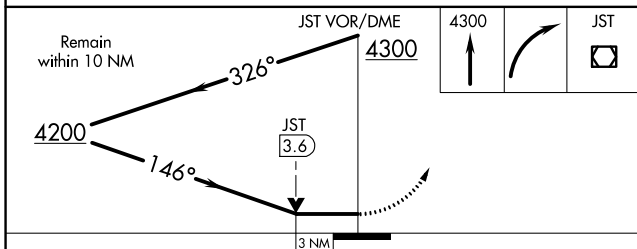
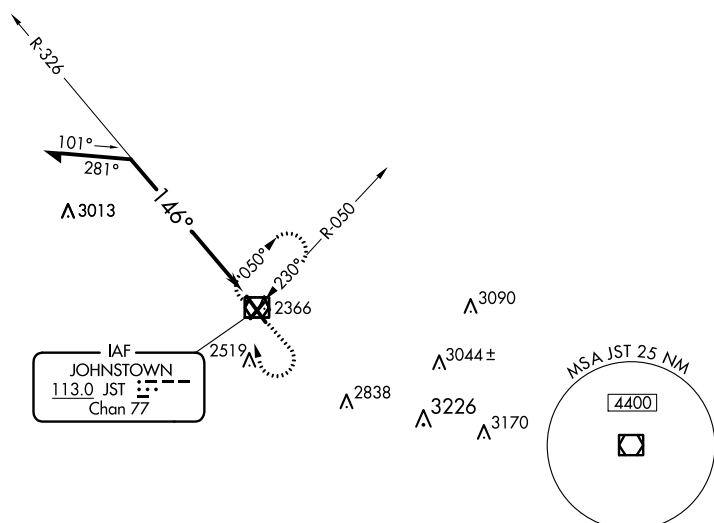
VOR/DME JST <b>113.0</b> Chan <b>77</b>	APP CRS <b>146°</b>	Rwy Idg TDZE Apt Elev	<b>7003</b> <b>2276</b> <b>2284</b>
---	------------------------	-----------------------------	---

# VOR Y RWY 15

JOHN MURTHA JOHNSTOWN/CAMBRIA COUNTY (JST)

**⚠** MISSED APPROACH: Climb to 4300 then right turn direct JST VOR/DME and hold.

ATIS <b>118.325</b>	JOHNSTOWN APP CON * <b>121.2 299.2</b>	JOHNSTOWN TOWER * <b>125.75 (CTAF)</b> <b>0</b>	GND CON <b>121.6</b>	CLNC DEL <b>126.85 235.775</b>	UNICOM <b>122.95</b>
------------------------	---	--	-------------------------	-----------------------------------	-------------------------



CATEGORY	A	B	C	D
S-15	3300-1¼ 1024 (1100-1¼)	3300-1½ 1024 (1100-1½)	3300-3	1024 (1100-3)
<b>C</b> CIRCLING	3300-1¼ 1016 (1100-1¼)	3300-1½ 1016 (1100-1½)	3300-3	1016 (1100-3)

REIL Rwys 5 and 23  
HIRL Rwy 15-33 **0**  
MIRL Rwy 5-23

# VOR Y RWY 15

NE-4, 27 JAN 2022 to 24 FEB 2022

NE-4, 27 JAN 2022 to 24 FEB 2022