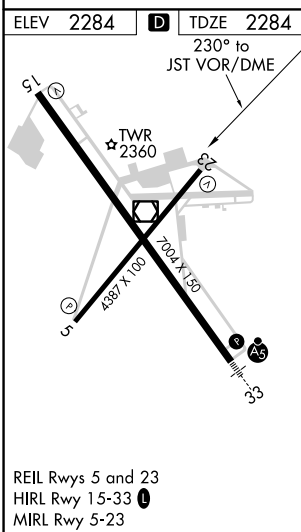
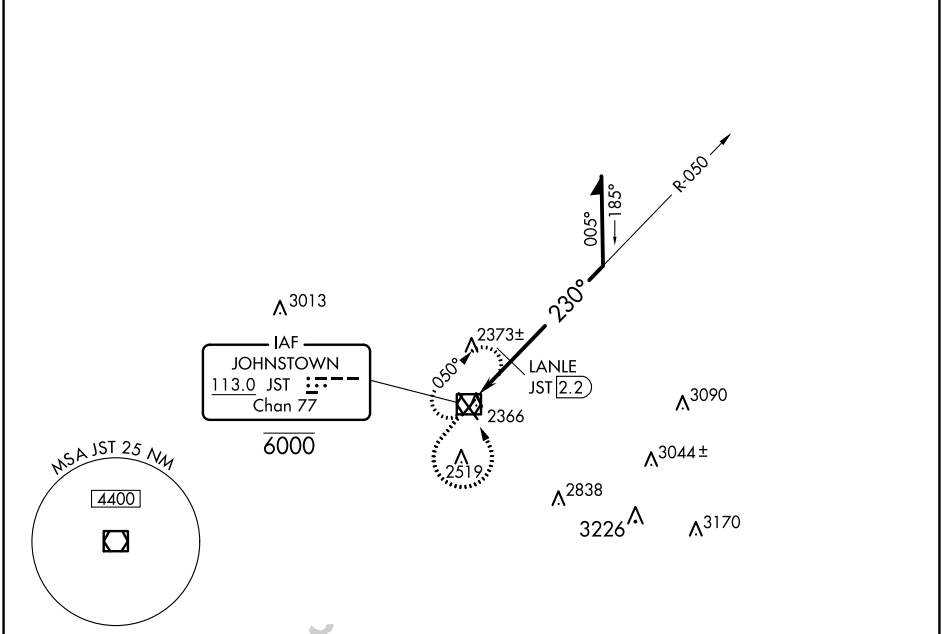


VOR/DME JST 113.0 Chan 77	APP CRS 230°	Rwy Idg TDZE Apt Elev	4386 2284 2284
---	------------------------	-----------------------------	---

VOR Y RWY 23

JOHN MURTHA JOHNSTOWN/CAMBRIA COUNTY (JST)

Rwy 23 helicopter visibility reduction below 3/4 SM NA.		MISSED APPROACH: Climb to 4200 then left turn direct JST VOR/DME and hold.			
ATIS 118.325	JOHNSTOWN APP CON * 121.2 299.2	JOHNSTOWN TOWER * 125.75 (CTAF) 0	GND CON 121.6	CLNC DEL 126.85 235.775	UNICOM 122.95



ELEV 2284	TDZE 2284	4200		JST VOR/DME 6000	Remain within 10 NM
				050° LANLE JST [2.2] 2920 230° 3800 JST [1.3] 2.98° TCH 45 1.1 ← 0.8 NM	
CATEGORY	A	B	C	D	
S-23	2920-1	636 (700-1)	2920-1¾ 636 (700-1¾)	2920-2 636 (700-2)	
CIRCLING	2920-1	636 (700-1)	2920-1¾ 636 (700-1¾)	3000-2¼ 716 (800-2¼)	
LANLE FIX MINIMUMS					
S-23	2660-1 376 (400-1)		2660-1¼ 376 (400-1¼)		
CIRCLING	2700-1 416 (500-1)	2880-1 596 (600-1)	2880-1½ 596 (600-1½)	3000-2¼ 716 (800-2¼)	

VOR Y RWY 23

NE-4, 27 JAN 2022 to 24 FEB 2022

NE-4, 27 JAN 2022 to 24 FEB 2022