

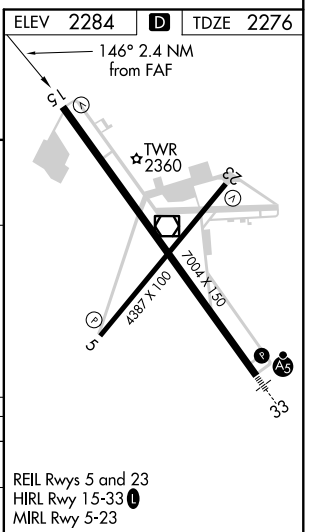
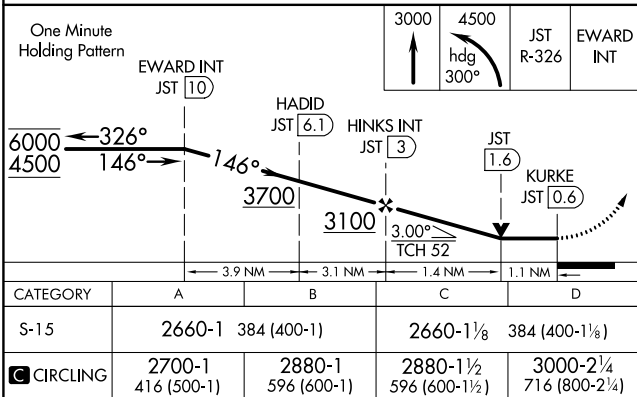
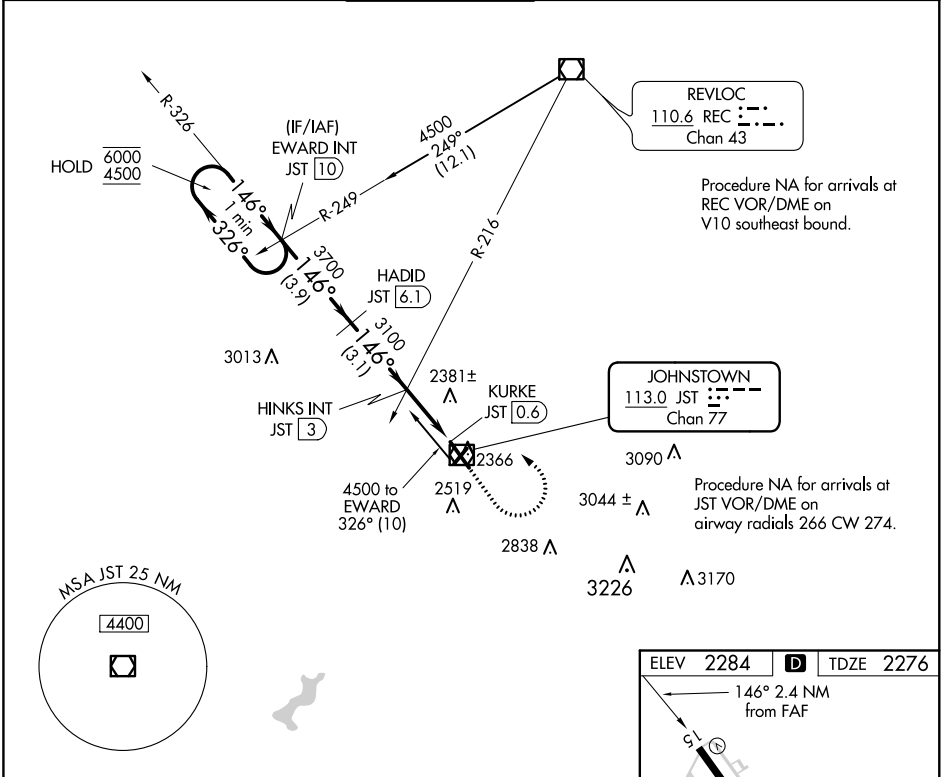
VOR/DME JST 113.0 Chan 77	APP CRS 146°	Rwy Idg TDZE Apt Elev 7003 2276 2284
--	------------------------	--

VOR Z RWY 15

JOHN MURTHA JOHNSTOWN/CAMBRIA COUNTY (JST)

DME required.		MISSED APPROACH: Climb to 3000 then climbing left turn to 4500 on heading 300° and JST VOR/DME R-326 to EWARD INT/JST 10 DME and hold.			
---------------	--	--	--	--	--

ATIS 118.325	JOHNSTOWN APP CON ★ 121.2 299.2	JOHNSTOWN TOWER ★ 125.75 (CTAF) 0	GND CON 121.6	CLNC DEL 126.85 235.775	UNICOM 122.95
------------------------	---	--	-------------------------	-----------------------------------	-------------------------



NE-4, 27 JAN 2022 to 24 FEB 2022

NE-4, 27 JAN 2022 to 24 FEB 2022

REIL Rwy 5 and 23
HIRL Rwy 15-33
MIRL Rwy 5-23