

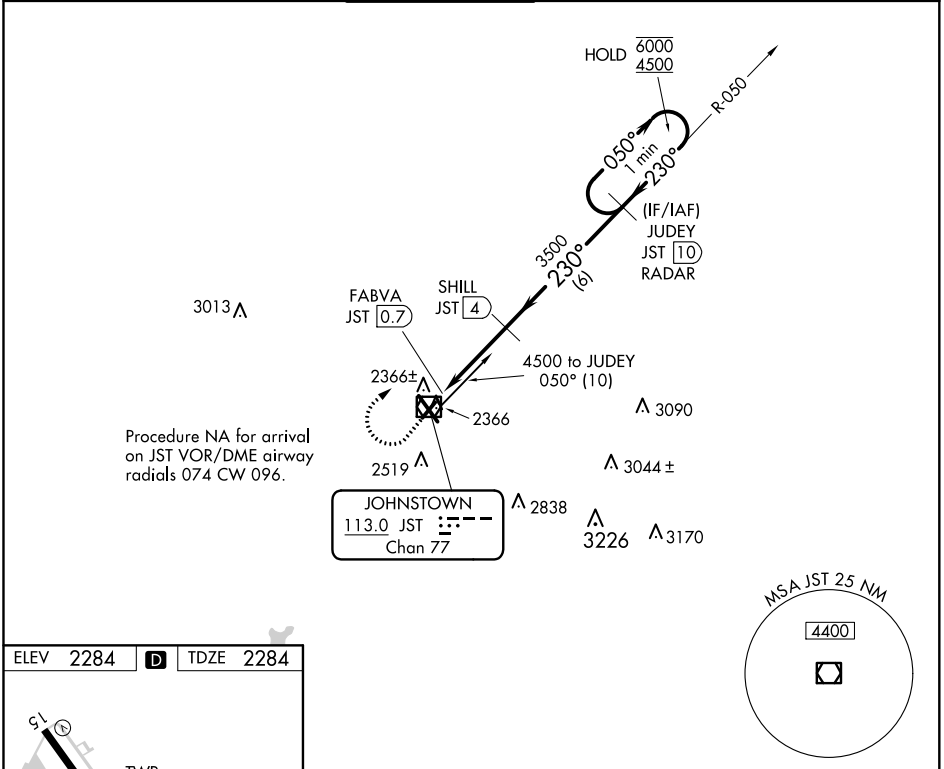
VOR/DME JST 113.0 Chan 77	APP CRS 230°	Rwy Idg TDZE Apt Elev 4386 2284 2284
---	------------------------	--

VOR Z RWY 23

JOHN MURTHA JOHNSTOWN/CAMBRIA COUNTY (JST)

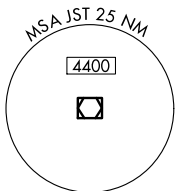
DME required.	MISSED APPROACH: Climb to 3000 then climbing right turn to 4500 on heading 075° and JST VOR/DME R-050 to JUDEY/JST 10 DME/RADAR and hold.
▼ ▲ Rwy 23 helicopter visibility reduction below ¼ SM NA.	

ATIS 118.325	JOHNSTOWN APP CON ★ 121.2 299.2	JOHNSTOWN TOWER ★ 125.75 (CTAF) 0	GND CON 121.6	CLNC DEL 126.85 235.775	UNICOM 122.95
------------------------	---	---	-------------------------	-----------------------------------	-------------------------

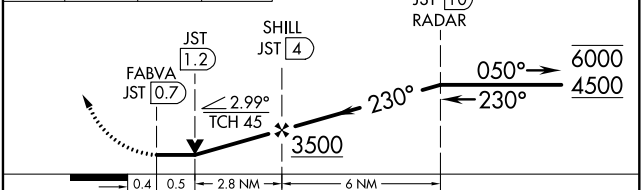
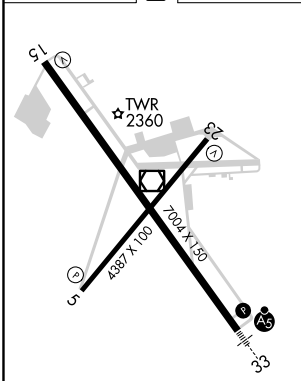


Procedure NA for arrival on JST VOR/DME airway radials 074 CW 096.

JOHNSTOWN 113.0 JST Chan 77



ELEV 2284	D	TDZE 2284
-----------	----------	-----------



CATEGORY	A	B	C	D
S-23	2620-1 336 (400-1)			
C CIRCLING	2700-1 416 (500-1)	2880-1 596 (600-1)	2880-1½ 596 (600-1½)	3000-2¼ 716 (800-2¼)

REIL Rwy 5 and 23
HIRL Rwy 15-33
MIRL Rwy 5-23

VOR Z RWY 23

NE-4, 27 JAN 2022 to 24 FEB 2022

NE-4, 27 JAN 2022 to 24 FEB 2022