

CONRA TWO DEPARTURE

AL-906 (FAA)

ROBERT GRAY AAF (GRK)
FORT HOOD/KILEEN, TEXAS

SC-3, 27 JAN 2022 to 24 FEB 2022

TOP ALTITUDE:
12000

- ATIS 124.9
- CLNC DEL 126.2 251.1
- GND CON 121.8 279.5
- GRAY TOWER 120.75 285.5
- GRAY DEP CON 120.075 323.15

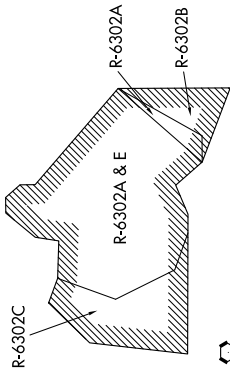


DEPARTURE ROUTE DESCRIPTION

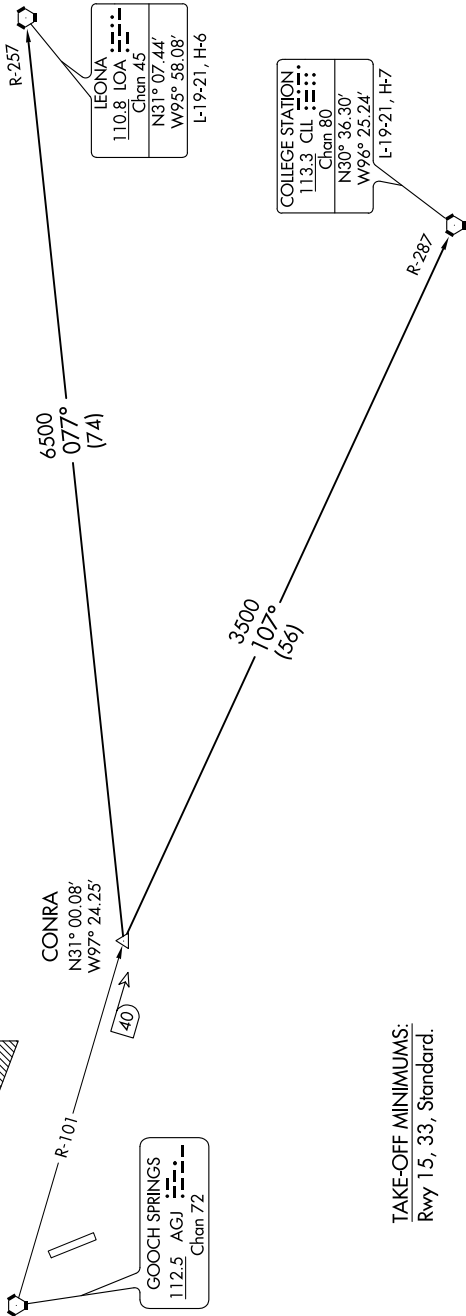
Climb on assigned heading for RADAR vectors to CONRA INT, maintain 3500. Thence

. . . . (transition). Expect filed altitude 10 minutes after departure.

COLLEGE STATION TRANSITION (CONRA2.CLI): From over CONRA INT via CLL R-287 to CLL VORTAC.
LEONA TRANSITION (CONRA2.LOA): From over CONRA INT via LOA R-257 to LOA VORTAC.



NOTE: RADAR required.



LEONA
110.8 LOA
Chan 45
N31° 07.44'
W95° 58.08'
L-19-21, H-6

COLLEGE STATION
113.3 CLL
Chan 80
N30° 36.30'
W96° 25.24'
L-19-21, H-7

GOOCH SPRINGS
112.5 AGJ
Chan 72

TAKE-OFF MINIMUMS:
Rwy 15, 33, Standard.

NOTE: Chart not to scale.

CONRA TWO DEPARTURE

(CONRA2.CONRA) 21JUL16

FORT HOOD/KILEEN, TEXAS
ROBERT GRAY AAF (GRK)

SC-3, 27 JAN 2022 to 24 FEB 2022