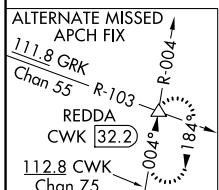
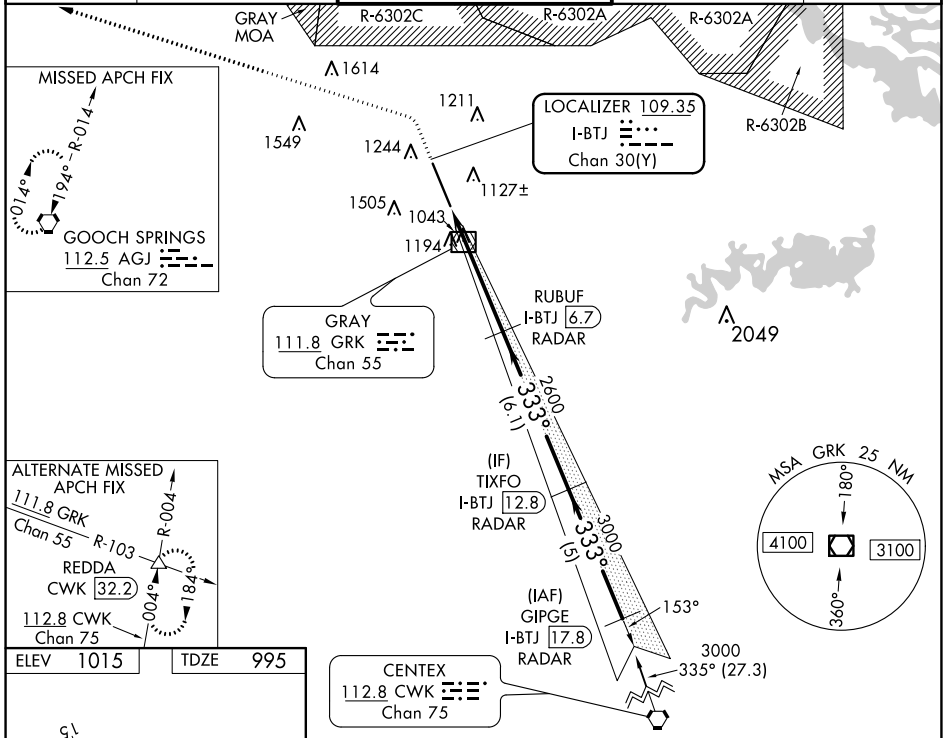


LOC/DME I-BTJ 109.35 Chan 30 (Y)	APP CRS 333°	Rwy Idg TDZE Apt Elev 9803 995 1015
-----------------------------------------------	------------------------	-------------------------------------------------------------------------

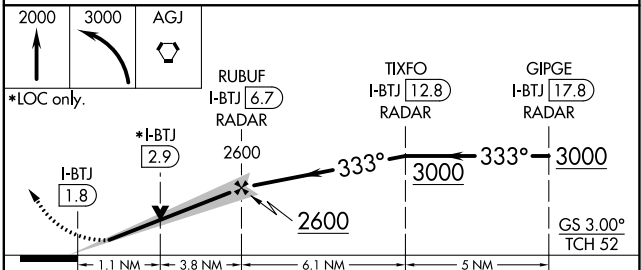
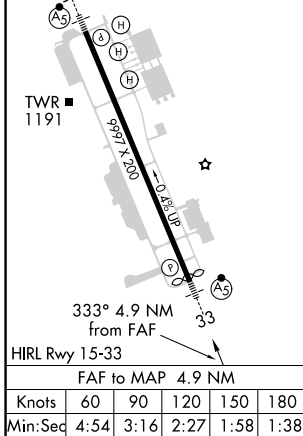
ILS or LOC RWY 33

ROBERT GRAY AAF (GRK)

DME or RADAR required.		MALS	MISSED APPROACH: Climb to 2000 then climbing left turn to 3000 direct AGJ VORTAC and hold.	
Circling NA west of Rwy 15-33. For inop ALS, increase S-ILS 33 Cat E visibility to 3/4 SM and S-LOC 33 Cat C/D/E visibility to 1 SM.				
ATIS 124.9	GRAY APP CON 120.075 323.15	GRAY TOWER 120.75 (CTAF) 285.5	GND CON 121.8 279.5	CLNC DEL 126.2 251.1



ELEV 1015	TDZE 995
-----------	----------



CATEGORY	A	B	C	D	E
S-ILS 33	1195-1/2 200 (200-1/2)				
S-LOC 33	1360-1/2	365 (400-1/2)	1360-3/4	365 (400-3/4)	
CIRCLING	1540-1	525 (600-1)	1560-1 1/2	1620-2	1740-2 1/2
			545 (600-1 1/2)	605 (700-2)	725 (800-2 1/2)

SC-3, 27 JAN 2022 to 24 FEB 2022

SC-3, 27 JAN 2022 to 24 FEB 2022