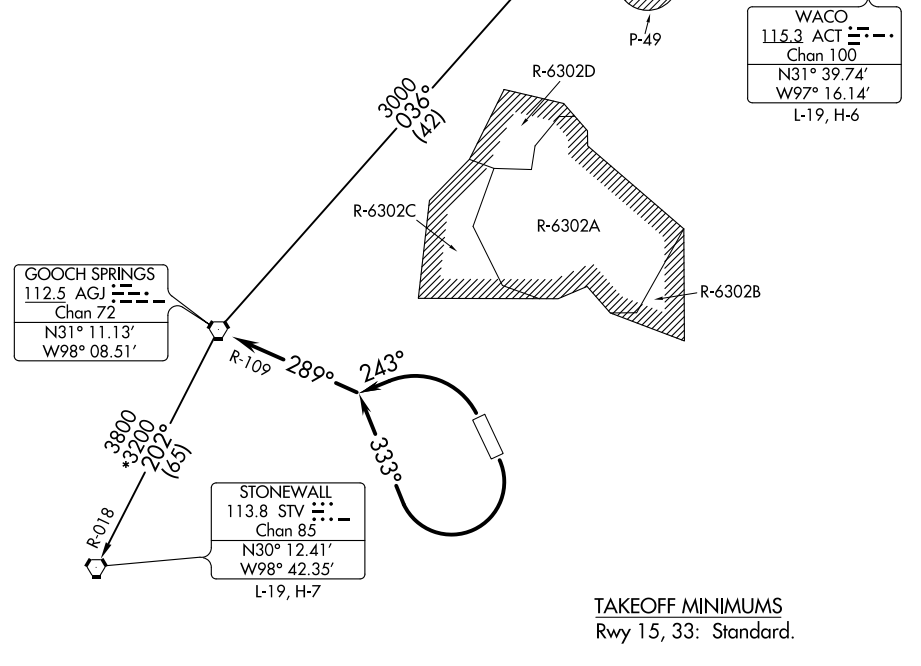


# LAMPS SEVEN DEPARTURE

ATIS  
124.9  
CLNC DEL  
126.2 251.1  
GND CON  
121.8 279.5  
GRAY TOWER  
120.75 285.5  
GRAY DEP CON  
120.075 323.15

**TOP ALTITUDE:  
ASSIGNED BY ATC**



SC-3, 27 JAN 2022 to 24 FEB 2022

SC-3, 27 JAN 2022 to 24 FEB 2022

NOTE: RADAR required.

NOTE: WACO TRANSITION for aircraft inbound to terminal area airports.

NOTE: Chart not to scale.

## DEPARTURE ROUTE DESCRIPTION

**TAKEOFF RWY 15:** Climbing right turn heading 333° (to assigned altitude) to intercept and proceed on AGJ R-109. Thence . . . .

**TAKEOFF RWY 33:** Climbing left turn heading 243° (to assigned altitude) to intercept and proceed on AGJ R-109. Thence . . . .

. . . . on (transition) or (assigned route).

**STONEWALL TRANSITION (LAMPS7.STV):** From over AGJ VORTAC on AGJ R-202 and STV R-018 to STV VORTAC.

**WACO TRANSITION (LAMPS7.ACT):** From over AGJ VORTAC on AGJ R-036 to SONET INT, then on ACT R-271 to ACT VORTAC.

# LAMPS SEVEN DEPARTURE

(LAMPS7.AGJ) 10OCT19