

WAAS CH 78099 W15A	APP CRS 153°	Rwy Idg TDZE Apt Elev	9997 1015 1015
--	------------------------	-----------------------------	---

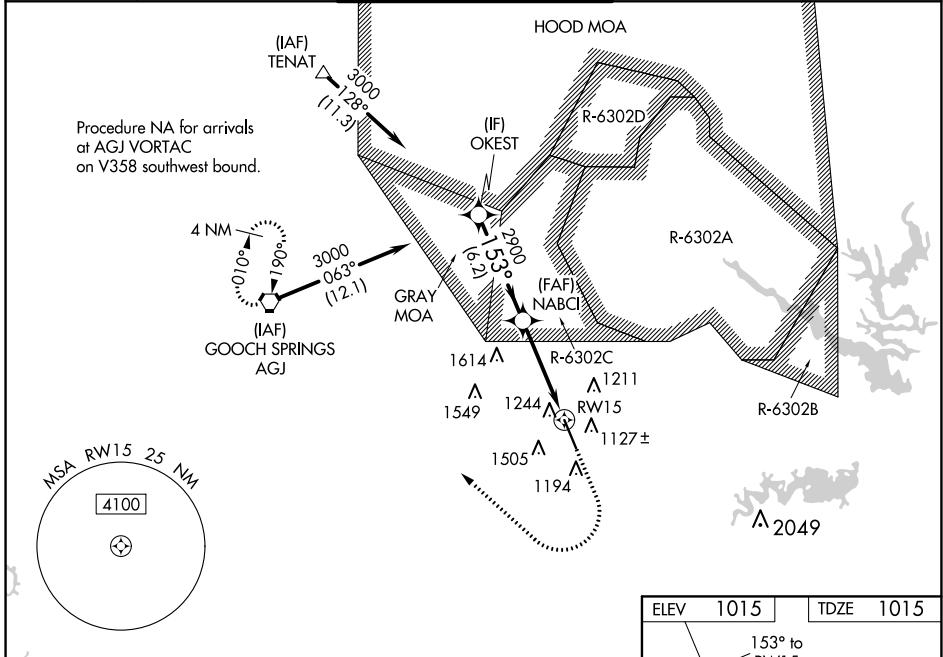
RNAV (GPS) RWY 15

ROBERT GRAY AAF (GRK)

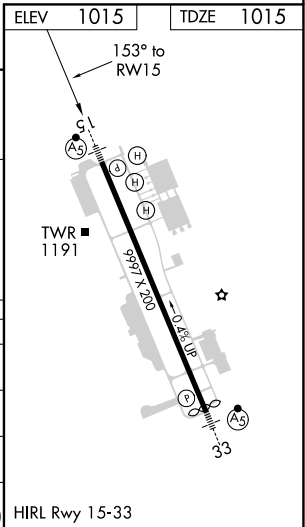
▼ For uncompensated Baro-VNAV systems, LNAV/VNAV NA below -17°C (2°F) or above 54°C (130°F).
▲ Circling NA west of Rwy 15-33. DME/DME RNP-0.3 NA.
ASR/PAR For inop ALS, increase LPV Cat E visibility to RVR 4000, LNAV/VNAV all Cats visibility to 1 3/8 SM and LNAV Cats C/D/E visibility to 1 3/8 SM.
RVR 1800 authorized with the use of FD or AP or HUD to DA.

MALS R MISSED APPROACH: Climb to 2000 then climbing right turn to 3000 direct AGJ VORTAC and hold.

ATIS 124.9	GRAY APP CON 120.075 323.15	GRAY TOWER 120.75 285.5	GND CON 121.8 279.5	CLNC DEL 126.2 251.1
----------------------	---------------------------------------	-----------------------------------	-------------------------------	--------------------------------



VGSi and RNAV glidepath not coincident (VGSi Angle 3.00/TCH 53).					
OKEST	NABCI		2000	3000	AGJ
3000	2900		↑	↷	⬡
153°		*1.4 NM to RWY 15		*LNAV only.	
GP 3.00° TCH 53	2900		RWY 15		
6.2 NM		4.4 NM		1.4 NM	
CATEGORY	A	B	C	D	E
LPV DA #	1215/24		200 (200-1/2)		
LNAV/VNAV DA	1531/55		516 (600-1)		
LNAV MDA	1520/24 505 (600-1/2)		1520/55 505 (600-1)		
C CIRCLING	1540-1 525 (600-1)		1560-1 1/2 545 (600-1 1/2)		1620-2 605 (700-2) 1740-2 1/2 725 (800-2 1/2)



SC-3, 27 JAN 2022 to 24 FEB 2022

SC-3, 27 JAN 2022 to 24 FEB 2022