

WAAS CH <b>82399</b> <b>W33A</b>	APP CRS <b>333°</b>	Rwy Idg TDZE Apt Elev	<b>9803</b> <b>995</b> <b>1015</b>
--	------------------------	-----------------------------	--

# RNAV (GPS) RWY 33

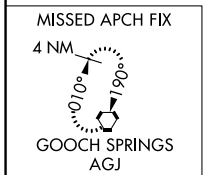
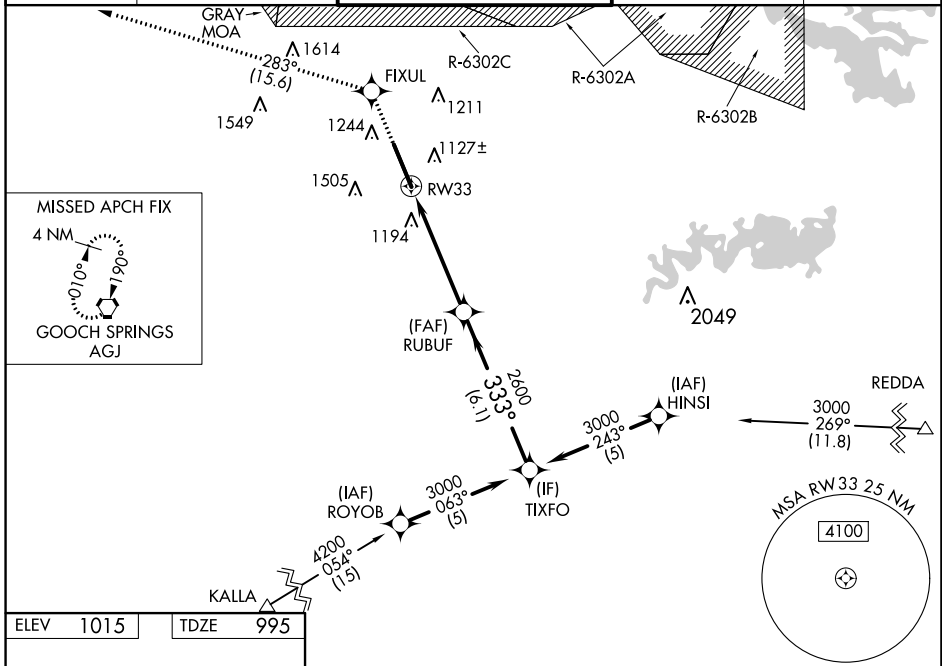
ROBERT GRAY AAF (GRK)

**▲** For uncompensated Baro-VNAV systems, LNAV/VNAV NA below -17°C (2°F) or above 54°C (130°F). Circling NA west of Rwy 15-33. DME/DME RNP-0.3 NA. For inoperative ALS, increase LPV Cat E visibility to ¾ SM, LNAV/VNAV Cat E visibility to 2 SM, and LNAV Cat E visibility to 1½ SM.

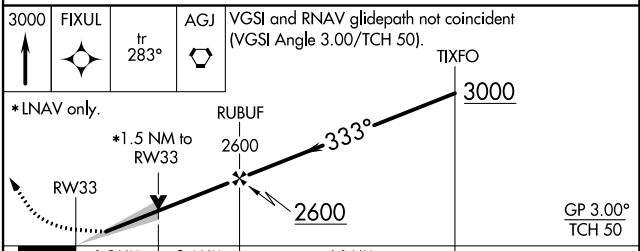
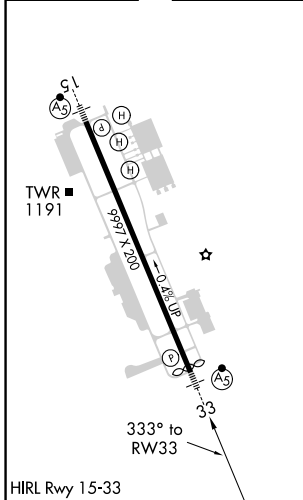
**▲** ASR/PAR

**MALS** MISSED APPROACH: Climb to 3000 direct FIXUL and on track 283° to AGJ VORTAC and hold.

ATIS <b>124.9</b>	GRAY APP CON <b>120.75 323.15</b>	GRAY TOWER <b>120.75 285.5</b>	GND CON <b>121.8 279.5</b>	CLNC DEL <b>126.2 251.1</b>
----------------------	--------------------------------------	-----------------------------------	-------------------------------	--------------------------------



ELEV 1015	TDZE 995
-----------	----------



CATEGORY	A	B	C	D	E
LPV DA	1195-½		200 (200-½)		
LNAV/VNAV DA	1552-½		557 (600-1½)		
LNAV MDA	1460-½	465 (500-½)	1460-1	465 (500-1)	
<b>C</b> CIRCLING	1540-1	525 (600-1)	1560-1½ 545 (600-1½)	1620-2 605 (700-2)	1740-2½ 725 (800-2½)

SC-3, 27 JAN 2022 to 24 FEB 2022

SC-3, 27 JAN 2022 to 24 FEB 2022