

VOR/DME GRK	APP CRS	Rwy Idg TDZE	9997
111.8	152°	Apt Elev	1015
Chan 55			1015

# VOR/DME RWY 15

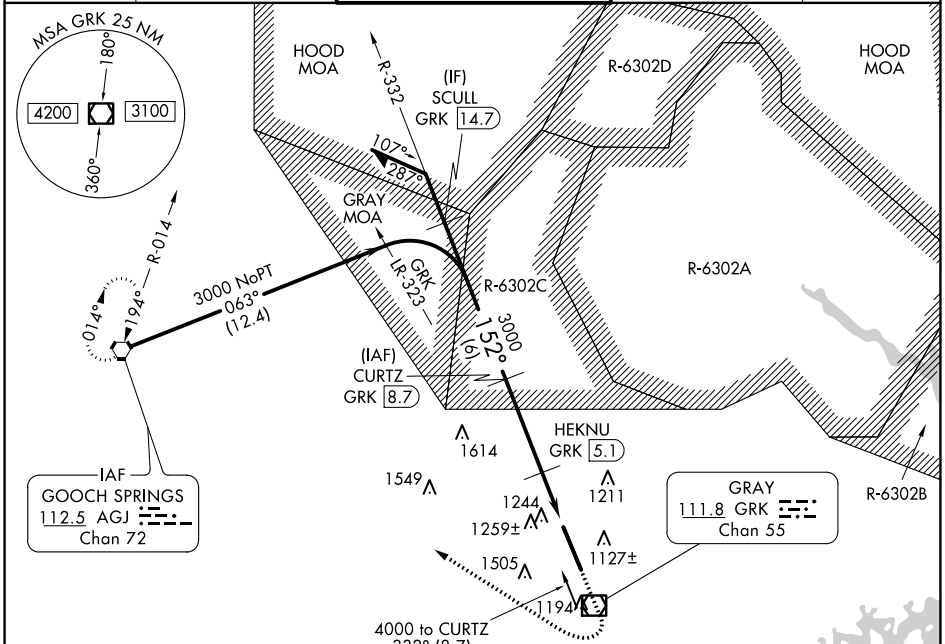
ROBERT GRAY AAF (GRK)

**NA** Circling NA W of Rwy 15-33. For inoperative MALSR, increase S-15 Cat E visibility 1/2 mile.

**MALSR**

**MISSED APPROACH:** Climb to 2000 then climbing right turn to 3000 direct AGJ VORTAC and hold.

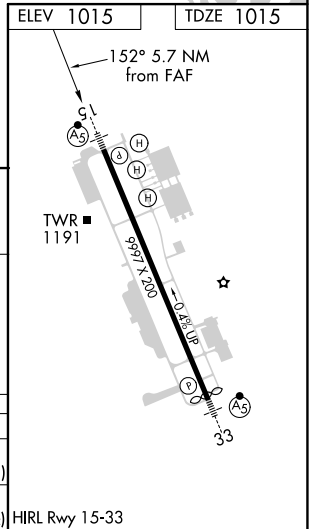
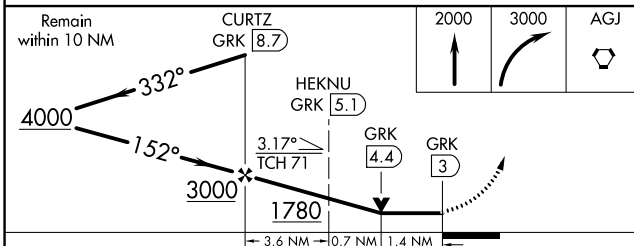
ATIS	GRAY APP CON	GRAY TOWER	GND CON	CLNC DEL
124.9	120.075 323.15	120.75 285.5	121.8 279.5	126.2 251.1



**IAF GOOCH SPRINGS 112.5 AGJ Chan 72**

**A 1616±**

Cat E procedure turn not authorized.



CATEGORY	A	B	C	D	E
S-15	1520/24 505 (600-1/2)		1520/50 505 (600-1)		1520/60 505 (600-1 1/4)
<b>CIRCLING</b>	1540-1 525 (600-1)		1560-1 1/2 545 (600-1 1/2)	1620-2 605 (700-2)	1740-2 1/2 725 (800-2 1/2)

HIRL Rwy 15-33

SC-3, 27 JAN 2022 to 24 FEB 2022

SC-3, 27 JAN 2022 to 24 FEB 2022