

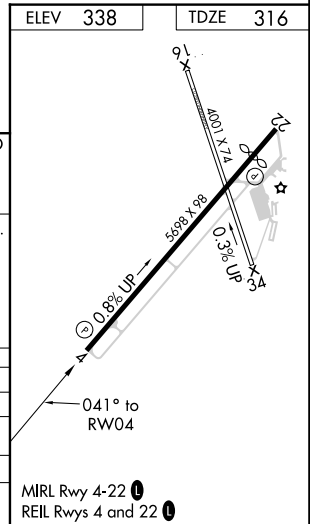
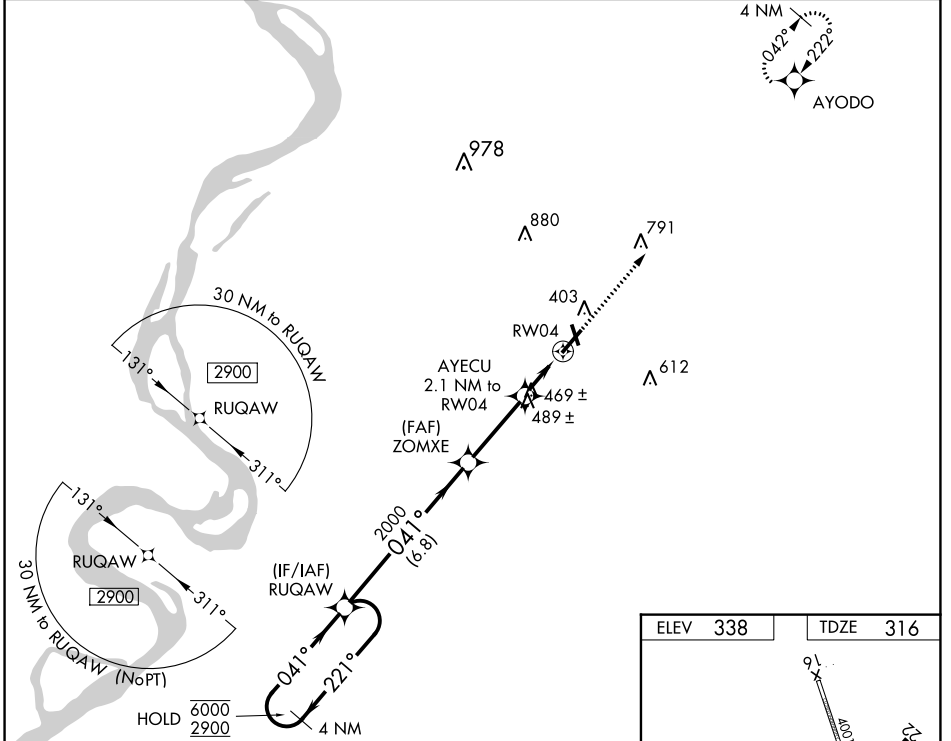
WAAS CH <b>82320</b> <b>W04A</b>	APP CRS <b>041°</b>	Rwy ldg TDZE Apt Elev	<b>5698</b> <b>316</b> <b>338</b>
----------------------------------------	------------------------	-----------------------------	-----------------------------------------

# RNAV (GPS) RWY 4

DYERSBURG RGNL (DYR)

RNP APCH.	MISSED APPROACH: Climb to 2900 direct AYODO and hold.
<p>▼ Circling to Rwy 16, 34 NA at night. Rwy 4 helicopter visibility reduction below 3/4 SM NA. For uncompensated Baro-VNAV systems, LNAV/VNAV NA below -15°C or above 54°C.</p>	

AWOS-3PT <b>135.625</b>	MEMPHIS CENTER <b>134.65 316.15</b>	UNICOM <b>123.05 (CTAF) 0</b>
----------------------------	----------------------------------------	----------------------------------



4 NM Holding Pattern RUCAW

VGSI and RNAV glidepath not coincident (VGSI Angle 3.00/TCH 35).

6000 2900	← 221°	→ 041°	041°	2000	2000	2000	2900	AYODO
GP 3.00°				*1000	*1.2 NM to RW04	*LNAV only.		
TCH 40				6.8 NM	3.1 NM	0.9 NM	1.2 NM	

CATEGORY	A	B	C	D
LPV DA	588-1		272 (300-1)	
LNAV/VNAV DA	801-1 3/8		485 (500-1 1/8)	
LNAV MDA	720-1 404 (400-1)		720-1 1/8 404 (400-1 1/8)	
CIRCLING	740-1 402 (500-1)	800-1 462 (500-1)	1040-2 702 (800-2)	1240-3 902 (1000-3)

SE-1, 27 JAN 2022 to 24 FEB 2022

SE-1, 27 JAN 2022 to 24 FEB 2022