

LOC I-AYS 108.3	APP CRS 184°	Rwy Idg TDZE Apt Elev	5992 140 141
---------------------------	------------------------	-----------------------------	---

ILS Y or LOC Y RWY 19

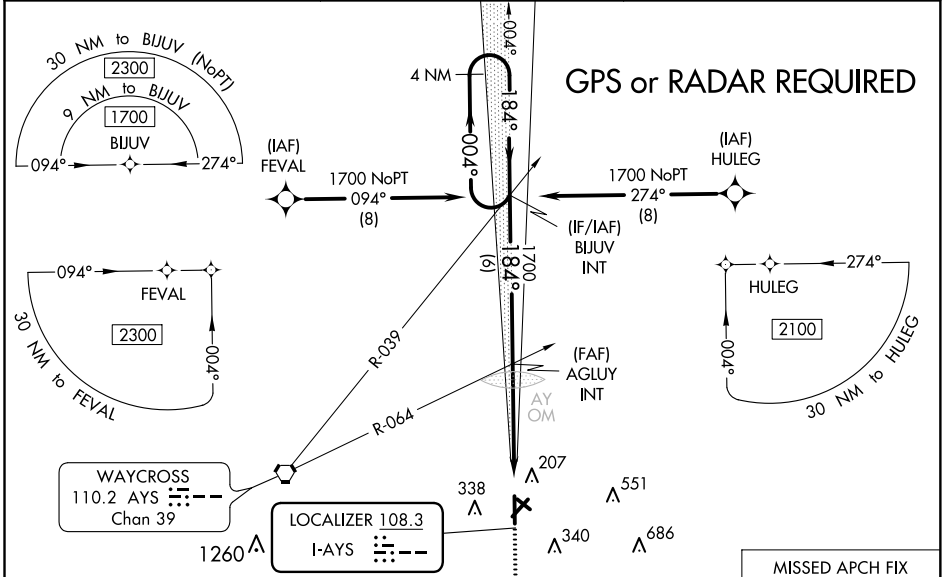
WAYCROSS-WARE COUNTY (A YS)

GPS required. When local altimeter setting not received, use Alma altimeter setting; increase DA to 390 feet and all MDA 60 feet; increase S-LOC 19 Cat C/D visibility 1/8 mile; increase Circling Cat C/D visibility 1/4 mile. For inop MALSR when using Alma altimeter setting, increase S-LOC 19 Cat C/D visibility to 1 1/8 mile. Night landing Rwy 5, 31 NA.

MALS
 MALSR

MISSED APPROACH:
Climb to 1800 direct BAQAV and hold.

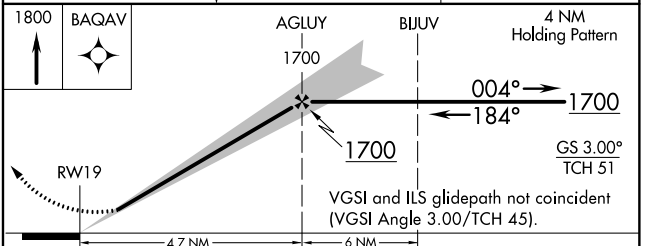
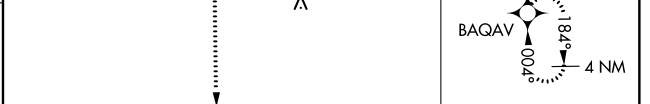
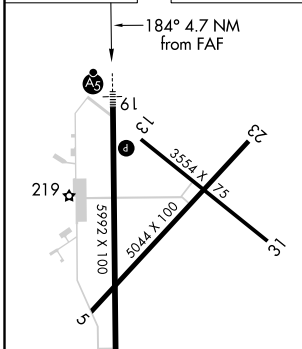
AWOS-3 118.575	JACKSONVILLE CENTER 127.575 269.025	UNICOM 122.8 (CTAF) ①
--------------------------	---	---------------------------------



SE-4, 27 JAN 2022 to 24 FEB 2022

SE-4, 27 JAN 2022 to 24 FEB 2022

ELEV 141	TDZE 140
-----------------	-----------------



CATEGORY	A	B	C	D
S-ILS 19	340-1/2		200 (200-1/2)	
S-LOC 19	600-1/2	460 (500-1/2)	600-7/8	460 (500-7/8)
C CIRCLING	660-1 519 (600-1)	720-1 579 (600-1)	860-2 719 (800-2)	860-2 1/4 719 (800-2 1/4)

WAYCROSS, GEORGIA
Orig 04FEB16

WAYCROSS-WARE COUNTY (A YS)
ILS Y or LOC Y RWY 19
31°15'N-82°24'W