


LOC I-AYS 108.3	APP CRS 184°	Rwy Idg TDZE Apt Elev	5992 140 141
---------------------------	------------------------	-----------------------------	---

ILS Z or LOC Z RWY 19

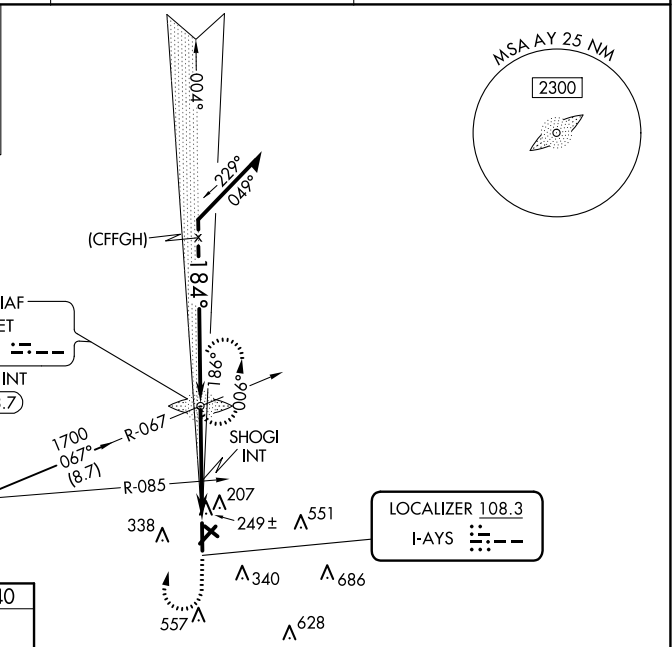
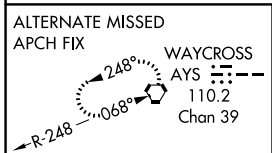
WAYCROSS-WARE COUNTY (A Y S)

ADF Required. When local altimeter setting not received, use Alma altimeter setting: increase DA to 390 feet and all MDA 60 feet; increase S-LOC 19 Cat C/D visibility 1/8 mile; increase Circling Cat C/D visibility 1/4 mile. For inop MALSRS, increase S-LOC 19 Cat C/D visibility to 1 mile. For inop MALSRS when using Alma altimeter setting, increase S-LOC 19 Cat C/D visibility to 1 1/8 mile. Increase SHOGI Fix Minimums S-LOC 19 Cat C/D visibility to 1 1/8 mile. Night Landing Rwy 5, 31 NA.

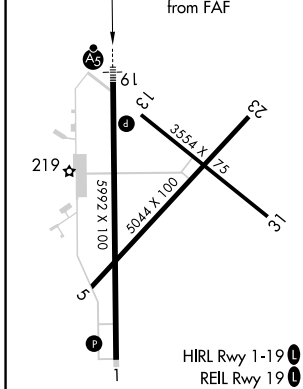
MALSRS 


MISSED APPROACH: Climb to 800 then climbing right turn to 1700 direct WIKET LOM and hold.

AWOS-3 118.575	JACKSONVILLE CENTER 127.575 269.025	UNICOM 122.8 (CTAF) 0
---------------------------------	--	--



ELEV 141	TDZE 140
-----------------	-----------------



800 1700 AY 

WIKET LOM/INT

Remain within 10 NM

VGSI and ILS glidepath not coincident (VGSI Angle 3.00/TCH 45).

SHOGI INT

1529

004° 1700 184° 1700

*LOC only. *600 *660 when using Alma altimeter setting.

1.5 NM 2.7 NM

GS 3.00° TCH 51

CATEGORY	A	B	C	D
S-ILS 19	340-1/2 200 (200-1/2)			
S-LOC 19	600-1/2	460 (500-1/2)	600-7/8	460 (500-7/8)
CIRCLING	660-1 519 (600-1)	720-1 579 (600-1)	860-2 719 (800-2)	860-2 1/4 719 (800-2 1/4)
SHOGI FIX MINIMUMS (DUAL VOR RECEIVERS REQUIRED)				
S-LOC 19	500-1/2	360 (400-1/2)	500-3/8	360 (400-3/8)
CIRCLING	660-1 519 (600-1)	720-1 579 (600-1)	860-2 719 (800-2)	860-2 1/4 719 (800-2 1/4)

FAF to MAP 4.2 NM

Knots	60	90	120	150	180
Min:Sec	4:12	2:48	2:06	1:41	1:24

SE-4, 27 JAN 2022 to 24 FEB 2022

SE-4, 27 JAN 2022 to 24 FEB 2022