

| | | | |
|--|------------------------|-----------------------------|---|
| WAAS CH 45509 W19A | APP CRS 184° | Rwy Idg TDZE Apt Elev | 5992 140 141 |
|--|------------------------|-----------------------------|---|

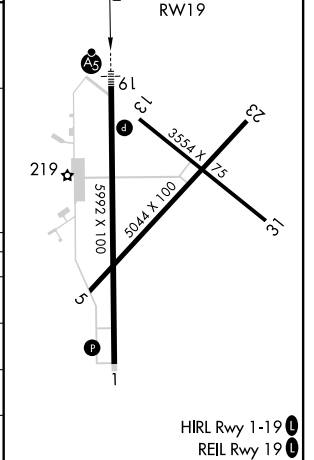
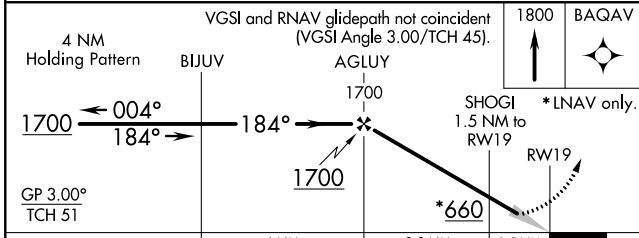
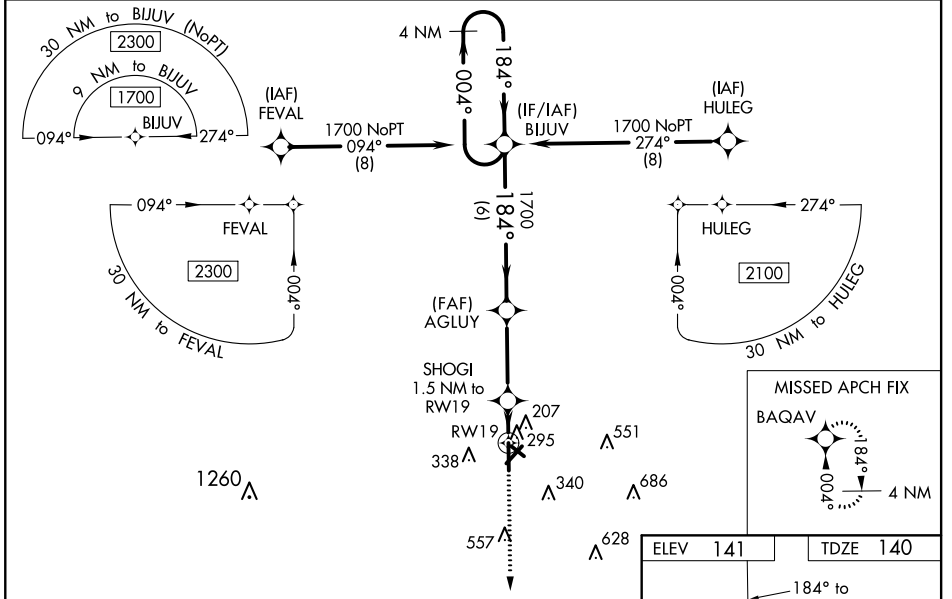
RNAV (GPS) RWY 19

WAYCROSS-WARE COUNTY (A.Y.S)

⚠ DME/DME RNP-0.3 NA. Baro-VNAV NA when using Alma altimeter setting. When local altimeter setting not received, use Alma altimeter setting: increase LPV DA to 390 feet and LNAV/VNAV DA to 600 feet and all MDA 60 feet; increase LNAV/VNAV visibility all Cats and LNAV Cat C/D visibility ¼ mile; increase Circling Cat C/D visibility ¼ mile. For inop MALSRL, increase LNAV Cat C/D visibility to 1 ½ mile. For inop MALSRL when using Alma altimeter setting increase LNAV/VNAV visibility all Cats to 1 ½ mile, and LNAV Cat C/D visibility to 1 ½ mile. For uncompensated Baro-VNAV systems, LNAV/VNAV NA below -15°C (5°F) or above 54°C (130°F). Night landing Rwy 5, 31 NA.

MALSRL MISSED APPROACH: Climb to 1800 direct BAQAV and hold.

| | | |
|--------------------------|---|---------------------------------|
| AWOS-3 118.575 | JACKSONVILLE CENTER 127.575 269.025 | UNICOM 122.8 (CTAF) 1 |
|--------------------------|---|---------------------------------|



| CATEGORY | A | B | C | D |
|-------------------|----------------------|----------------------|----------------------|------------------------------|
| LPV DA | | 340-1/2 | 200 (200-1/2) | |
| LNAV/VNAV DA | | 550-7/8 | 410 (500-7/8) | |
| LNAV MDA | 560-1/2 | 420 (500-1/2) | 560-3/4 | 420 (500-3/4) |
| C CIRCLING | 660-1 519 (600-1) | 720-1 579 (600-1) | 860-2 719 (800-2) | 860-2 1/4 719 (800-2 1/4) |

SE-4, 27 JAN 2022 to 24 FEB 2022

SE-4, 27 JAN 2022 to 24 FEB 2022